

# ACTIVE TRAVEL AND JUNCTION CAPACITY IMPROVEMENT SCHEME

## EAST LANCASHIRE ROAD AND MOORGATE ROAD



### WEEKEND CLOSURE ON MOORGATE ROAD SOUTH AND EVENING CLOSURES FOR RESURFACING WORKS

Works at the Moorgate Road and East Lancashire Road junction are progressing as scheduled. Following our previous correspondence, we would like to inform you of upcoming weekend daytime closures and multiple evening closures to undertake resurfacing. This will be undertaken in two parts:

#### PART ONE:

To facilitate essential works required for the additional lane on Moorgate Road South, we will be closing this road going Northbound towards the junction from the M57 roundabout. This closure is shown in below along with the associated diversion route, refer to - **PART ONE – WEEKEND DAYTIME CLOSURE**.

The works are scheduled to take place during the day of **Saturday & Sunday 5<sup>th</sup>/6<sup>th</sup> July and 12<sup>th</sup>/13<sup>th</sup> July**, the works will be undertaken between the hours of **7:00 AM and 4:00 PM**, once the work has been completed on that day the road will then be re-opened.

During this time, a signed diversion will be in place, as shown in diversion plan below

#### PART TWO:

To make use of the summer months, we are bringing forward elements of our carriageway resurfacing, the works were programmed for November but we are undertaking the works earlier than planned to make use of the good weather, during this time there will be multiple closures in place, this closure is shown in below along with the associated diversion route, refer to - **PART TWO – CARRIWAY RESURFACING NIGHTTIME CLOSURE – PHASE A,B,C,D,E & F**

The closures will be undertaken between the hours of **7:00 PM and 5:00 AM**, please see below for more Information

We appreciate your patience while we carry out these improvements and apologise for any inconvenience.

For more information on this and future phases please visit [www.knowsley.gov.uk/M57](http://www.knowsley.gov.uk/M57)

To report any problems with the traffic management please contact

0800 0232334

#### URBAN 64 INSTALLATION

We will be installing Urban 64 Traffic Signal equipment under lane closures from 21<sup>st</sup> July – 23<sup>rd</sup> July – This will be in operation for two weeks whilst we undertake the final upgrades to the signals.

**WHAT IS URBAN 64** - Urban64 is an intelligent temporary traffic management system that replicates how permanent traffic signal function, by installing these, It allows for the safe and efficient flow of vehicles, cyclists, and pedestrians when the permanent signals are turned off temporarily while we do improvement works.

Disclaimer

Knowsley Metropolitan Borough Council (KMBC) has reviewed the traffic management and construction phasing arrangements. The durations outlined in this construction update and subsequent iterations are subject to change.

Funded by  
UK Government



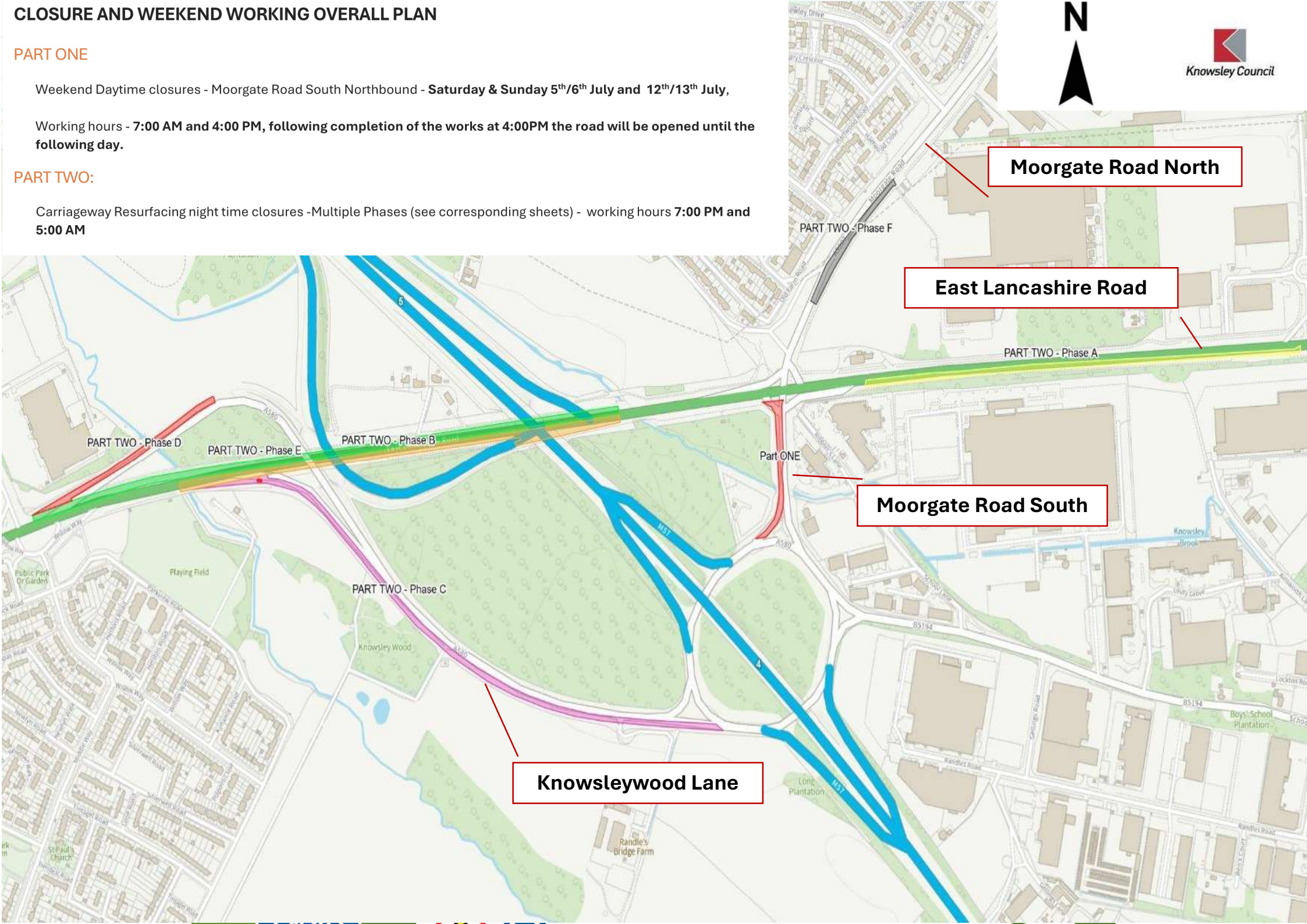
CLOSURE AND WEEKEND WORKING OVERALL PLAN

PART ONE

Weekend Daytime closures - Moorgate Road South Northbound - **Saturday & Sunday 5<sup>th</sup>/6<sup>th</sup> July and 12<sup>th</sup>/13<sup>th</sup> July**,  
Working hours - **7:00 AM and 4:00 PM**, following completion of the works at 4:00PM the road will be opened until the following day.

PART TWO:

Carriageway Resurfacing night time closures -Multiple Phases (see corresponding sheets) - working hours **7:00 PM and 5:00 AM**





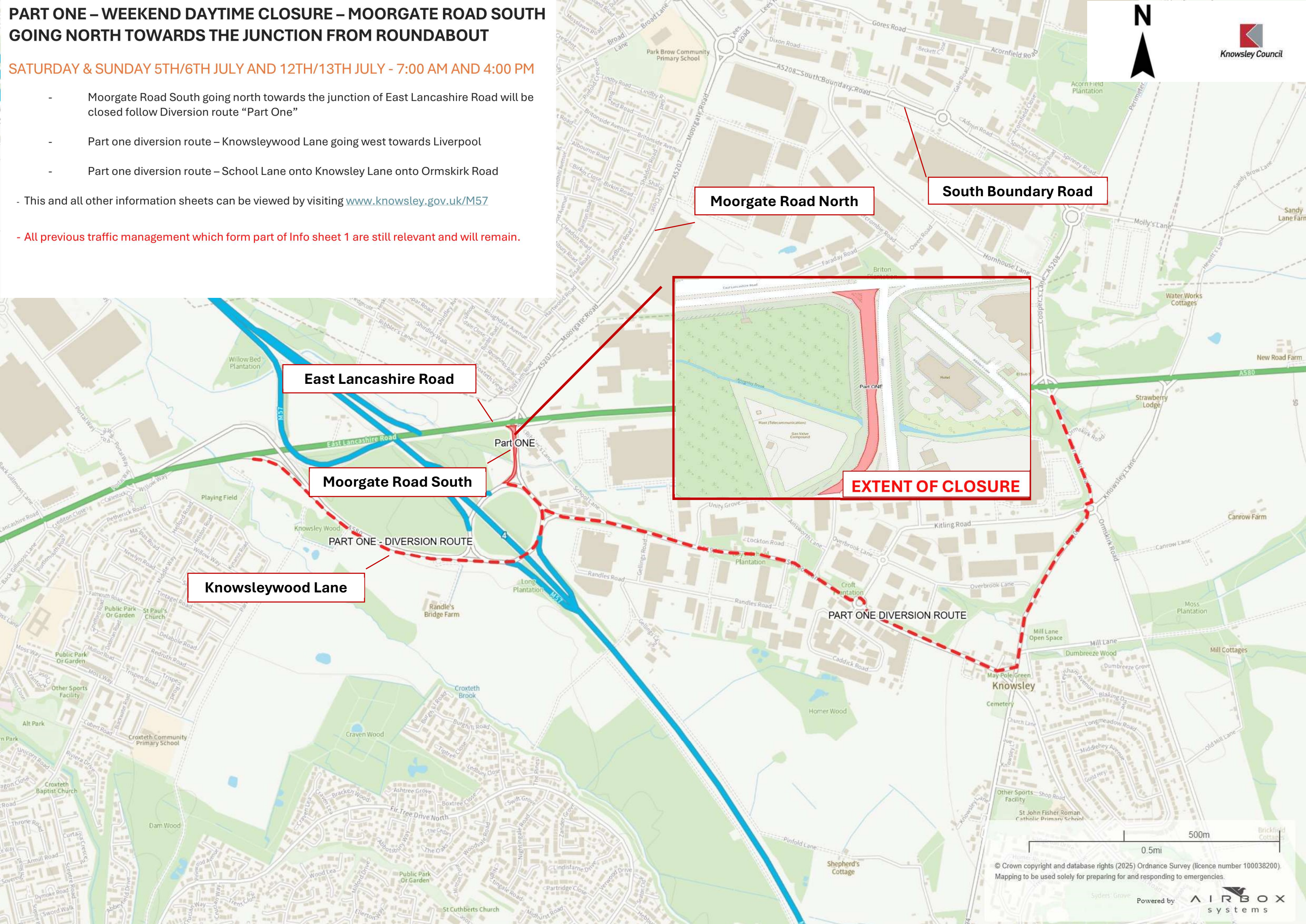
# PART ONE – WEEKEND DAYTIME CLOSURE – MOORGATE ROAD SOUTH GOING NORTH TOWARDS THE JUNCTION FROM ROUNDABOUT

SATURDAY & SUNDAY 5TH/6TH JULY AND 12TH/13TH JULY - 7:00 AM AND 4:00 PM

- Moorgate Road South going north towards the junction of East Lancashire Road will be closed follow Diversion route “Part One”
- Part one diversion route – Knowsleywood Lane going west towards Liverpool
- Part one diversion route – School Lane onto Knowsley Lane onto Ormskirk Road

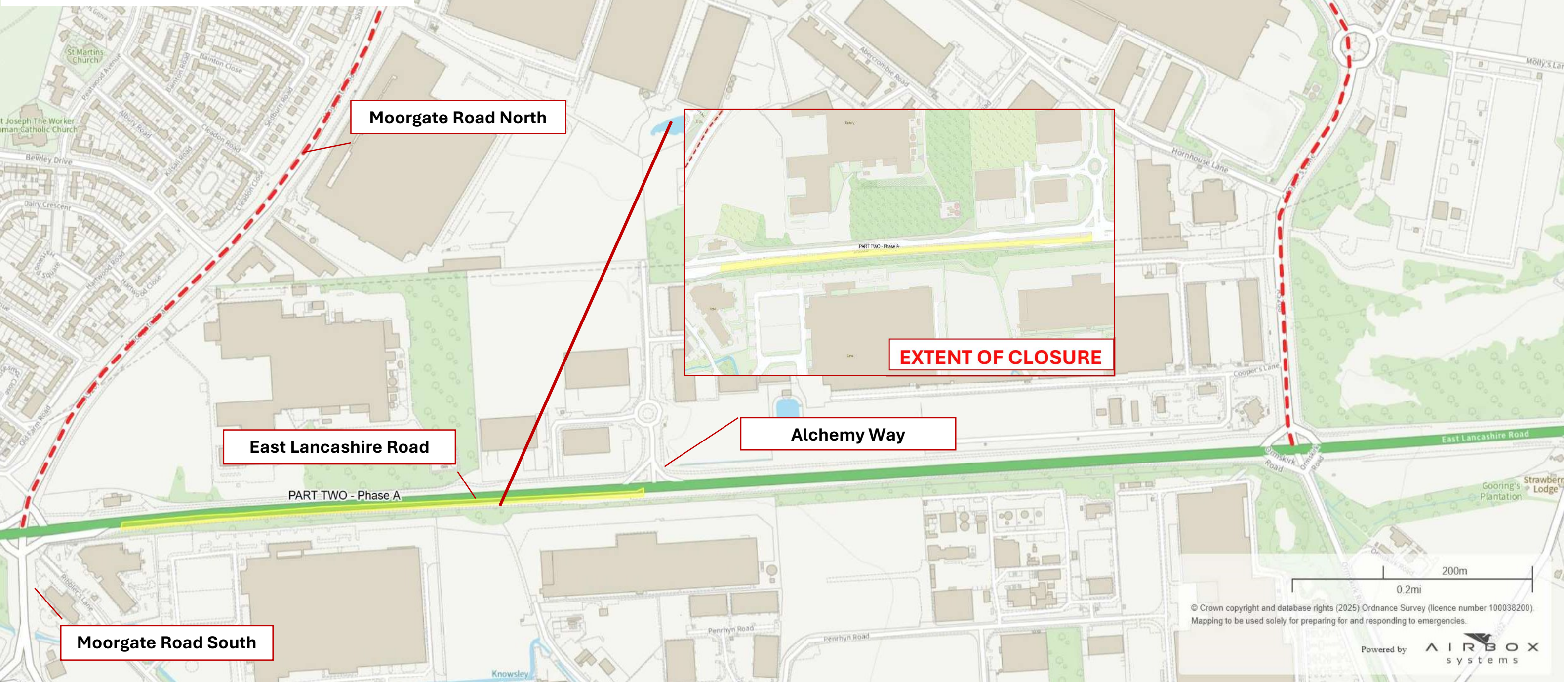
- This and all other information sheets can be viewed by visiting [www.knowsley.gov.uk/M57](http://www.knowsley.gov.uk/M57)

- All previous traffic management which form part of Info sheet 1 are still relevant and will remain.





All previous traffic management which form part of Info sheet 1





## PART TWO – CARRIAGEWAY RESURFACING NIGHTTIME CLOSURE – PHASE B:

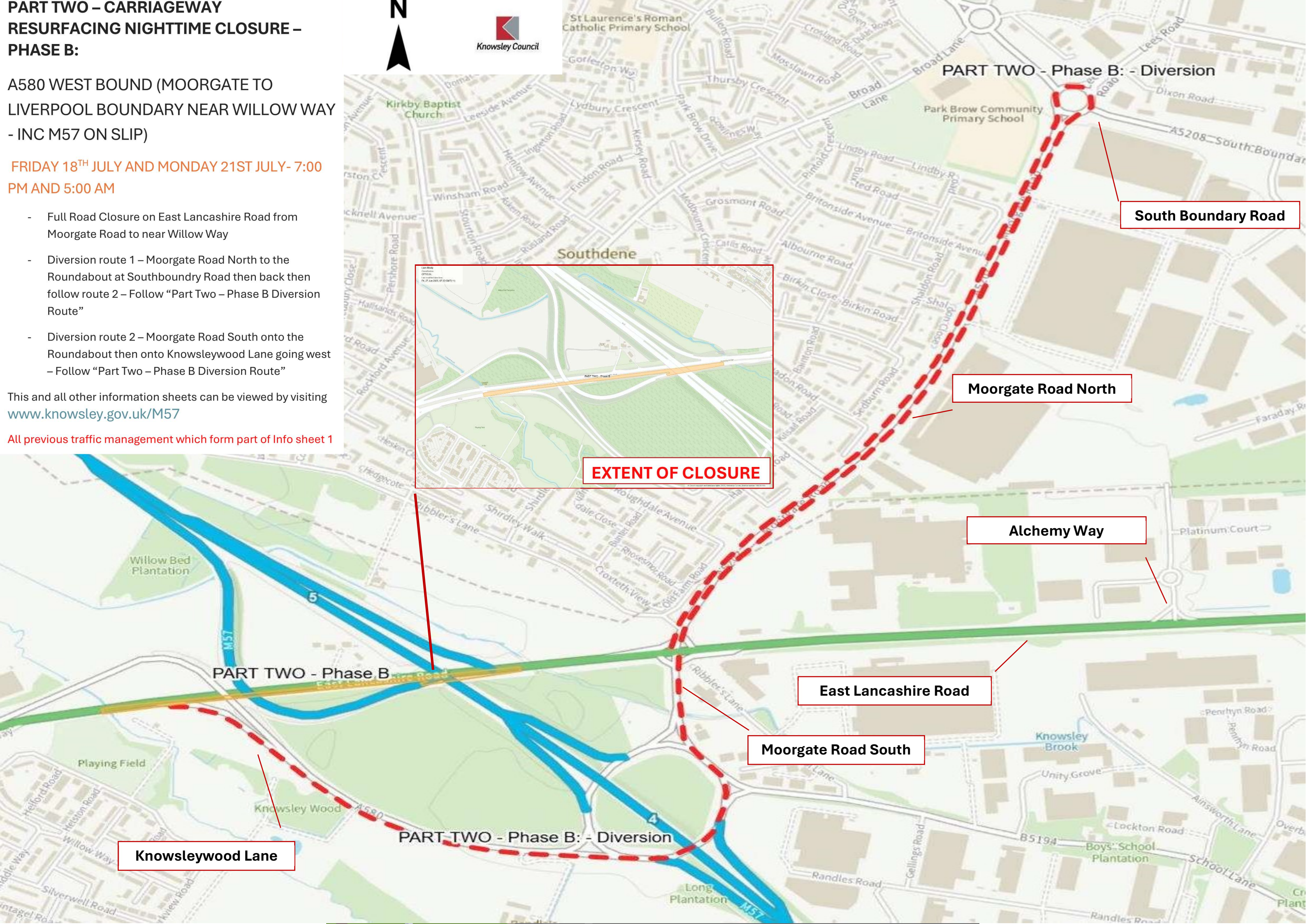
A580 WEST BOUND (MOORGATE TO  
LIVERPOOL BOUNDARY NEAR WILLOW WAY  
- INC M57 ON SLIP)

FRIDAY 18<sup>TH</sup> JULY AND MONDAY 21<sup>ST</sup> JULY- 7:00  
PM AND 5:00 AM

- Full Road Closure on East Lancashire Road from Moorgate Road to near Willow Way
- Diversion route 1 – Moorgate Road North to the Roundabout at Southboundry Road then back then follow route 2 – Follow “Part Two – Phase B Diversion Route”
- Diversion route 2 – Moorgate Road South onto the Roundabout then onto Knowsleywood Lane going west – Follow “Part Two – Phase B Diversion Route”

This and all other information sheets can be viewed by visiting  
[www.knowsley.gov.uk/M57](http://www.knowsley.gov.uk/M57)

All previous traffic management which form part of Info sheet 1





**PART TWO – CARRIAGEWAY  
RESURFACING EVENING CLOSURE –  
PHASE C:**

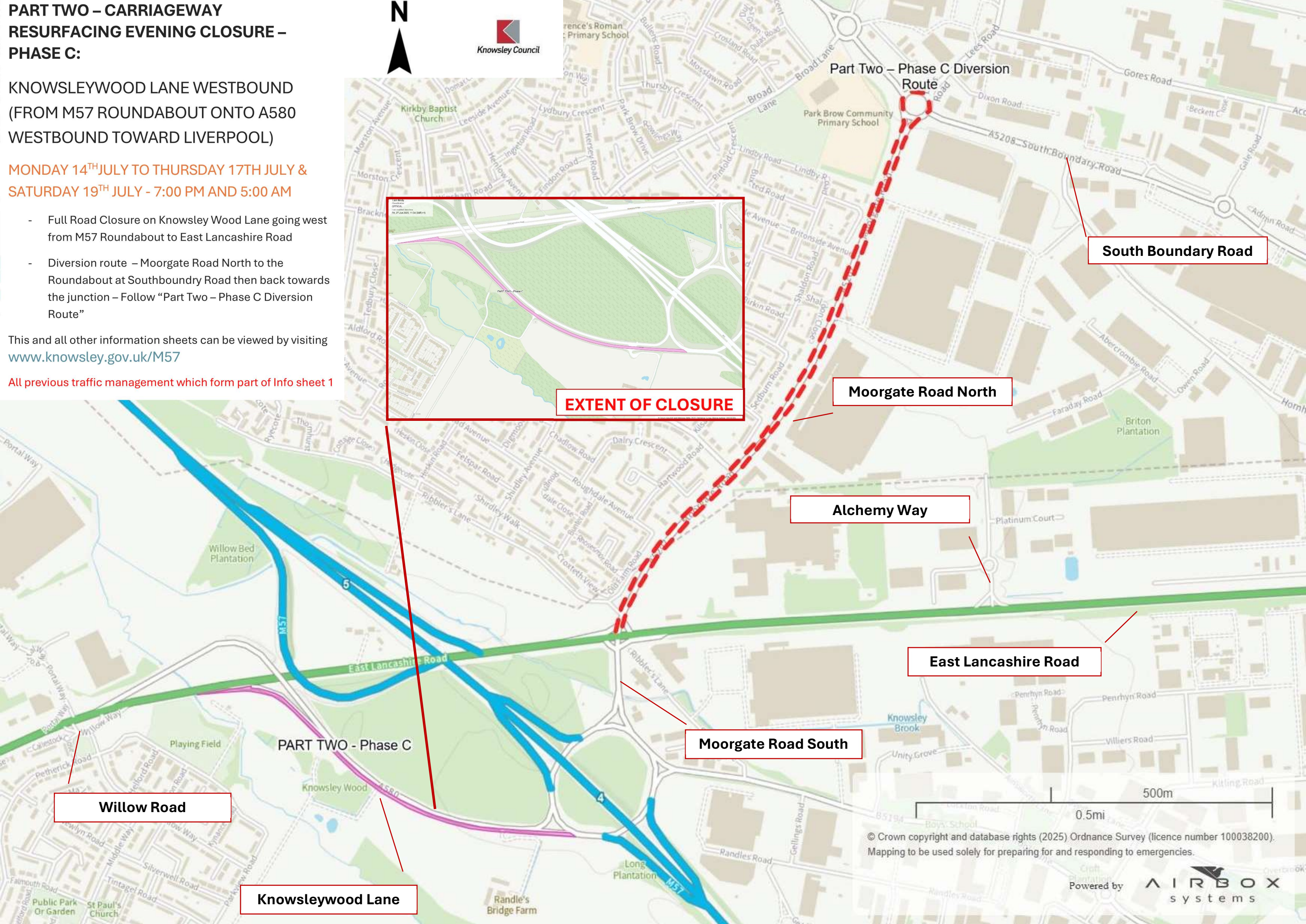
**KNOWSLEYWOOD LANE WESTBOUND  
(FROM M57 ROUNDABOUT ONTO A580  
WESTBOUND TOWARD LIVERPOOL)**

**MONDAY 14<sup>TH</sup> JULY TO THURSDAY 17<sup>TH</sup> JULY &  
SATURDAY 19<sup>TH</sup> JULY - 7:00 PM AND 5:00 AM**

- Full Road Closure on Knowsley Wood Lane going west from M57 Roundabout to East Lancashire Road
- Diversion route – Moorgate Road North to the Roundabout at Southboundry Road then back towards the junction – Follow “Part Two – Phase C Diversion Route”

This and all other information sheets can be viewed by visiting [www.knowsley.gov.uk/M57](http://www.knowsley.gov.uk/M57)

All previous traffic management which form part of Info sheet 1





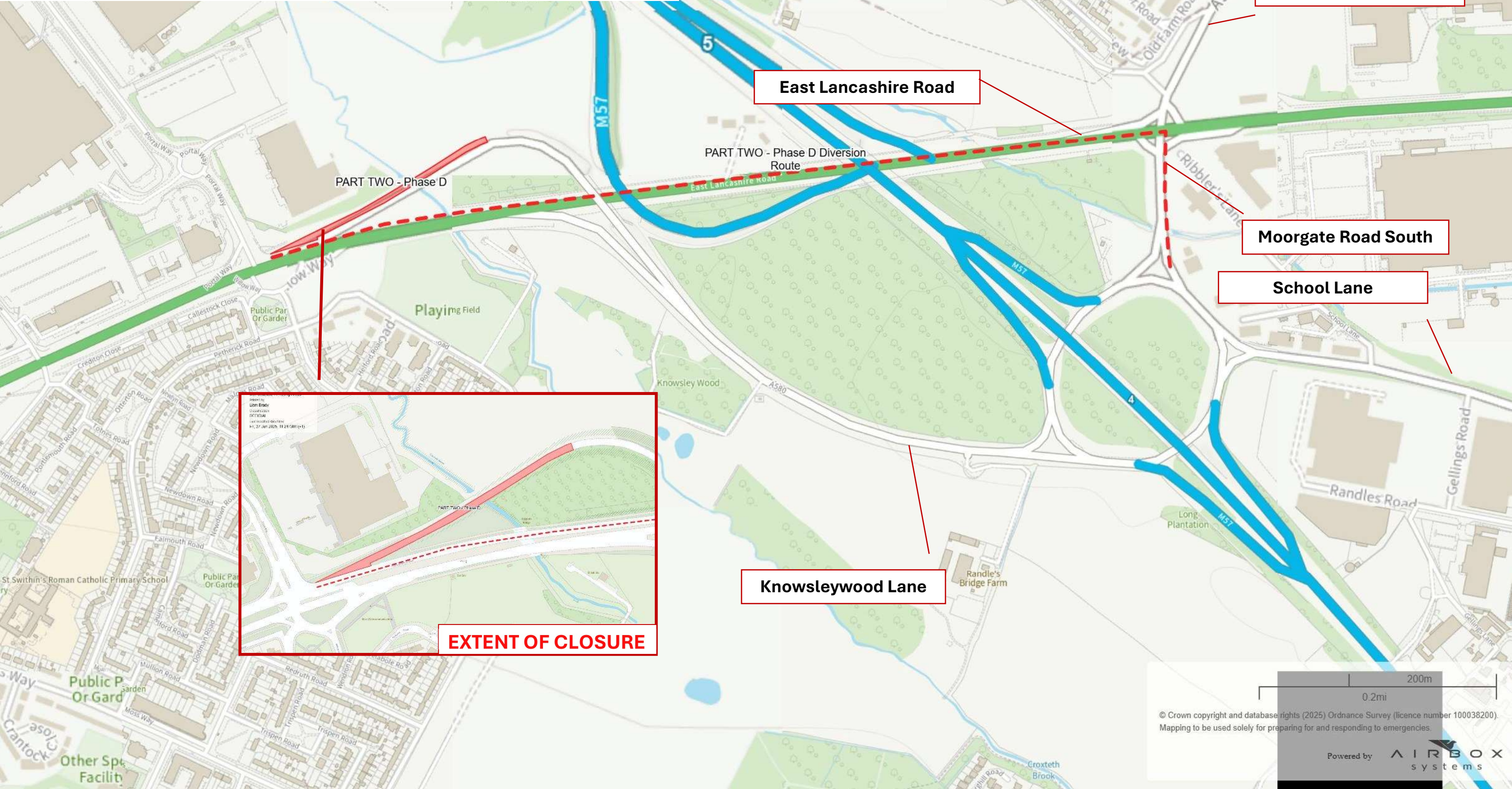
PART TWO – CARRIAGEWAY RESURFACING EVENING CLOSURE – PHASE D:

KNOWSLEY WOOD LANE EASTBOUND (OFF SLIP FROM LIVERPOOL BOUNDARY TO M57 ROUNDABOUT)

MONDAY 28TH - 7:00 PM AND 5:00 AM

- Full Road Closure on Knowsley wood Lane going west from East Lancashire Road to M57 Roundabout
- Full Road Closure on Knowsley Wood Lane going west from East Lancashire Road to M57 Roundabout
- Diversion route – Follow East Lancashire Road then onto Moorgate Road South - Follow “Part Two – Phase D Diversion Route”

This and all other information sheets can be viewed by visiting [www.knowsley.gov.uk/M57](http://www.knowsley.gov.uk/M57)





**PART TWO – CARRIAGEWAY RESURFACING EVENING CLOSURE – PHASE E:**

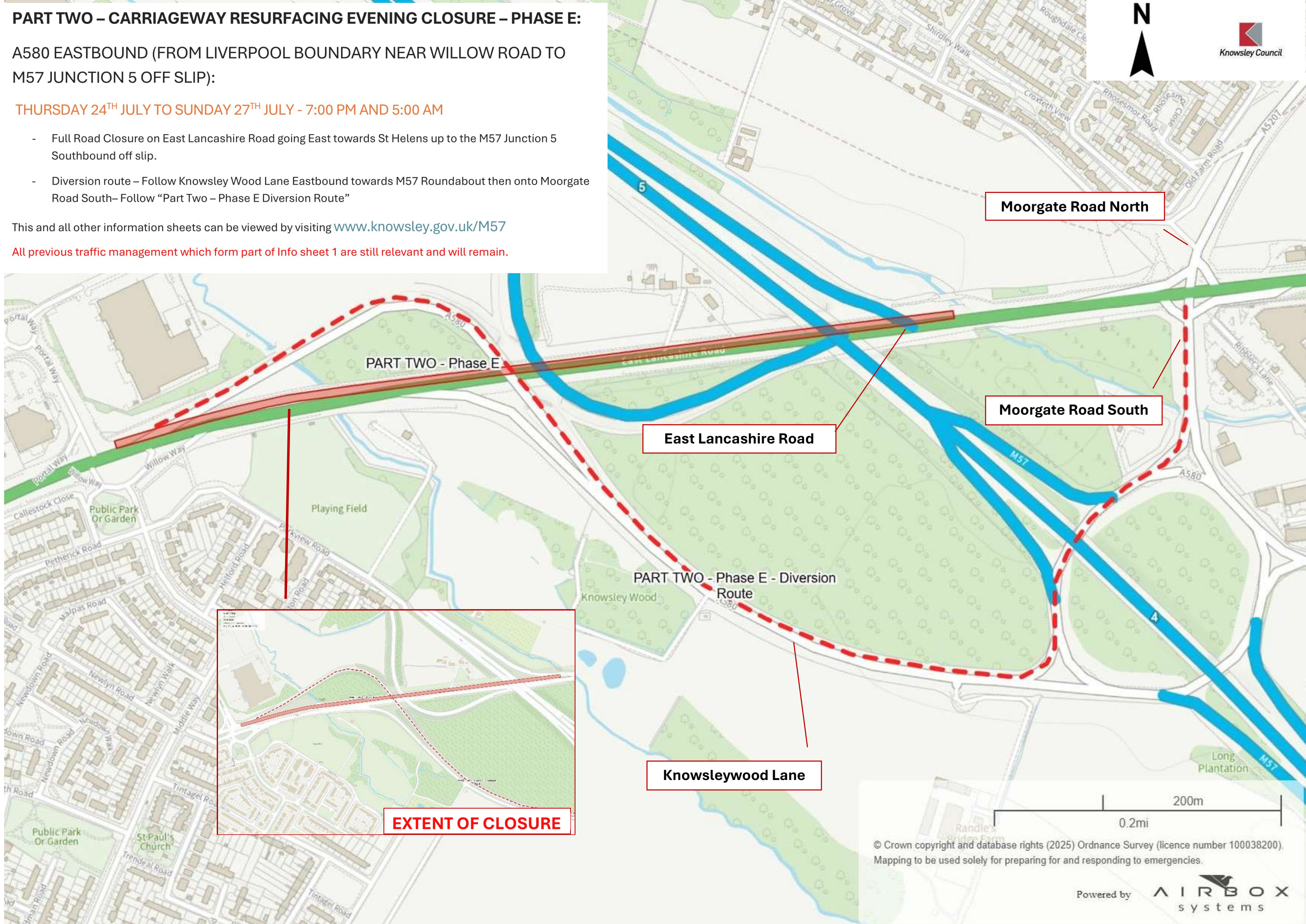
A580 EASTBOUND (FROM LIVERPOOL BOUNDARY NEAR WILLOW ROAD TO M57 JUNCTION 5 OFF SLIP):

THURSDAY 24<sup>TH</sup> JULY TO SUNDAY 27<sup>TH</sup> JULY - 7:00 PM AND 5:00 AM

- Full Road Closure on East Lancashire Road going East towards St Helens up to the M57 Junction 5 Southbound off slip.
- Diversion route – Follow Knowsley Wood Lane Eastbound towards M57 Roundabout then onto Moorgate Road South– Follow “Part Two – Phase E Diversion Route”

This and all other information sheets can be viewed by visiting [www.knowsley.gov.uk/M57](http://www.knowsley.gov.uk/M57)

All previous traffic management which form part of Info sheet 1 are still relevant and will remain.





## **PART TWO – CARRIAGEWAY RESURFACING EVENING CLOSURE – PHASE F:**

MOORGATE ROAD NORTH GOING SOUTH  
(FROM PAST SAPUTO ENTRANCE TO A580  
JUNCTION)

TUESDAY 22ND AND WEDNESDAY 23RD JULY -  
7:00 PM AND 5:00 AM

- Full Road Closure on Moorgate Road North going South from past the entrance to Saputo towards the junction
- Diversion route – Moorgate Road North towards Southboundary Road then onto Coopers Lane – Follow “Part Two – Phase F Diversion Route”

This and all other information sheets can be viewed by visiting [www.knowsley.gov.uk/M57](http://www.knowsley.gov.uk/M57)

All previous traffic management which form part of Info sheet 1

