

2030 Delivery Plan – updated people based outcomes 2023



Priority 1: Where strong & safe communities can shape their future

Focus	Delivery	Key Objective	Headline Action	Summary	Partnership/ Organisation	Lead Officer/ Organisation	Timescale
Partnership	Strategic	Culture strategy local identity	Culture & Creativity Strategy	A Boroughwide Strategy as part of the legacy from Borough of Culture. The organisation Counterculture has been working on the Knowsley Cultural Strategy and Delivery Plan since Autumn 2022 and has undertaken a range of consultations in that time. The final document will be a creative seven year cultural strategy and delivery plan informed and shaped by key stakeholders, artists and communities from Knowsley.	KMBC - C&N	Andrew Donaldson (KMBC)	2023/24 – launch in January 2024

Internal	Operational	Strong community	Community Asset Transfers	Implementation plan and identify further feasible opportunities	KMBC - C&N	Caroline Holmes (KMBC)	2023
Internal	Strategic	Culture strategy local identity	Public Art Strategy	Develop and deliver, linked to regeneration	KMBC - C&N	Denise Best (KMBC)	2023-25
Partnership	Strategic	Multi-agency - tackle crime	Knowsley Domestic Abuse Strategy 2022-25	Priorities: workforce development, victim focus, effective intervention, early intervention and prevention, accommodation support, perpetrator support and challenge, workplace policies, social and community awareness	Partnership - Community Safety Partnership	Ian Willman (KMBC)	2022-25
Partnership	Strategic	Strong community	Knowsley Offer co-produced with all partners and community and behaviour change	To include: (i) partners offer to the community (inc consultation with community); (ii) partner offer to businesses; (iii) community offer - what they will do (inc engagement with community); (iv) business offer - what they will do; (v) longer term engagement to encourage behaviour change on specific 2030 priorities/ sticky issues	Partnership - KMBC/ all	James Duncan/ Andrew Donaldson (KMBC)	Ongoing
External	Strategic	Strong community	Court Hey development	Support better development, liaison, representation and working in partnership with	Partnership - One Knowsley	Racheal Jones (One Knowsley)	Ongoing

				VCFSE sector and across sectors			
External	Strategic	Strong community	LCR BAME Equalities	Driving conditions for growth for BAME communities	Partnership - One Knowsley	Racheal Jones (One Knowsley)	Ongoing
External	Strategic	Strong community	Social Impact Programmes	Social impact programmes delivered directly by Livv and in partnership with KMBC as part of the Hardship Fund. Including a focus on mental health and wellbeing programmes and younger people	Livv	Amanda Newton (Livv)	Ongoing
Partnership	Strategic	Knowsley is and feels safe	Harm to Hope Strategy	10-year drugs plan to cut crime and save lives	Merseyside Police/KMBC	Andrew Donaldson (KMBC)	2022-30
External	Operational	Knowsley is and feels safe	Operation Stonehaven	Key element of Project Medusa identifying preventative community based collaborative projects which promote diversionary interventions and supporting victims, families and those at risk from exploitation and/ or work with local communities and partners to raise awareness of county lines, increase intelligence sharing and reduce opportunities for criminality	Merseyside Police	Supt Phil Mullally (Merpol)	2023

External	Operational	Knowsley is and feels safe	Operation Target	Force response to reducing serious violence - Knowsley contributes to activity across a 4P plan with a real focus on those u25 involved in serious violence / knife crime or those u25 most at risk of becoming a victim of serious violence	Merseyside Police	Supt Phil Mullally (Merpol)	2023
External	Strategic	Knowsley is and feels safe	Violence Reduction Unit (VRU)/ Violence Reduction Partnership (VRP) continuing work	Look at early intervention and whole families approach to reducing serious violence. Working with the Peer Action Collective to ensure young people feedback into the VRP and the development of our programmes	Partnership - Merseyside Police with Violence Reduction Partnership/ Community Safety	C/Supt Andy Ryan (Merpol)	2023
External	Operational	Multi-agency - tackle crime	Policing - preventative approach across all areas of business	Give the community a voice on key issues relating to policing approaches, crime and vulnerability through advisory groups and scrutiny panels. Work in partnership to prevent offending and reduce re-offending	Merseyside Police	C/Supt Andy Ryan (Merpol)	Ongoing
Partnership	Operational	Multi-agency - tackle crime	Project ADDER - managing drug misuse	Effective treatment, with enhanced treatment and recovery provision. Working alongside KMBC and other stakeholders within the borough to ensure a collaborative approach to	Partnership - Merseyside Police with KMBC and other partners	Supt Phil Mullally (Merpol)	2024

				prevention linked to drug misuse			
External	Operational	Knowsley is and feels safe	Project Medusa - County Lines	Focused on those involved in the movement and supply of drugs - aims to dismantle the business model of County Lines that often sees young people exploited and trafficked to deal drugs. Working alongside colleagues in Protecting Vulnerable People Unit (PVP) to identify police interventions visible and covert) including deployment County Lines Taskforce to bring perpetrators to justice and safeguard vulnerable people.	Merseyside Police	Supt Phil Mullally (Merpol)	2023
External	Operational	Multi-agency - tackle crime	Protecting Vulnerable People (PVP) Operations and Investigations	Criminal Exploitation/ Serious Organised Crime (SOC) operations - ongoing and planned including joint working. Modern day slavery (MDS) investigations implemented to identify those targeting vulnerable youths. Seeking funding re: diversionary opportunities for those in MACE/identified at high-risk CE/Child Sex Exploitation (CSE). Pan Merseyside Multi-Agency	Merseyside Police	DCI Paul Grounds (Merpol)	2023

				Response to Threat, Harm and Risk) MARTHR being developed to tackle CE Perpetrators and locations/businesses of concern			
External	Operational	Multi-agency - tackle crime	Reinvestment of Proceeds of Crime Act (POCA) seized assets	To run schemes including Community Cashback and Participatory Budget Events which enable grass roots groups and organisations to provide diversionary activities and services that help prevent crime, ASB and vulnerability	Merseyside Police	Mike Berry, Office of the Police and Crime Commissioner (Merpol)	2023
External	Strategic	Knowsley is and feels safe	Serious violence funding through Home Office "GRIP"	Funding to implement a problem oriented approach to reduce Serious Violence in communities / open spaces through an objective, scanning, analysis, response and assessment (OSARA) methodology	Merseyside Police	Supt Phil Mullally (Merpol)	2023
External	Strategic	Knowsley is and feels safe	Home Safety Strategy	To reduce the risk of fire in the home, Merseyside Fire & Rescue Service target the most vulnerable people within the community. The Home Fire Safety Check is targeted at households in deprived areas where the resident is known to be over 65 and offers advice and free smoke alarms to assist them. For	MFRA	John Fielding (MFRA)	Ongoing

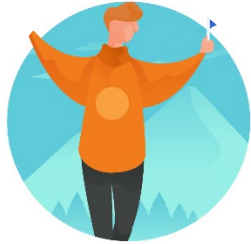
				more vulnerable people, the Safe and Well visit is a far more in depth visit from our advocate team who not only assess the risk of fire but enable pathways for people to live better lives, smoking cessation advice and referrals for example			
Partnership	Strategic	Knowsley is and feels safe	Community Safety Plan - Domestic abuse/VAWG agenda	The Knowsley Community Safety Partnership Executive are undertaking a review of the Community Safety Strategy 2023-25 and this is being supported by the Council's Policy and Performance team. The reason for the review is to ensure that the strategy is current and reflects national policy and the current priorities for Knowsley	Partnership - Community Safety Partnership	Ian Willman (KMBC)	2023-25
Partnership	Strategic	Knowsley is and feels safe	Community Safety Plan - Serious and organised crime/serious violence	Aim: to support victims of crime and their children, as well as tackling those who perpetrate crime.	Partnership - Community Safety Partnership	Ian Willman (KMBC)	Ongoing with annual refresh
Partnership	Strategic	Knowsley is and feels safe	Community Safety Plan - ASB	Aim: to support victims of crime and their children, as well as tackling those who perpetrate crime.	Partnership - Community Safety Partnership	Ian Willman (KMBC)	Ongoing with annual refresh

Internal	Operational	Strong community	Green space development programme	Includes Bowring, Court Hey Park, KGV Huyton site, Headbolt Lane, Halsnead garden Village	KMBC - C&N	Caroline Holmes (KMBC)	2023
Partnership	Operational	Knowsley is and feels safe	Domestic Violence capacity building for VCSFE	Upskilling and capacity building for sector	Partnership - One Knowsley	Paula Kearns (One Knowsley)	2023
Partnership	Operational	Culture strategy local identity	Heritage Fund microgrants - 2 year programme	Capacity building VCFSE to extend reach of heritage into communities through microgrant programme	Partnership - One Knowsley	Liz Mann (One Knowsley)	2023
Partnership	Operational	Strong community	Volunteering Digital Platform	Volunteers are able to search for opportunities that fit with the hours they have available and pick the kinds of opportunities they require.	Partnership - One Knowsley	Racheal Jones (One Knowsley)	Ongoing
External	Operational	Knowsley is and feels safe	Operation Rain	Merseyside Police operation to pursue, prevent, protect and prepare against three identified threat streams within Knowsley 1. Serious Organised Crime, County Lines and Criminal Exploitation in the Westvale Area of Kirkby 2. Criminal Exploitation, ASB and vulnerability within the Prescott Area 3. Seasonal summer violence trends during the summer	Merseyside Police	Supt Karl Baldwin (Merpol)	2023

External	Operational	Multi-agency - tackle crime	Operation Bollard and Operation Snow	Collaborative approach between Merseyside Police and KMBC, through the SHIELD Team, to Child Criminal Exploitation within Kirkby and Prescott	Merseyside Police & KMBC	D/Inspector Alyson Keenan (Merpol)	2023
Partnership	Operational	Strong community	Support capacity building of the voluntary sector	Knowsley Community College - One Knowsley. Bitesize and flexible learning opportunities	Knowsley Community College	Simon Pierce/Mark Doyle (StH&KCC)	2023
Partnership	Strategic	Strong community	Waste Transformation Plan 2023-25	Knowsley's Cabinet have approved and signed up to the City Region Zero Waste Framework. The Framework will be supported by a City Region Waste Strategy.	KMBC	Denise Best (KMBC)	2023-25
External	Strategic	Knowsley is and feels safe	Violence Reduction Partnership	Funding extended for 3 years	Merseyside Police	D/Supt Siobhan Gainer (Merpol)	2025
Partnership	Strategic	Strong community	Stronger Communities Delivery Plan	Stronger Communities Steering Group established to support accessibility and promotion of community activity. Group also oversees delivery of the Stronger Communities Delivery Plan	KMBC/Partnership/One Knowsley	Caroline Holmes (KMBC)	Ongoing

External	Strategic	Knowsley is and feels safe	Domestic Abuse intensification period	Nov - Dec 21 - intensification period focussing on events/briefings around DA, coercive and controlling behaviour, criminal exploitation and MACE (including evidence gathering/ recording)	Merseyside Police	DCI Paul Grounds (Merpol)	Complete
External	Operational	Multi-agency - tackle crime	Serious and Organised Crime Local Policing (SOCLP) - team and meeting	Knowsley LP Community Team have refreshed and reinstated the monthly SOC meeting	Merseyside Police	Supt Karl Baldwin (Merpol)	Complete
Partnership	Strategic	Strong community	Stronger Communities model and strategy	Establish the Stronger Communities Steering Group to oversee the direction and delivery of the Stronger Communities delivery plan. The "Year One" delivery plan includes a focus on community sector capacity building, and behaviour change	Partnership - Stronger Communities Group	Andrew Donaldson (KMBC)	Complete

Partnership	Operational	Culture strategy local identity	Borough of Culture programme 2022	Deliver events programme, including community development & engagement programme throughout 2022. Ensuring that this creates a confidence and enthusiasm for residents, for culture and wider participation	Partnership - Borough of Culture Steering Group	Paula Williams (KMBC)	Complete
Internal	Operational	Multi-agency - tackle crime	Prevention Service	Children's - providing an early help offer to children at risk of ASB, crime and exploitation	KMBC - Children's	Jo Parry (KMBC)	Complete
Partnership	Strategic	Strong community	Youth Investment Fund	Youth Investment Fund for capital investment into facilities in support of Knowsley's Offer	Partnership - KMBC - C&N and Children's with One Knowsley and Merseyside Youth Association	Julie Moss (KMBC)	Complete



**Priority 2: Where people are active and healthy,
and have access to the support they need**

Focus	Delivery	Key Objective	Headline Action	Summary	Partnership/ Organisation	Lead Officer/ Organisation	Timescale
Internal	Strategic	People enabled to be active	Parks and Green Space Action Plan	Refreshed strategy linked to Offer and improving physical activity	KMBC - C&N	Caroline Holmes (KMBC)	2023
Internal	Strategic	People enabled to be active	Sports Development and Physical Activity Action Plan	Develop and implement - Boroughwide approach to supporting increased physical activity	KMBC - C&N	Andrew Donaldson (KMBC)	2025
Internal	Strategic	Focus on early intervention	Asset Based Approach	Strengthen systems and processes to enable people to take greater control over their care and support arrangements, including embedding an asset based approach which promotes prevention, independence and self-care	KMBC - HASC	Jenny Rollinson (KMBC)	Ongoing

Internal	Strategic	Access to personal services	Transformation of Adult Provider Services - Day Services	<p>Continue on-going transformation of provision including:</p> <p>Review the offer at each of the bases ensuring ongoing operational focus on delivery to the most complex service users;</p> <p>Ensure pathways into the service are effective and develop ability to manage demand and create further flexibility in the service offer;</p> <p>Determine best practice and where change/development is required;</p> <p>Link to ongoing work for quality improvement and best practice;</p> <p>Link to building assets analysis;</p> <p>Report on findings and recommendations for required changes</p>	KMBC - HASC	Jenny Rollinson (KMBC)	2023
Internal	Strategic	Access to personal services	Review of Respite Provision	<p>Review the current approach to/ model of respite and develop a plan that responds to the changing needs of service users and their carers for older adults, working age adults and young people transitioning from Children's Services</p>	KMBC - HASC	Jenny Rollinson (KMBC)	2023
Internal	Strategic	Most vulnerable supported	Embed an Assistive Technology first	<p>Ensure the Assistive Technology offer is and remains fit for purpose as the kit and associated service offers evolve, and ensure</p>	KMBC - HASC	Jenny Rollinson (KMBC)	Ongoing

			approach within Adult Social Care	an Assistive Technology first approach is embedded as part of embedding asset based approaches to assessment			
Internal	Strategic	Access to personal services	Behavioural Insight approach across Public Health	Develop interventions & re-orientate services to better meet the needs of residents	KMBC - HASC	Sarah McNulty (KMBC)	2023
Internal	Strategic	Access to personal services	Dementia Strategy	Develop a new Dementia Strategy for Knowsley with a SMART action plan and an associated performance dashboard to monitor activity and improved outcomes	KMBC - HASC	Jenny Rollinson (KMBC)	2023
Internal	Strategic	Access to personal services	Healthy Weight Strategy	Refresh of healthy weight strategy and updated action plan	KMBC - HASC	Sarah McNulty (KMBC)	2023
Internal	Strategic	Access to personal services	Intermediate Care	Develop an alternative and flexible delivery model to support avoidable admissions to hospital and to support timely hospital discharge and improved outcomes	KMBC - HASC	Jenny Rollinson (KMBC)	2024
Partnership	Strategic	Focus on early intervention	Best Start for Life and Family Hubs	Creation of a new programme of work designed to support early years. Significant part of this will be the development of Family Hubs model of services for the first 1001 days of life	Partnership - Best Start for Life Group (new) - KMBC, Wirral Community Health NHS Trust, maternity service partners	Julie Moss (KMBC)	2025

Partnership	Strategic	Most vulnerable supported	Health and Wellbeing Board priorities	Health and Wellbeing Strategy has two priorities - mental health and addressing inequalities. The HWB have selected the below topics as priority areas in addressing inequalities. Knowsley is also part of the Marmot Community work led by Cheshire & Merseyside: 1. Cost of living and hardship (to include winter preparedness) 2. Physical activity 3. Employment 4. Housing 5. Community safety 6. Best start to life 7. Mental health 8. Targeted, local approach in a specific ward	Partnership - Health and Wellbeing Board	Richard Holford (KMBC)	2023
Partnership	Strategic	Access to personal services	Carers Strategy	In partnership with ASC and partners- develop the action plan (Sept 21) and implement priorities for year one (from March 22)	Partnership - KMBC/ partners	Jenny Rollinson (KMBC)	2023
Partnership	Strategic	Most vulnerable supported	Health inequalities - reducing	Develop & implement a local systematic partnership approach to addressing Health Inequalities including local Marmot priorities, Prevention Concordat for Better Mental Health	Partnership - Knowsley Healthier Together Board	Alison Lee (ICS)	Ongoing

Partnership	Strategic	Transformation for better health and care outcomes	Mental Health Resilience VCFSE network	To enable joined up community interventions	Partnership - One Knowsley	Paula Kearns (One Knowsley)	Ongoing
Partnership	Strategic	Transformation for better health and care outcomes	Social Prescribing Strategy	Improving the quality of patient care and health outcomes and bringing core primary services together to enable greater provision of proactive, personalised, co-ordinated and more integrated health and social care in our communities	Partnership - One Knowsley	Debbie Bennett (One Knowsley)	Ongoing
Partnership	Strategic	Transformation for better health and care outcomes	Care Communities for perinatal mental health - national pilot	Develop this pathway for communities	Partnership - One Knowsley, PCN Kirkby, KMBC Public Health	Debbie Bennett (One Knowsley)	Ongoing
Partnership	Strategic	People enabled to be active	Sports and Physical Activity Strategy - actions	To provide facilities/ infrastructure to encourage sport and physical activity and to increase participation	Partnership - Sports and Physical Activity steering group	Andrew Donaldson (KMBC)	Ongoing
Partnership	Strategic	Focus on early intervention	Employment for Healthier Lives Programme	Focus on the redesign of employment services and the development of an enhanced approach to labour market programme delivery that has public health at its core	LCRCA	Rob Tabb (LCRCA)	2024
Partnership	Strategic	Most vulnerable supported	Plan for Prosperity	Sets out focus on addressing health inequalities in LCR, in particular with a commitment to a 'health in all policies' approach	LCRCA/KMBC	Jenny Rollinson (KMBC)	Ongoing

Internal	Strategic	Access to personal services	Fair Cost of Care and Market Sustainability	Produce Fair Cost of Care Model, provisional Market Sustainability Plan and Spend Report and implement revised fees and charges for 2023/24 in response to the outcome of the Fair Cost of Care exercise	KMBC - HASC	Jenny Rollinson (KMBC)	2023
Internal	Strategic	Access to personal services	Ensure readiness for Regulatory Reform	Ensuring that Adult Social Care strengthens Care Act compliance including a robust evidence base ahead of the upcoming changes to regularity reform and future CQC inspections which are due to begin from April 2023	KMBC - HASC	Jenny Rollinson (KMBC)	2023
Internal	Strategic	Access to personal services	Ensure readiness for Digital Reform	Contribute to the Development of the C&M Digital Strategy, review, refresh, retender and implement key systems as required to respond to emerging digital requirements of reform in readiness for Digital Reform	KMBC - HASC	Jenny Rollinson (KMBC)	2023
Internal	Strategic	Access to personal services	Ensure readiness for Charging Reform	Implementation of the charging reforms. Supporting self funders and existing service users to transition to care accounts and to work with system providers to implement these changes	KMBC - HASC	Jenny Rollinson (KMBC)	2023
Partnership	Strategic	Access to personal services	Knowsley Healthier Together priorities	Improving access to general practice, reducing avoidable hospital attendances and admissions, creating a single and simple front door to advice,	Partnership - Knowsley Healthier Together Board	Alison Lee (ICS)	Ongoing

				guidance and support and our focus on Northwood			
Partnership	Strategic	Transformation for better health and care outcomes	Enable greater independence for adults and older people in their own homes and local environment.	<ul style="list-style-type: none"> • We will implement a virtual ward service model in Knowsley to “go live” by the Autumn of 2022/23 • We will deliver the enhanced health in care homes model • We will deliver better quality value and patient experience from community services to support people with heart disease and respiratory conditions. This will build on the additional investment made by the NHS in Liverpool Heart and Chest Hospital • We will deliver our existing commitment to review intermediate care provision in Knowsley. We will ensure that it is fit for purpose and enables greater independence for adults and older people by supporting them to return to their own homes and local environment whenever possible 	Partnership - Knowsley Healthier Together Board	Alison Lee (ICS)	2023

Partnership	Strategic	Focus on early intervention	Work together for brighter futures for our children, young people and their families by breaking the cycle of poor outcomes for all regardless of their background.	<ul style="list-style-type: none"> • We will deliver the key milestones in our Special Educational Needs & Disabilities action plan with the intention of removing the Statement of Action. The work of the ICB here is focused on: <ul style="list-style-type: none"> o Improving the neuro-development pathway so that the backlog waits for children and families are cleared by January 2023 and overall waiting times reduced to 30 weeks or less o Supporting the Local Authority and Wirral Community Health and Care (WCHC) NHS Foundation Trust to improve the 0-25 service o We will work with the Local Authority on the development of Children's Hubs in the Borough to support children and families to get the best start in life 	Partnership - Knowsley Healthier Together Board	Alison Lee (ICS)	2023
-------------	-----------	-----------------------------	---	---	---	------------------	------

Partnership	Strategic	Transformation for better health and care outcomes	Work together to enable all residents to live long and healthier lives.	<ul style="list-style-type: none"> • We will, as a Marmot community, focus our work in Northwood, Kirkby our most deprived electoral ward. This is an asset-based approach to reducing health inequalities and improving health care and will be co-produced with the people who live, work and volunteer in Northwood. Through this we will develop a Knowsley approach to health improvement. Specific deliverables for 22/23: <ul style="list-style-type: none"> o Recruit a project manager from within the local community o Produce an asset map of Northwood (buildings, people, resources, groups etc) o Co-produce reports into how to improve GP access and urgent care for the people of Northwood 	Partnership - Knowsley Healthier Together Board	Alison Lee (ICS)	2023
-------------	-----------	--	---	--	---	------------------	------

Partnership	Strategic	Access to personal services	Work together to mitigate the impact of cost-of-living increases on our population	<ul style="list-style-type: none"> • We will work together to mitigate the potential impact of cold homes and fuel poverty on our population and health and care services in Winter 2022/23. We will: <ul style="list-style-type: none"> o Complete the baseline assessment tool for Excess winter deaths and illnesses associated with cold homes (NICE public health guideline NG6) and bring recommendations to Knowsley Healthier Together Board o Identify a local strategic lead for fuel poverty and support them to implement agreed recommendations o Use local Population Health Intelligence to target those cohorts who are at greater risk of fuel poverty and ill health, developing campaigns and targeted interventions with your Community and Council partners • We will support the work and recommendations of the Health and Wellbeing Board following the deep dive in September 2022 	Partnership - Knowsley Healthier Together Board	Alison Lee (ICS)	2023
-------------	-----------	-----------------------------	--	---	---	------------------	------

Internal	Operational	Most vulnerable supported	Shared Lives	In conjunction with Shared Lives plus, continue to expand the Shared Lives offer to include support to young people transitioning to Adult Social Care and those with low level mental health needs	KMBC - HASC	Jenny Rollinson (KMBC)	2023
External	Operational	Transformation for better health and care outcomes	Mental Health and Wellbeing - Advisory Services	Signposting and support for tenancy management that enables people to stay happy and healthy in their homes	Livv	Amanda Newton (Livv)	Ongoing
External	Operational	Most vulnerable supported	Support for the vulnerable - targeted customer interventions	Signposting and support for tenancy management that enables people to stay happy and healthy in their homes	Livv	Amanda Newton (Livv)	Ongoing
Partnership	Operational	Focus on early intervention	Child on Parent/Carer Abuse Guidance	Development of multi-agency structure and interventions/ support to agencies to address	Partnership - Violence Reduction Partnership	D/Supt Siobhan Gainer (Merpol)	2022-25
Partnership	Operational	Most vulnerable supported	Protecting Vulnerable People (PVP) work	SOS refresher training for Child Protection (CP) staff and sergeants. CPD delivered to all Detective Sergeants on quality supervisor oversight of CP investigations. Development of training re: Honour Bases Abuse and Female Genital Mutilation	Partnership - Merseyside Police and KMBC - Children's	DCI Paul Grounds (Merpol)	2023
Partnership	Operational	Focus on early intervention	Early Help work (VRP) - continuation	Continue with the early help work that has already been undertaken by the VRP. Identify interventions	Partnership - Violence Reduction Partnership	D/Supt Siobhan Gainer (Merpol)	2022-25

				that can support expectant mothers and wider family			
External	Operational	Focus on early intervention	Prevention	Deliver an improved Early Help offer for the residents of Knowsley, helping to signpost and support those who fall outside of statutory provision to prevent escalation in issues. Work in partnership to deliver a preventative, public health approach to solving problems for individuals, families and communities	Merseyside Police	C/Supt Andy Ryan (Merpol)	Ongoing
Partnership	Operational	Focus on early intervention	Trauma Informed Practice training (VRP)	Trauma informed practice training to be rolled out to front line agency staff over the next 3 years by the VRP – currently in development with Merpol	Partnership - Violence Reduction Partnership	D/Supt Siobhan Gainer (Merpol)	2022-25
External	Operational	Transformation for better health and care outcomes	Social Impact Programmes	Social impact programmes delivered directly by Livv and in partnership with KMBC as part of the Hardship Fund. Including a focus on mental health and wellbeing programmes	Livv	Amanda Newton (Livv)	Ongoing
External	Operational	Most vulnerable supported	Mental Health Advisory Team	Supporting customer with MH issues to sustain their tenancies - dedicated MH Advisory Team and a commissioned clinical support function	Livv	Amanda Newton (Livv)	Ongoing

Partnership	Operational	Access to personal services	Working Well programme	Workplace Health and Wellbeing Champions act as conduit for workplace health and ensuring that working well standards are being addressed. Includes Inclusion and Diversity, support to aging workforce etc.	Partnership - Chamber	Lesley-Martin Wright (KMBC)	Ongoing
Partnership	Operational	Focus on early intervention	Public Mental Health & Wellbeing	Public Health lead of activities to improve mental health & prevent suicides	Partnership - KMBC (health partners + wider delivery)	Sarah McNulty (KMBC)	Ongoing
Partnership	Operational	Focus on early intervention	Cancer awareness programme - VCSFE microgrants	Breast, prostate, colorectal, lung	Partnership - One Knowsley	Paula Kearns (One Knowsley)	Ongoing
Partnership	Operational	Access to personal services	Green social prescribing	Improving the quality of patient care and health outcomes and bringing core primary services together to enable greater provision of proactive, personalised, co-ordinated and more integrated health and social care in our communities	Partnership - One Knowsley	Debbie Bennett (One Knowsley)	2023
Partnership	Operational	Access to personal services	Holiday and Activities Programme	Delivery of programme at Easter, Summer, Winter - 3,000 per week	Partnership - One Knowsley/ KMBC	Paula Kearns (One Knowsley)	2022-24

Partnership	Operational	People enabled to be active	Active travel across LCR	31 key routes to be developed across LCR in three phases, making it easier and more attractive for people to get around by bike or foot. Builds on the foundations of the LCR Local Cycling and Walking Infrastructure Plan	LCRCA	Stephen Littler (LCRCA)	2023
Partnership	Operational	Most vulnerable supported	Housing First	Providing a home as the first response for people with multiple and complex needs. It then provides individualised support to deal with issues such as addiction, mental and physical health issues and the effects of trauma and abuse	LCRCA	Stephen Littler (LCRCA)	Ongoing
Internal	Operational	Most vulnerable supported	Targeted support for the most vulnerable	Through the Departments approach to Early Intervention and Prevention, we will continue to ensure that support is targeted both to support our most vulnerable residents, and to identify those whose needs and circumstances could worsen or deteriorate without timely support and intervention	KMBC - HASC	Jenny Rollinson (KMBC)	2023
Internal	Operational	Access to personal services	Implement Liberty Protection Safeguards	The Deprivation of Liberty Safeguards (DoLS) will be replaced with a new scheme known as the Liberty Protection Safeguards (LPS)	KMBC - HASC	Jenny Rollinson (KMBC)	2023

Internal	Operational	Access to personal services	Implement Mental Health Reforms	Implement Mental Health Reforms - Detail in relation to reform implementation is not currently set out nationally	KMBC - HASC	Jenny Rollinson (KMBC)	2024
Partnership	Operational	Access to personal services	Deliver the NHS Mandate and operational priorities for 2022/23 and the 4 local priorities as agreed by the Healthier Together Board (Northwood Marmot/population health, a single front door to advice and guidance, reducing avoidable admissions and better access to GP practices)	<ul style="list-style-type: none"> • We will improve access to urgent and planned care • We will respond to COVID including the vaccination programme with the aim that uptake is better than the regional average with progress made in addressing the most at risk and vulnerable groups • We will prevent avoidable hospital admissions at local hospitals with the aim of delivering a 10% improvement in the levels of ambulatory care sensitive admissions • We will implement the MerseyCare model of LifeRooms in Knowsley using local libraries as bases for help and support for everyone with a focus on mental health recovery 	Partnership - Knowsley Healthier Together Board	Alison Lee (ICS)	2023

Partnership	Operational	Access to personal services	Work together to improve access to General Practice and support further development of our three Primary Care Networks.	<ul style="list-style-type: none"> • We will improve access to GPs by better understanding the barriers to access facing our residents • We will respond to the outcomes of the Fuller review and support community resilience and ability to self-care • We will undertake a baseline assessment of PCNs in September 2022 with the aim of each of the progressing one step on the PCN maturity framework 	Partnership - Knowsley Healthier Together Board	Alison Lee (ICS)	2023
Partnership	Strategic	Most vulnerable supported	Knowsley Safeguarding Partnership for Children	Knowsley Safeguarding Children Partnership (KSCP) is an independent statutory body responsible for ensuring that individuals and organisations work effectively together to safeguard children in Knowsley.	Partnership - KMBC - Childrens, Merseyside Police, NHS	Julie Moss (KMBC)	Ongoing
External	Operational	Focus on early intervention	Enrichment programme for students	College curriculums to incorporate a cross-cutting theme to highlight net zero carbon in each sector and incorporate this into the enrichment programme for students	Knowsley Community College	Mark Doyle (StH&KCC)	2023
Partnership	Strategic	Strong community	Development of new management agreement with Volair	Development/delivery of Sports Development and Physical Activity Strategy	KMBC/Volair	Caroline Holmes (KMBC)	Ongoing

Internal	Strategic	Access to personal services	Falls and fracture prevention	Develop and implement action plan inc new Falls and Fracture Prevention Service and Safe and Steady Programme	KMBC - HASC	Jenny Rollinson (KMBC)	Complete
Partnership	Strategic	Focus on early intervention	Lung Cancer awareness programme - Kirkby	Focus on supporting local people to recognise the signs and symptoms of lung cancer in Kirkby, where rates are highest	Partnership - One Knowsley	Racheal Jones (One Knowsley)	Complete
Partnership	Operational	Focus on early intervention	CPD Domestic Abuse Intensification for partner agencies (PVP)	Partner briefings/ trainings re: domestic homicide reviews and the links to suicide. Joint Agency DA suicide prevention working group in place since June 21 - working in partnership to understand and prevent suicide in domestic abuse and to formulate an action plan to achieve the objectives pan Merseyside. The group looked at the key findings from the work of Kent and Medway Suicide Prevention Team in highlighting the links between domestic abuse and suicide	Partnership - Merseyside Police, local domestic abuse services, Community Safety Partnership, ASC, CCG, Champs, Open University.	DCI Paul Grounds (Merpol)	Complete

Partnership	Operational	Transformation for better health and care outcomes	Community Vaccine Champions	Maximise COVID vaccine take-up	Partnership - One Knowsley	Paula Kearns (One Knowsley)	Complete
Internal	Operational	Focus on early intervention	Youth Offer	Merseyside Youth Association Ltd. (MYA) commenced the new Youth Service 1st Feb 2022 consisting of Detached Youth Work and Targeted 1:1 interventions Youth Community Fund is due to be launched pending final approval. This will be circulated widely to all local organisations and groups to apply	KMBC - Children's	Julie Moss (KMBC)	Complete
Partnership	Operational	Focus on early intervention	Gambling Policy	Implementation of the gambling policy, including all Health and Wellbeing Partners adopting a Workplace Charter on Gambling to access dedicated support for those with or impacted by problem gambling which can help to prevent serious harm and promote recovery from harm	Partnership - Health and Wellbeing Board/ all	Sarah McNulty (KMBC)	Complete



Priority 3: Where people of all ages are confident and can achieve their full potential

Focus	Delivery	Key Objective	Headline Action	Summary	Partnership/ Organisation	Lead Officer/ Organisation	Timescale
External	Strategic	Digital Inclusion	Digital inclusion	Development of a plan to address digital inclusion in Knowsley	KMBC	Phil Aspinall (KMBC)	Ongoing
Internal	Strategic	Better family support	Children's Sufficiency Strategy	Sufficient care and support to children and families in need - including maximising foster placements	KMBC - Children's	Lara Wood (KMBC)	2025
Internal	Strategic	Transformation for better outcomes	Supporting Hardship	Administering Council's Hardship Fund to those most in need and administering the Government Household Support Fund. On-going support via Emergency Support	KMBC - Resources	Justin Thompson (KMBC)	Ongoing
Internal	Strategic	Transformation for better outcomes	Homelessness accommodation and support	Homelessness: Provision of housing advice, homelessness assessment, provision of temporary accommodation and support to prevent homelessness and relieve	KMBC - RED	Barry Fawcett (KMBC)	Ongoing

				homelessness – achieved through effective service delivery and monitoring of key demand statistics			
External	Strategic	Residents improved skills	Employment and skills needs	Working with local employers to expand its apprenticeship offer and offer bespoke skills training to meet local business need	Knowsley Community College	Simon Pierce (StH&KCC)	Ongoing
Partnership	Strategic	Better family support	Children and Families Plan - priorities	Prevention, Education, Family - outcome statements and associated assurance framework to undergo refresh	Partnership - Children and Families Board	Julie Moss (KMBC)	Ongoing
Partnership	Strategic	High quality education	Not in Education, Employment and Training strategy	Includes: Career Connect from Y8 in schools, Virtual School dedicated programme of support, work with SEND services, schools and colleges to track and monitor NEET young people with EHCP	Partnership - KMBC/ Schools	Julie Moss (KMBC)	Ongoing
Partnership	Strategic	Better family support	Family Hubs	Working in partnership with govt to develop Family Hubs - in Knowsley this is linked to the Supporting Families vision of an effective early help system in the provision of a single access point to a range of services in Knowsley. Particular focus on first 1001 days, and parenting support and breastfeeding	Partnership - Best Start for Life Group (new) - KMBC, Wirral Community Health NHS Trust, maternity service partners	Lara Wood (KMBC)	2025

Partnership	Strategic	Better family support	Northwood - Cradle to Career	Support children/ families at disadvantage to achieve desired outcomes. Example for partnership of the locally targeted work - moving into delivery stages	Partnership - Knowsley Council / schools / careers advice providers	Julie Moss (KMBC)	2023
Partnership	Strategic	Residents improved skills	Skills development at City Region level	Skills Action Plan for 2022/23 is active and there is a Skills Strategy up to 2023. Be More Apprenticeship Portal has been extended. There is the continuing involvement of employer-led Skills for Growth Action Plans across key sectors, and skills brokerage service for businesses	LCRCA/KMBC	Patrick McCarten/Julie Moss (KMBC)	Ongoing
Partnership	Strategic	Transformation for better outcomes	Cost of Living crisis support	Bring together key stakeholders to develop and execute response	Partnership - KMBC/ all	Justin Thompson (KMBC)	Ongoing
External	Operational	Residents improved skills	Livv Apprentice Programmes	Employing local people and building confidence and potential	Livv	Amanda Newton (Livv)	Ongoing
External	Operational	Residents improved skills	Resident capacity building	Training in how to scrutinise practice, understanding decision-making in respect of regeneration decisions	Livv	Amanda Newton (Livv)	Ongoing
Internal	Operational	Better family support	Supporting Families	Implement the new outcome framework and sign-up conditions of the Supporting Families Programme	KMBC - Children's	Julie Moss (KMBC)	Ongoing

External	Operational	Residents improved skills	Social Impact programmes	Numeracy and Literacy training and access to employment training. Training for young men - how to cook. Enables wider engagement	Livv	Amanda Newton (Livv)	Ongoing
External	Operational	High quality education	FE provision	Introduction of wide range of new programmes providing opportunities for young people and adults to access vocational and technical provision	Knowsley Community College	Mark Doyle (StH&KCC)	2023
External	Operational	Transformation for better outcomes - for young people	Violent Reduction Partnership	Work within education settings	Merseyside Police	D/Supt Siobhan Gainer (Merpol)	Ongoing
Partnership	Operational	Residents improved skills	Apprenticeship support	Support to businesses and two secondary schools to support apprenticeship roles	Partnership - Chamber	Steve McKeown (KMBC)	Ongoing
Partnership	Operational	Residents improved skills	Future Female Leaders	Mentoring programme	Partnership - Chamber	Steve McKeown (KMBC)	Ongoing
Partnership	Operational	Residents improved skills	Inspire Academy	Career guidance	Partnership - Chamber	Steve McKeown (KMBC)	Ongoing
Partnership	Operational	Residents improved skills	Youth Chamber	Developing a new offer for 15 - 25 to support those that wish to start up in business, with workshops to develop their skills, networking events, an online hub and mentors	Partnership - Chamber	Steve McKeown (KMBC)	Ongoing

Partnership	Operational	Residents improved skills	Adult and Community Education provision	Increase delivery of adult, community, mental health and family learning. Focusing on Digital Inclusion, Functional Skills Maths/English and ELD	Partnership - KMBC/CA	Julie Moss (KMBC)	Ongoing
Partnership	Operational	High quality education	Quality of Education	Support for schools and education providers to maintain/attain high levels of standards, and effective transitions between different phases of education and career development	Partnership - Knowsley Council / schools / careers advice providers	Julie Moss (KMBC)	Ongoing
Internal	Operational	Residents improved skills	Worklessness programmes	Reduce worklessness by offering bespoke support to residents across range of programmes including Ways to Work, Restart, etc.	KMBC - RED	Patrick McCarten (KMBC)	Ongoing
Partnership	Operational	Residents improved skills	Adult Education Budget	To help people have the skills to both get into, and progress in, work. Increased focus on test and learn activities and family learning	LCRCA	Stephen Littler (LCRCA)	Ongoing
Internal	Operational	Residents improved skills	Local job opportunities for local people	Delivery of Core Employability Programmes and UK Shared Prosperity Fund Restart Delivery Extension to positive inclusion programme	KMBC - RED	Patrick McCarten (KMBC)	Ongoing
Partnership	Operational	Residents improved skills	Households into Work	Devolved programme helping people with complex needs enter or re-enter full time	LCRCA	Stephen Littler (LCRCA)	Ongoing

				employment through personalised support			
Internal	Operational	Residents improved skills	Knowsley Works – sustainability & delivery	Work continues with the UKSPF Employment Initiatives Workshops to develop the delivery plan for the 1 year of UKSPF funding from April 2024	KMBC - RED	Patrick McCarten (KMBC)	Ongoing
Partnership	Operational	Residents improved skills	Knowsley Advice and Guidance (NEET)	Create an action plan to reduce NEET across borough. Work in partnership with other services and agencies to ensure a multi-disciplinary – joined up approach	Partnership - KMBC-Children's plus others	Julie Moss (KMBC)	Ongoing
Internal	Operational	Residents improved skills	FACE Community Learning Provision	Increase delivery of adult, community, mental health and family learning. Focusing on Digital Inclusion, Functional Skills Maths/English and ELD.	KMBC - Children's	Julie Moss (KMBC)	Ongoing
Partnership	Operational	Transformation for better outcomes	LCR Connect	Full-fibre, ultrafast, gigabit-capable network spanning the Liverpool City Region	LCRCA led Joint Venture	Stephen Littler (LCRCA)	2023

Partnership	Strategic	Transformation for better outcomes	Borough of Culture Programme 2022	Ensuring that this creates a confidence and enthusiasm for residents, for culture and wider participation	Partnership - Borough of Culture Steering Group	Paula Williams (KMBC)	Complete
Partnership	Strategic	Better family support	Attendance Strategy	Implement. Includes a focus on persistent absence and on those electively home-educated.	Partnership - KMBC/ schools	Jill Albertina (KMBC)	Complete
Internal	Operational	High quality education	School place sufficiency	To support the execution of pupil place planning duties for all children	Partnership - KMBC-Children's and Archdiocese, Diocese, and Headteachers.	Jill Albertina (KMBC)	Complete
Partnership	Strategic	High quality education	SEND Strategy	Refreshed. Co-produced. Part of the longer term SEND transformation. The development of the new strategy has now commenced and consultation with key stakeholders including schools, parents and partners is currently taking place in line with the development of Knowsley's local response to the SEND Green Paper consultation	Partnership - SEND Partnership Board	Michael Wharton/Julie Moss (KMBC)	Complete
Internal	Operational	Residents improved skills	Ways to Work	Commence delivery of devolved programme helping people with complex needs enter or re-enter	KMBC - RED	Patrick McCarten (KMBC)	Complete

				full time employment through personalised support			
Internal	Operational	High quality education	Social Workers in Schools	Implement SWiS Team. Engage all Head teachers and agree Performance Framework and mechanism to evidence impact	KMBC - Children's	Jo Parry (KMBC)	Complete
Partnership	Strategic	Transformation for better outcomes	Care Leavers Strategy	Development & implementation of a new approach for Care Leavers to support improved outcomes and address concerns identified by Ofsted	Partnership - Knowsley Council / Livv / Health	Lara Wood (KMBC)	Complete
Internal	Strategic	Transformation for better outcomes - for young people	Children Looked After (CLA) Strategy	Development & implementation of a new CLA Strategy to support sufficiency strategy, ensure children are safeguarded and improve long-term outcomes	KMBC - Children's	Lara Wood (KMBC)	Complete