



Knowsley Council

Knowsley Local Plan: Core Strategy

Sub-National Household Projections

Summary of data released by DCLG on 27 February 2015

MARCH 2015

1. Introduction

- 1.1 On 27 February 2015, the Department for Communities and Local Government (CLG) published the 2012-based Sub-National Household Projections. These projections set out, on a local authority basis, the projected changes in the number of households over a 25 year period. The 2012-based household projections replace the 2011-based interim projections.
- 1.2 On 10 March 2015, CLG published a further statistical release as part of the 2012-based Sub-National Household Projections. This included detailed data for modelling and analytical purposes.
- 1.3 All data and accompanying methodology notes are available on the CLG website at:
- <https://www.gov.uk/government/collections/household-projections>
- 1.4 This briefing note sets out the key elements of the 2012-based household projections as they relate to Knowsley. This note focuses on presenting data only; it does not undertake any interpretation of the data. The Council intends to publish a separate document which presents its views on the implications of this data for the Knowsley Local Plan.

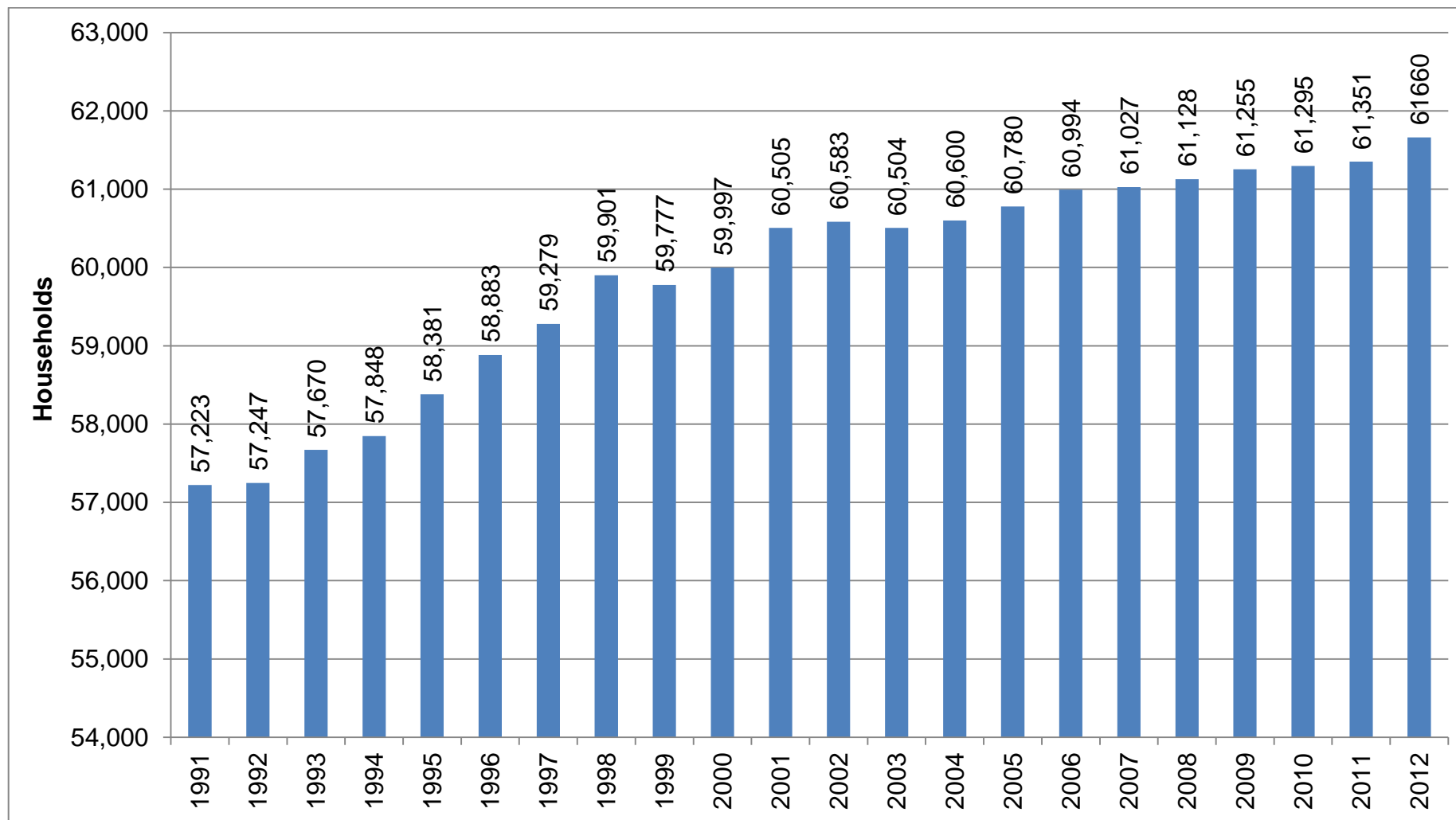
2. Household Projections Data

- 2.1 The remainder of this document presents the data for Knowsley arising from the household projections in the form of charts and tables with accompanying data labels as described below. All data sources are stated.

Chart / Table	Description
Figure 1: Past Household Change in Knowsley, Total Households, 1991-2012	This chart shows the 2012-based household projections covering the period 1991 to 2012. This effectively covers the period before the base date of the projections.
Figure 2: Sub-national Household Projections for Knowsley – Total Households, 2012-2037	This chart shows the 2012-based household projections covering the period 2012 to 2037. This effectively covers the full period of the household projections, over 25 years from their 2012 base date.
Figure 3: Sub-national Household Projections for Knowsley – Annual Household Change, 2012-2037	This chart shows the year-on-year household changes projected in the 2012-based household projections, over the 25 year projection period from 2012 to 2037. It also shows the annual average household change over the 25 year period.
Table 1: Sub-national Household Projections for Knowsley, Household Sizes, 2012-2037	This table sets out the average projected household size in persons, at five year intervals between 2012 and 2037, over the 25 years of the household projection period.
Table 2: Average	This table compares the 2012-based household

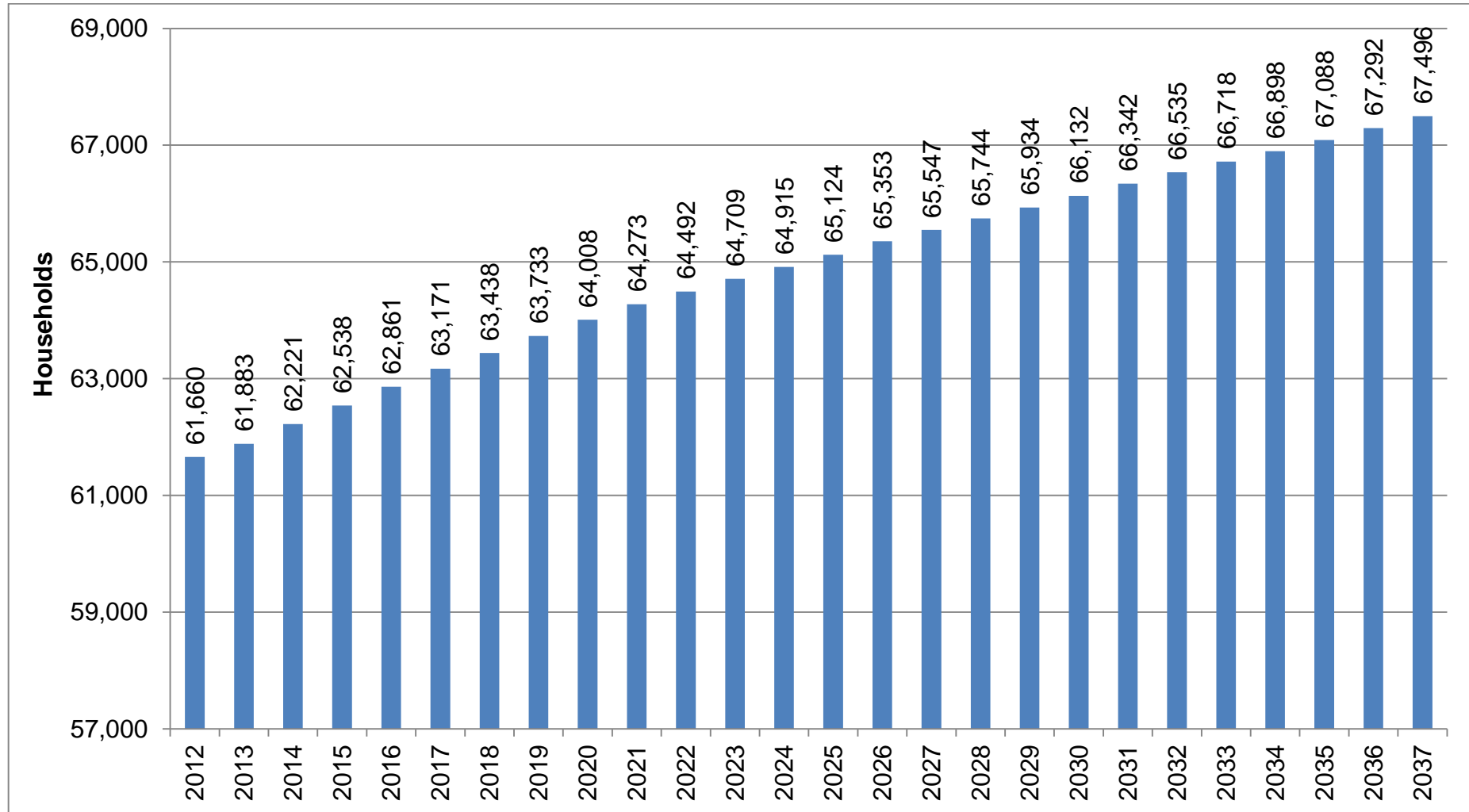
Household Growth Attributable to Household Projections in Knowsley	projections with the 2011-based interim household projections. This shows the projection period, overall projected change in the number of households, and the annual average change attributable to each set of projections. This table also includes the 2012-based household projections as they apply to the period 2012 until 2028 (i.e. the remainder of the Local Plan Core Strategy period).
Figure 4: Comparison of Sub-National Household Projections for Knowsley, 2012-based and 2011-based	This chart shows a comparison of the 2012-based household projections with the 2011-based interim household projections over the period from 2003 to 2037. Linear trend lines have been applied to extrapolate the projections over the relevant period.
Figure 5a: Sub-national Household Projections for Knowsley – Male and Female Headed Households, 1991 - 2037	This chart shows the outcomes of the 2012-based household projections in terms of the change in households headed by male and female household reference persons, over the period between 1991 and 2037.
Figure 5b: Sub-national Household Projections for Knowsley – Male and Female Headed Households - Population, 1991 – 2037	As figure 5a, but shows the population residing within households headed by male and female reference persons, over the period between 1991 and 2037.
Figure 6a: Sub-national Household Projections for Knowsley – Household Composition, 1991 – 2037	This chart shows the outcomes of the 2012-based household projections in terms of the household composition, including households including couples, single people and previously married (i.e. divorced) people, over the period between 1991 and 2037.
Figure 6b: Sub-national Household Projections for Knowsley – Household Composition - Population, 1991 – 2037	As figure 6a, but shows the population residing within households of different household composition, over the period between 1991 and 2037.
Figure 7a: Sub-national Household Projections for Knowsley – Age of Head of Household, 1991 – 2037	This chart shows the outcomes of the 2012-based household projections in terms of the change in households headed by household reference persons of different age groups, i.e. 0-29, 30-64 and 65 plus, over the period between 1991 and 2037.
Figure 7b: Sub-national Household Projections for Knowsley – Age of Head of Household - Population, 1991 – 2037	As chart 7a, but shows the population residing within households of different ages of household reference person, over the period between 1991 and 2037.

Figure 1: Past Household Change in Knowsley, Total Households, 1991-2012



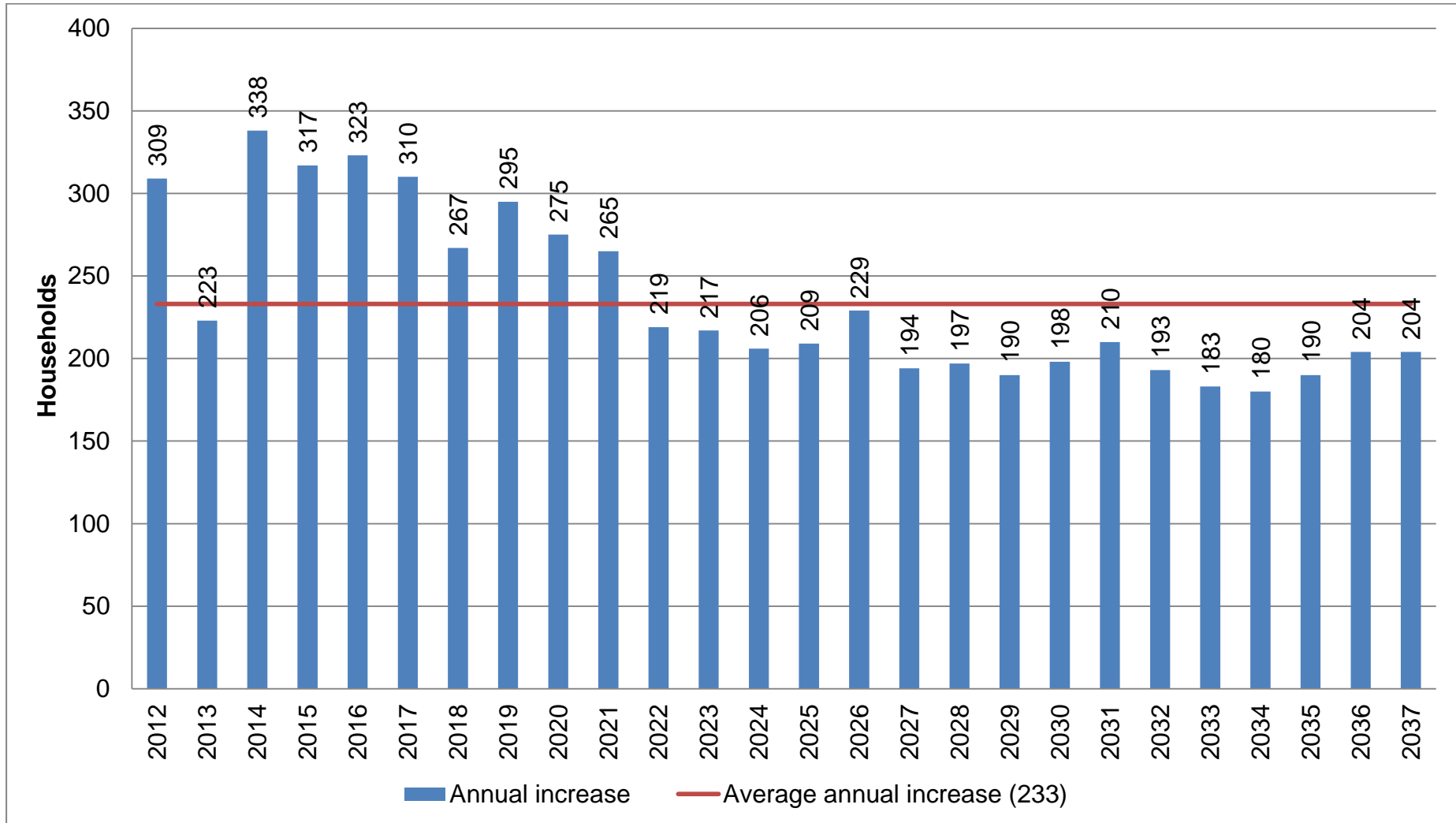
Source: 2012-based Sub-national Household Projections (CLG, 2015)

Figure 2: Sub-national Household Projections for Knowsley – Total Households, 2012-2037



Source: 2012-based Sub-national Household Projections (CLG, 2015)

Figure 3: Sub-national Household Projections for Knowsley – Annual Household Change, 2012-2037



Source: 2012-based Sub-national Household Projections (CLG, 2015)

Table 1: Sub-national Household Projections for Knowsley, Household Sizes, 2012-2037

Year	2012	2017	2022	2027	2032	2037
Knowsley	2.352	2.300	2.261	2.229	2.197	2.165

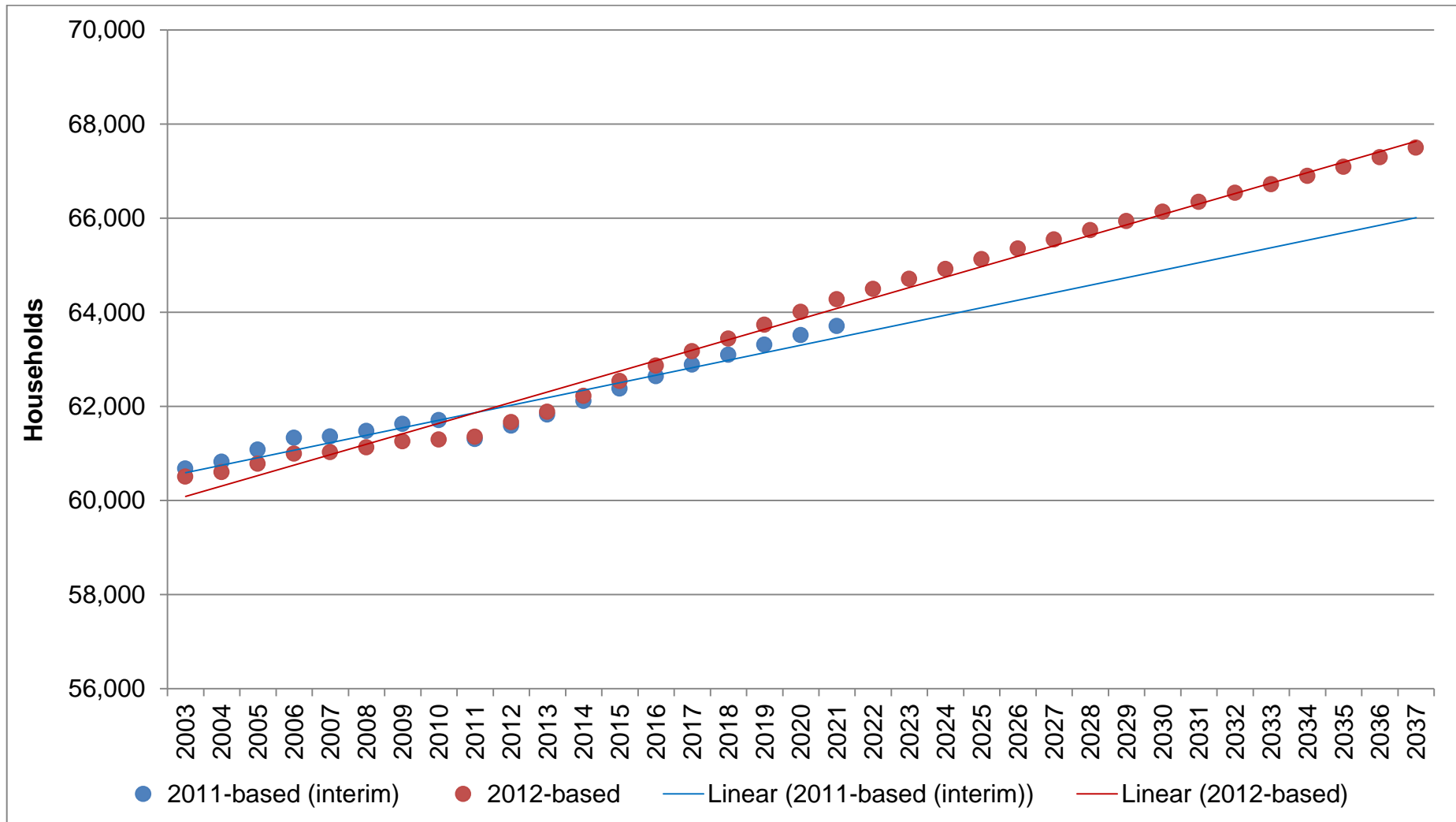
Source: 2012-based Sub-national Household Projections (CLG, 2015)

Table 2: Sub-national Household Projections for Knowsley - Comparison of 2011-based and 2012-based projections

Projections	Time period	Total years	Total growth	Average annual growth
2011-based (interim)	2011-2021	10	2,121	241
2012-based	2012-2037	25	5,836	233
2012-based	2012-2028	16	4,084	258

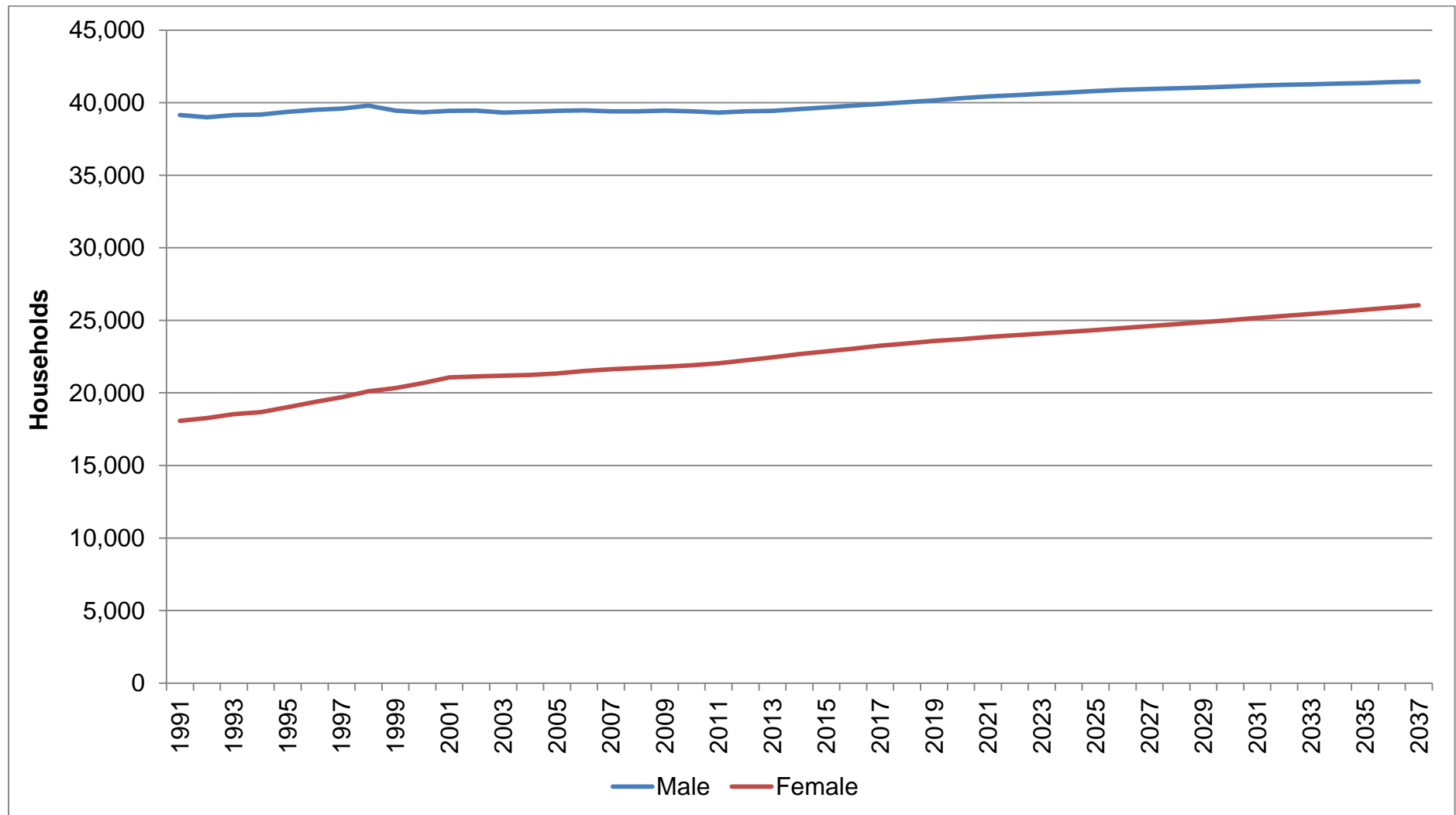
Source: 2012-based, 2011-based, Sub-National Household Projections (CLG, Various)

Figure 4: Sub-national Household Projections for Knowsley - Comparison of 2011-based and 2012-based projections



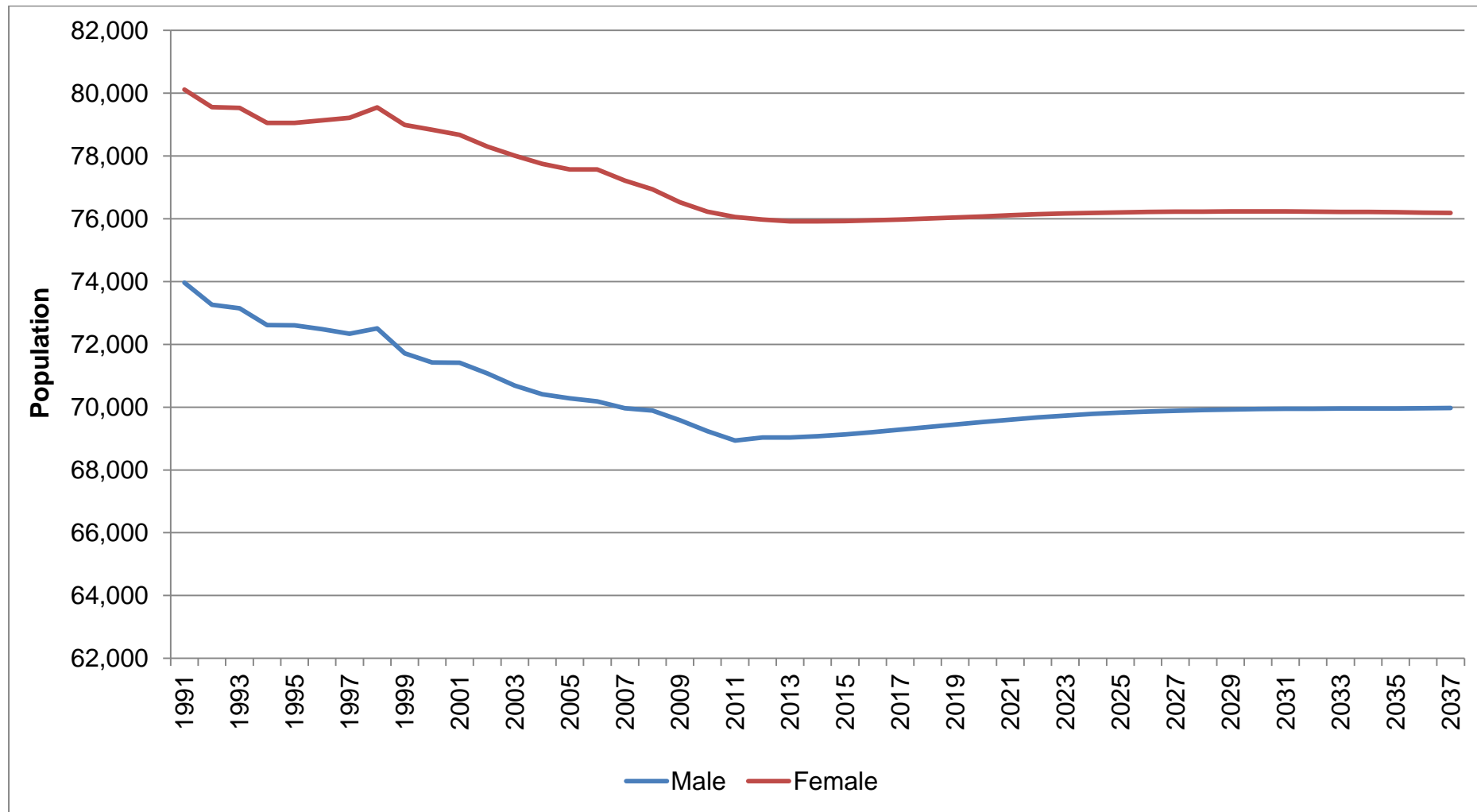
Source: 2012-based, 2011-based Sub-National Household Projections (CLG, Various)

Figure 5a: Sub-national Household Projections for Knowsley – Male and Female Headed Households, 1991 - 2037



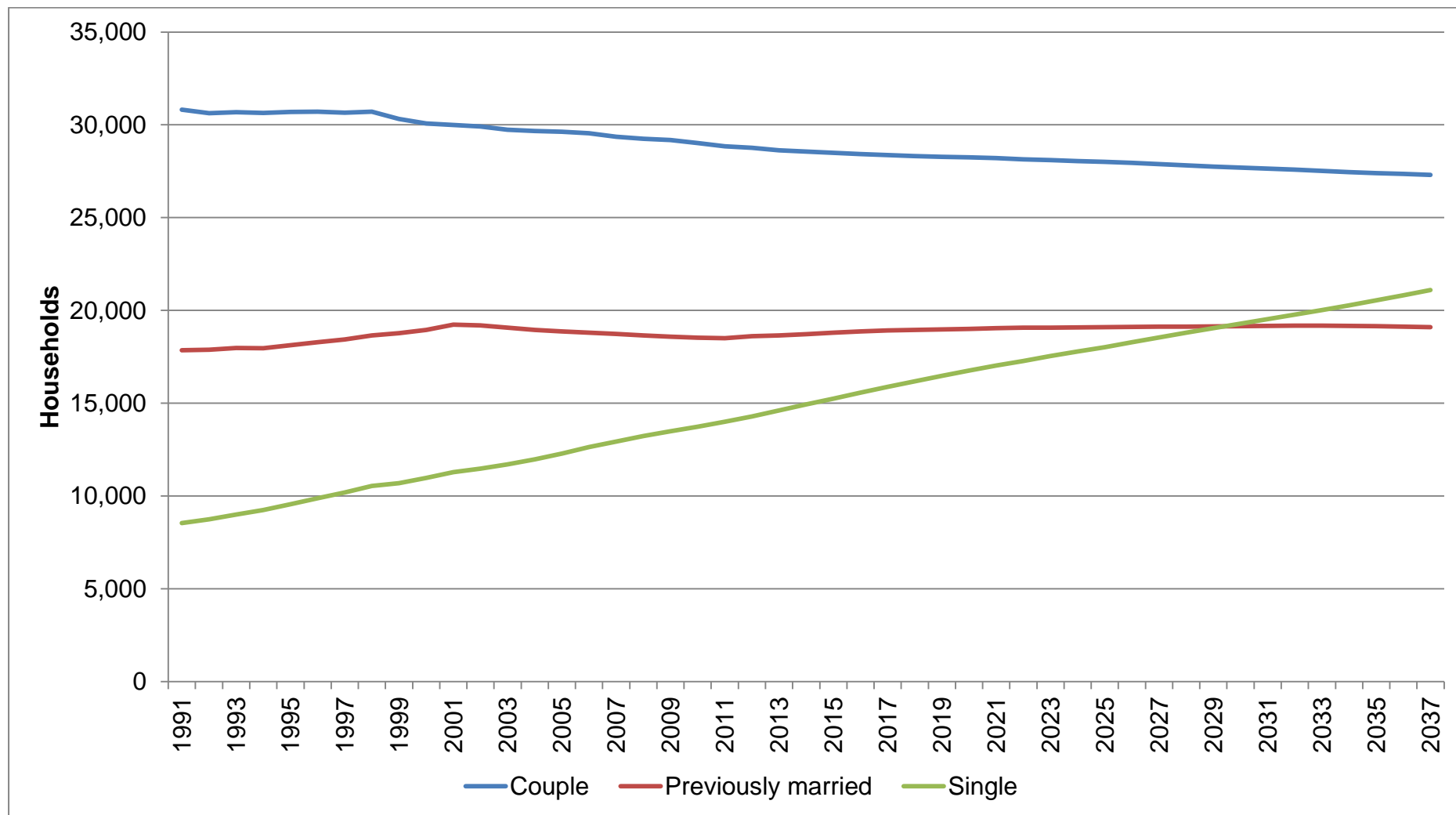
Source: 2012-based Sub-national Household Projections (CLG, 2015)

Figure 5b: Sub-national Household Projections for Knowsley – Male and Female Headed Households - Population, 1991 – 2037



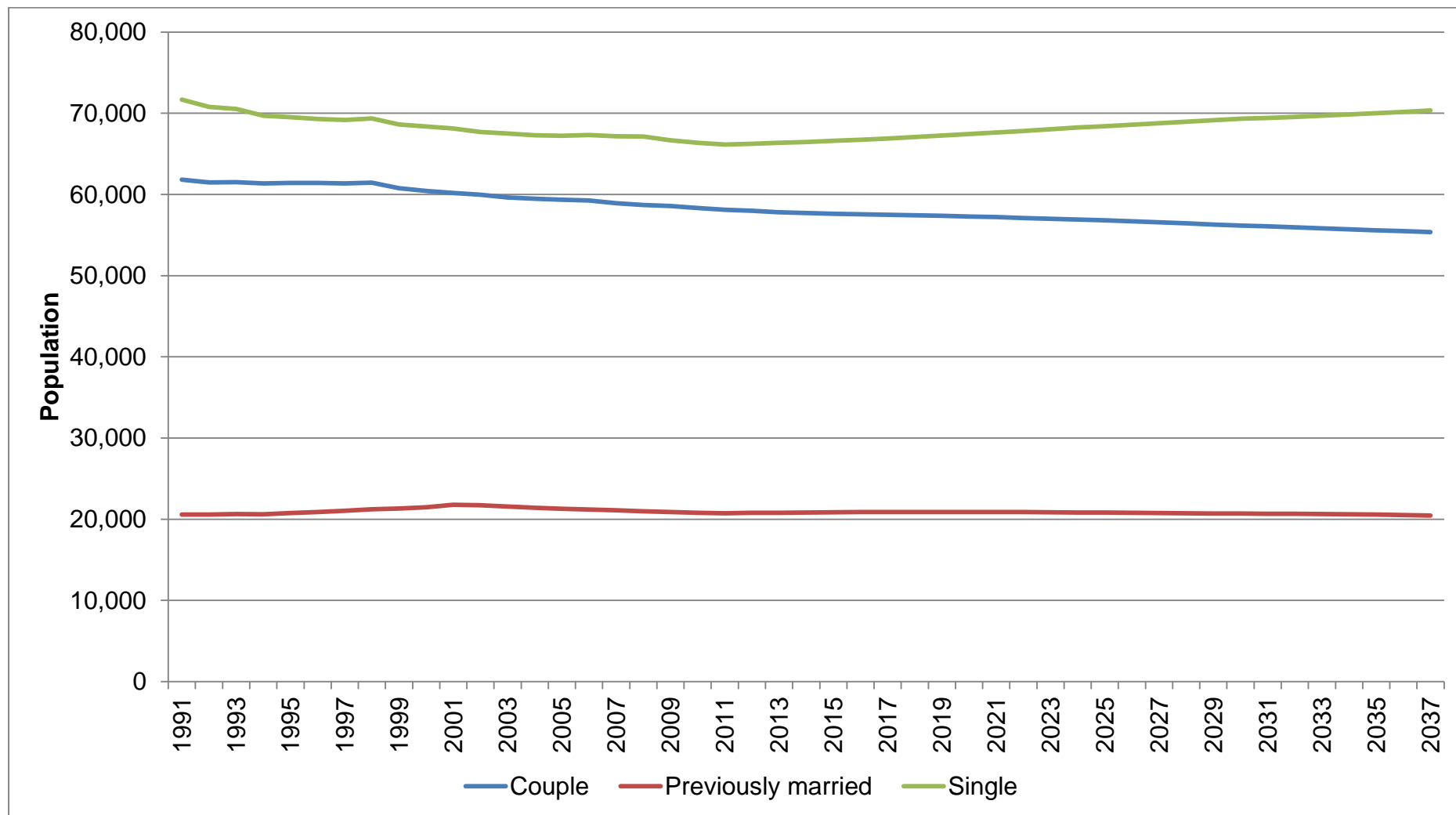
Source: 2012-based Sub-national Household Projections (CLG, 2015)

Figure 6a: Sub-national Household Projections for Knowsley – Household Composition, 1991 – 2037



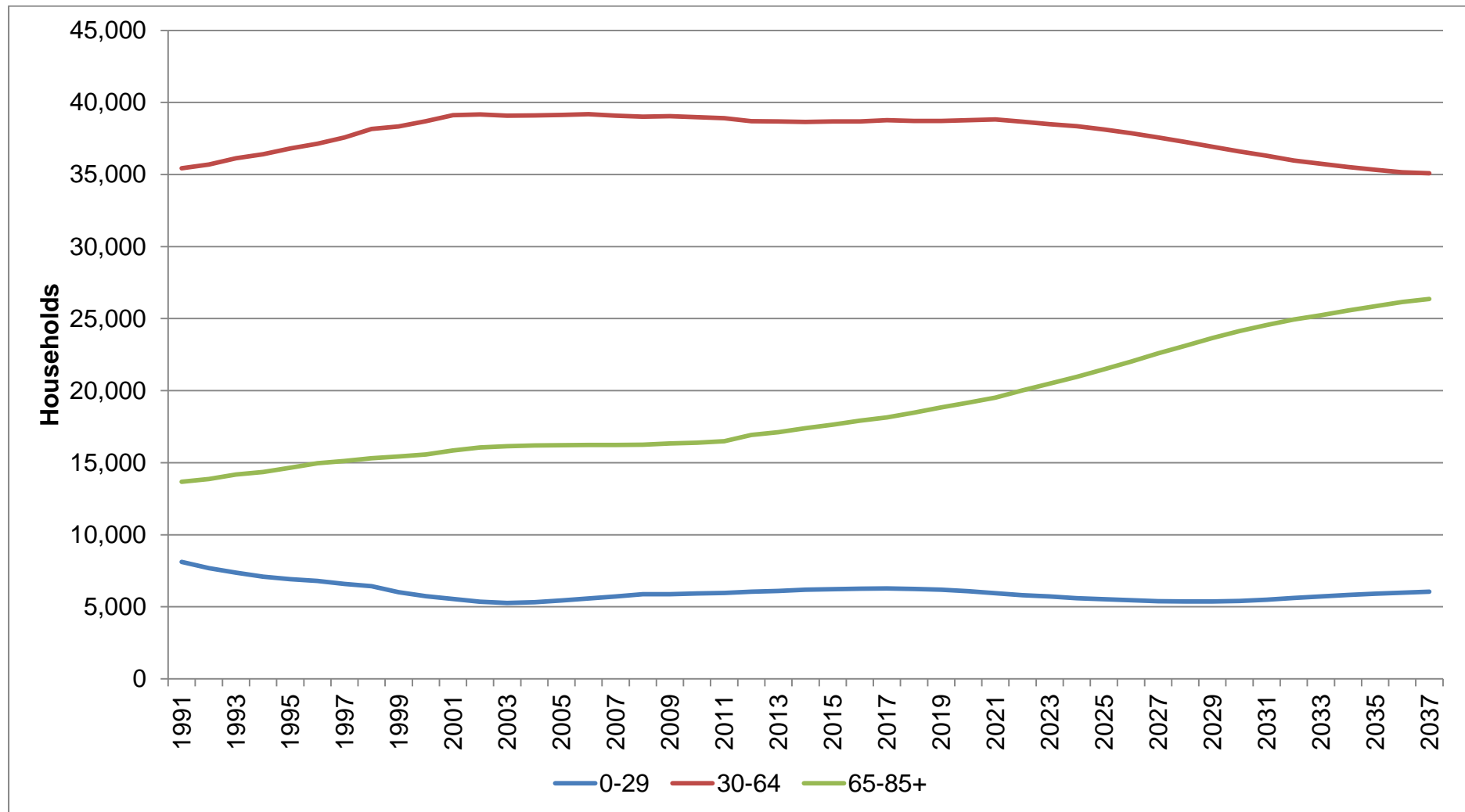
Source: 2012-based Sub-national Household Projections (CLG, 2015)

Figure 6b: Sub-national Household Projections for Knowsley – Household Composition - Population, 1991 – 2037



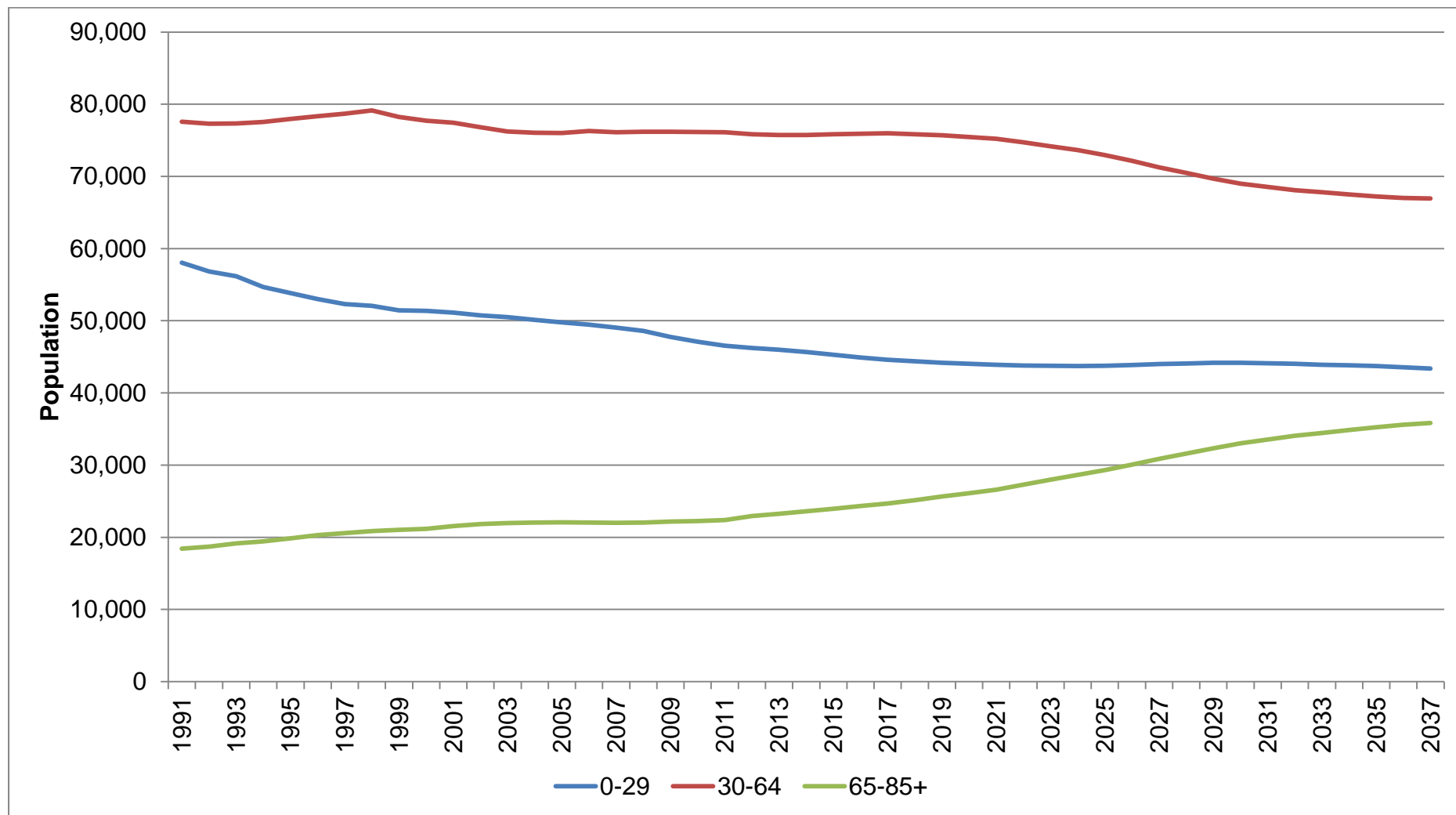
Source: 2012-based Sub-national Household Projections (CLG, 2015)

Figure 7a: Sub-national Household Projections for Knowsley – Age of Head of Household, 1991 – 2037



Source: 2012-based Sub-national Household Projections (CLG, 2015)

Figure 7b: Sub-national Household Projections for Knowsley – Age of Head of Household - Population, 1991 – 2037



Source: 2012-based Sub-national Household Projections (CLG, 2015)

For more information log on to
www.knowsley.gov.uk/LocalPlan

You can also get this information in other formats.
Please phone Customer Services on 0151 443 4031
or email customerservices@knowsley.gov.uk



Knowsley Council

Copyright © 2015 Metropolitan Borough of Knowsley