

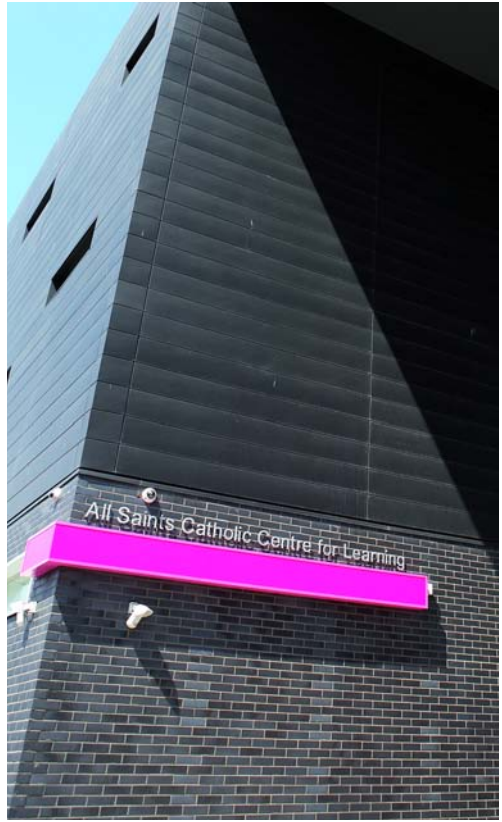


Knowsley 6th Form College



KNOWSLEY 6TH FORM COLLEGE PROSPECTUS 2011





GENERAL INFORMATION

- 04 CHOOSE THE BEST -
CHOOSE KNOWSLEY**
- 06 STUDENT SUPPORT**
- 08 ENRICHMENT**
- 10 WHAT I NEED TO KNOW**
- 12 OUR CAMPUSES**
- 14 STUDENT SOUNDBITES**

OUR COURSES

20 A LEVELS

30 ADVANCED DIPLOMAS

40 BTEC LEVEL 2 DIPLOMAS

41 BTEC LEVEL 3 DIPLOMAS

46 OTHER AWARDS

**VISIT OUR WEBSITE
WWW.KNOWSLEY.GOV.UK/
SIXTHFORMCOLLEGE
FOR MORE INFO!**

CONTENTS



**KNOWSLEY IS CHANGING
THE WAY SIXTH FORM
COURSES ARE ORGANISED
FROM SEPTEMBER 2010.**

We have developed a common, borough-wide curriculum and timetable for all sixth form students in Knowsley, which will make choosing your future studies easier and at the same time make sure they are geared to meet your needs.

Working as a partnership between Knowsley Community College's Roby Sixth Form Centre, Halewood Centre for Learning and All Saints Catholic Centre for Learning, the new Knowsley Sixth Form College will offer a wide range of sixth form courses across three campuses that will provide learners with an opportunity to access the best teaching professionals and education facilities in Knowsley.

Building on past successes, the Knowsley Sixth Form College will offer students a friendly and caring environment that will strive hard to achieve the best from its students by encouraging them to achieve academic excellence along with providing a rewarding and engaging post-16 experience.

**CHOOSE
THE BEST -
CHOOSE
KNOWSLEY**

A student's programme may be entirely based within one of the Sixth Form campuses, but there is an opportunity for students to extend their choice by selecting courses on other campuses to complement their studies. Free transport will be in place to enable students to move swiftly between delivery sites. In addition, other post-16 courses will be available at Knowsley Community College's Kirkby campus. When considering your options, if there is any additional information that you need, or you would like to arrange to visit any of the campuses, please do not hesitate to contact the campuses directly.

The new Knowsley Sixth Form College has been established as a partnership between three existing campuses that are now working closely together. The Roby Sixth Form Centre campus is based in Huyton and features a purpose-built centre for Advanced Level students, complete with study and lecture rooms, fully equipped with IT resources, a 180-seat performing arts theatre, art and design studios, Apple Mac music and recording suite, and much more. The College enjoys a modern, student-friendly environment, and provides a comfortable, well equipped place to learn and to socialise. A very high proportion of Roby Sixth Form Centre students have each year been successful in progressing on to universities or into professional careers. Former students rate the College highly for providing them with excellent preparation for university life and for the world of work.

The Halewood Campus is located within the new state of the art Halewood Centre for Learning. Classrooms equipped with the latest technology, flexible teaching spaces and modern furnishings, come together to facilitate a sophisticated and stimulating learning environment. In addition to this, sixth form students can enjoy access to the centre's sports facilities including a fitness suite, and multi-use games areas, as well as exclusive use of their own homebase, equipped with laptops, study areas, recreational areas and catering facilities. At the Halewood campus all students can expect to receive a challenging yet supportive and enjoyable learning experience in which they can flourish and achieve. As well as a strong academic focus, Halewood Centre for Learning has specialist Performing Arts School status, a keen sporting tradition, and a thriving Duke of Edinburgh Award, Gifted and Talented programme and an AimHigher scheme. All of which facilitate a varied programme of extra

curricular activities designed to motivate and extend individuals whatever their abilities and interests. With the vast majority of students progressing successfully on to University courses, GAP year projects, training or employment, the Halewood Campus provides a sound basis for students to achieve their full potential.

The All Saints campus is based within All Saints Catholic Centre for Learning in Kirkby. The campus is in a brand-new building that provides a range of academic and vocational courses to meet students' needs. Learning is supported by fantastic new facilities, including full use of Apple Macbook pro laptops in the dedicated, vibrant Sixth Form Home Base. This campus has a particular focus on Business & Enterprise, ICT & Finance courses that have proved extremely popular with learners in recent years. By choosing the right combination of courses at All Saints, increasing numbers of students have gone on to study Business-related degree courses at Liverpool John Moores and Edge Hill Universities as well as to take advantage of paid summer holiday internships at local businesses at the end of Year 12. With high quality teaching by dedicated staff, All Saints ensure that each student is supported in a variety of ways to maximise their progress. Before you enrol on any course within the Knowsley Sixth Form College we believe that it is important for you to consider how the new courses you have chosen will lead to future opportunities. You need to understand that a period of further study for one, two or even three years will demand time, energy, and the discipline to meet personal and academic challenges that will bring you success.

However, success is not only measured in terms of academic performance but in your personal and social development. Taking part in extra activities outside your weekly study hours that may be academic, social, religious, cultural and sporting will enrich your experience in Knowsley Sixth Form College and help to prepare you for your future. A dedicated team of specialist staff and Personal Tutors are on hand in all three campuses to support, advise and guide you throughout your time with us.

We sincerely hope that all learners who come into Knowsley Sixth Form College will rise to the challenge and make a significant contribution to life within each of our learning campuses.



STUDENT SUPPORT

STUDENT SUPPORT

As well as enjoying dedicated high quality teaching at the Knowsley Sixth Form College, each student is supported in a variety of ways to maximise their progress and help them plan for their careers beyond Sixth Form. The Connexions staff are also available to support students.

PERSONAL TUTORS

Every student will be allocated a Personal Tutor who is primarily concerned with their welfare and academic progress. The tutor will work with the students to provide advice and guidance and set personal targets.

Students' performance will also be monitored. In the case of any issues being identified support systems will be available to get students back on track.

PARENTAL CONTROL

As a sixth form student the onus is on you to be responsible for your own learning. However, we feel your parents/guardians are key to your success and so encourage an open flow of communication. As standard your parents/guardians should expect to receive regular progress and attendance information.

Parents Evenings are a vital part of our communication system between sixth form and your parents/guardians. It is at these events that they will have the chance to speak to tutors and find out details of how well you are progressing with your studies.

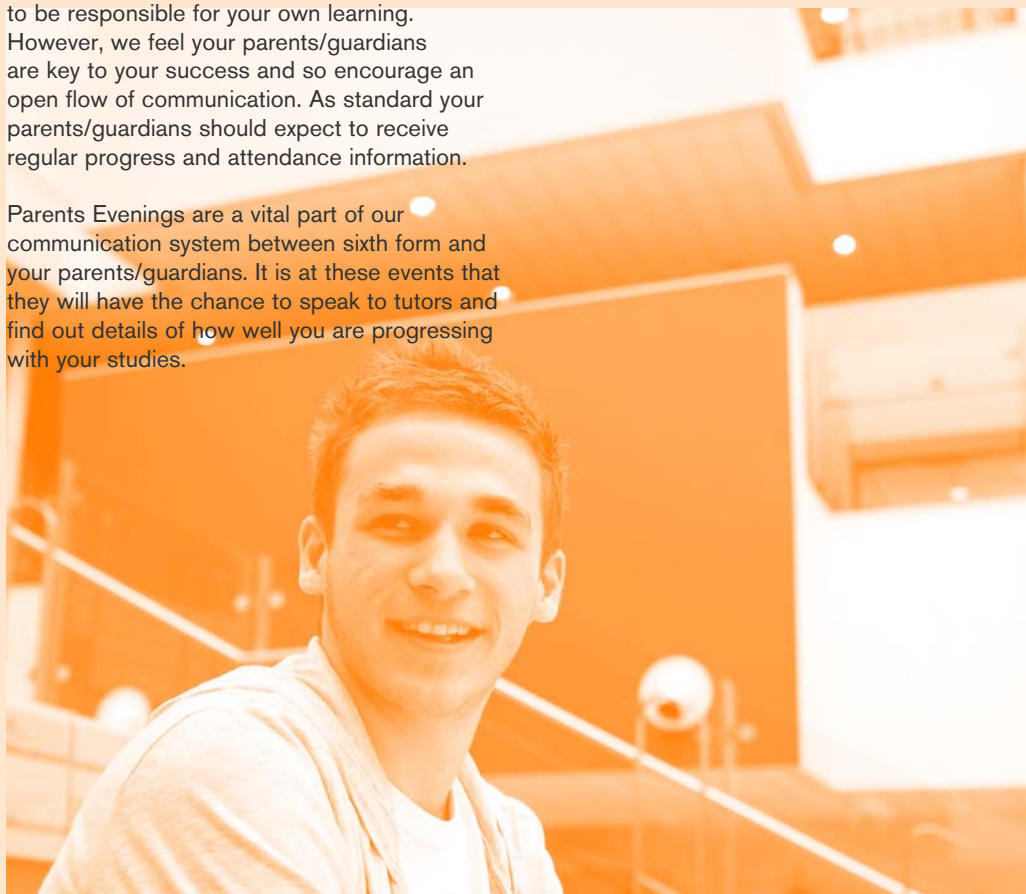
FINANCIAL SUPPORT

There are several sources of financial support for sixth form students. Provided by the Local Authority, some students may be eligible for Education Maintenance Allowance (EMA), a weekly payment of up to £30.

This is dependent upon your household income and is linked to attendance and performance in lessons. There are also bonuses of up to £100 if you remain on your course and make good progress with your learning. You can obtain further information concerning EMA by contacting:

EMA Helpline Tel No: 0800 121 8989
or www.direct.gov.uk/ema

If you are aged between 16 and 18, living in Knowsley and travel more than three miles to our college, you may also be entitled to help with travel expenses, books and equipment.





ENRICHM

ENRICHMENT

At our three Knowsley Sixth Form College campuses we offer a wide range of extra curricular and enrichment activities to help students get the most out of their time here.

In a competitive environment Universities and Employers are looking for applicants who have been active in developing new hobbies and interests.

But it's not just about participation looking good on your CV (which it clearly will), it's also about making new friends, having a great time, trying out new things and leaving Sixth Form College with some special memories.

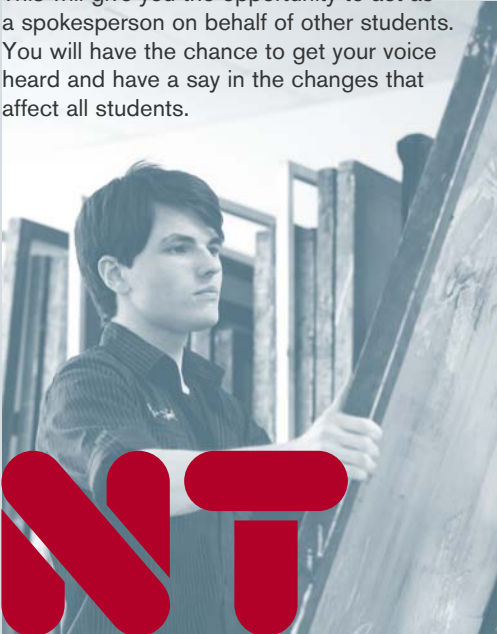
Some examples of the activities across the campuses are:

THE DUKE OF EDINBURGH AWARD

The Duke of Edinburgh is a popular enrichment activity offered at the Knowsley Sixth Form College. If you like a challenge which is rewarding this could be the enrichment choice for you.

SIXTH FORM COUNCIL/STUDENT REP

This will give you the opportunity to act as a spokesperson on behalf of other students. You will have the chance to get your voice heard and have a say in the changes that affect all students.



NEXT STEP PROGRAMME

The aim of this programme is to help students prepare for higher education or employment. Information is available on a wide range of issues such as choosing a university course, how to fill out UCAS online applications, money management and accommodation. We also address alternatives to higher education with advice on career pathways, GAP year projects and the study skills necessary to make a success of further choices.

SOCIAL EVENTS

There will be a number of social activities and events that you can participate in. Throughout the year we organise personal development and team building activities, charity events, student balls, shopping trips and much more.

SUBJECT VISITS

To supplement your studies, departments also run a number of curriculum enrichment activities. These might include subject specific masterclasses and conferences in venues across the country and sometimes further afield.

ENT

WHAT DO I NEED TO KNOW WHEN CHOOSING A SIXTH FORM COURSE?

There are a varied range of courses and activities on offer to you if you join Knowsley Sixth Form College, so there is something for everyone. We will help you find the course combination that is right for you.

AS/A LEVEL COURSES

All A Levels are two year courses. With successful completion of the required modules in the first year, you will achieve an AS (Advanced Subsidiary) award, a qualification in its own right. In the second year the course is called an A2 qualification. An AS plus an A2 course is an A Level qualification.

ADVANCED DIPLOMA (LEVEL 3)

The Level 3 Advanced Diploma courses allow students to learn through theory and practice. So as well as finding out about things from books and people, you will get to apply this knowledge by doing things in a practical environment.

BTEC LEVEL 3 DIPLOMAS

BTEC Level 3 courses are recognised by employers and universities as being of equal value to A Levels. These courses often involve more practical than theory-based learning, and focus on a specific career-related area. Studied over two years, these courses seek to develop specific skills, knowledge and personal qualities, which are valued highly by employers and applicable to related degree level courses at university.

Entry requirements for A Level, Advanced Diplomas and BTEC Level 3 Diplomas:

To become an Advanced Level student at Knowsley Sixth Form College, you must have achieved:

Either 5 or more GCSEs, Grade C or better (including English and two other main National Curriculum subjects).

Or 3 or more GCSEs, Grade C or better (English must be one of these GCSEs), with a BTEC First Diploma.

Or other Intermediate qualifications (including English, plus one National Curriculum subject).

Please note:
Some subjects may have more specific entry requirements. Please see individual course outlines for further details.

All students who reach these entry qualifications will be considered for a place on their sixth form course. All other students will be offered suitable alternatives following appropriate guidance.

BTEC LEVEL 2 DIPLOMA

These are intermediate or Level 2 courses, which are equivalent to four GCSEs Grade A*-C. There is no formal entry requirement for these courses, however students must display a willingness to learn and broaden their Level 2 (GCSE) achievement. Level 2 courses are a full-time programme, so students will not be expected to study any additional subjects.

DISCLAIMER

Whilst every effort is made to keep our course factsheets up to date, all courses can be subject to occasional changes in specification, and all courses require a minimum number of enrolments in order to run.

Entry Requirements may, from time to time, change between publication and enrolment. Any changes will be communicated clearly at the enrolment stage.

WHAT I NEED TO KNOW

Applications are accepted at any stage of the school year, but early application is strongly advised as some popular subjects quickly reach maximum numbers. For further information about Knowsley Sixth Form College, visit our website at www.knowsley.gov.uk/sixthformcollege

Many sixth form students are University bound, but are often not 100% certain about their career path. Studying at Knowsley Sixth Form College will give you the chance to participate in a variety of subjects, and give you a better idea of which Degree course you would like to take. So long as you demonstrate good grades in your A Levels, a place at University can be yours.

WHAT ADVICE CAN YOU GIVE ME ON CHOOSING MY COURSE?

A Levels allow you to study a variety of subjects and may be the best choice for you if you are unsure of your chosen career path. BTEC qualifications are more vocationally orientated and are equally accepted by Universities.

Your predicted grades at GCSE will provide a good pointer to your strong and weak subjects. Do you perform better in the Maths and Science subjects, or in the English and Humanities subjects? Remember that BTEC and A Level Sciences have a strong Mathematical element and that you should have gained a good GCSE pass in Maths and Science before considering taking one or more Science A Levels.

HOW MANY A LEVEL SUBJECTS WILL I STUDY IN THE FIRST YEAR?

Depending on your GCSE results, you will be advised to study three or four subjects in Year One. It's normal to drop from four to three subjects in Year Two, although that's up to you. After an in depth review following your AS results, you'll be able to decide the next step for your studies. Also note that subjects like Psychology, Sociology and Law involve a great deal of essay writing at A Level. If considering such subjects, the grade you get in GCSE English will be very important.

WHEN WILL I NEED TO MAKE A DECISION?

Just before starting your Advanced Level course, you will have a second or final interview with a member of staff. At this point, your interviewer will go through your GCSE results, your career ambitions and your other interests and then advise you on the next steps. We want to be sure you'll be happy on your course and will settle into it quickly.

Now is the time to consider carefully what courses to choose. At Advanced Level, what you study now can be very important in determining your future studies or your career direction. Many Universities require specific combinations for certain Degree programmes. Use your initial and final interview to discuss your options with our lecturers and advisers who will help you to choose the right programme of study.

WHAT IF THE SUBJECTS I CHOOSE ARE NOT RIGHT FOR ME OR I CHANGE MY MIND?

'Right Choice' is a process that lets you change to another course if you wish, with little interruption. An individual interview with your Personal Tutor is arranged where you review your subjects. At that meeting, if you decide to switch, your tutor will help you to make a quick and smooth transition to your new study programme.

EXTENDED PROJECT

The Extended Project is a brand new qualification which allows you to undertake a project to enhance your studies or explore a new area of interest. You will research a topic and produce a written report on your chosen theme. The finished project is worth UCAS tariff points at AS Level.



ALL SAINTS CATHOLIC CENTRE FOR LEARNING

A LEVEL

English Combined
Fine Art
Mathematics
Philosophy
Product Design
Textiles

BTEC

Applied Science (Level 3)
Business (Level 3)
Creative Media Production (Level 3)
ICT (Level 3)
Sport (Level 3)

DIPLOMA

Business, Administration and
Finance Advanced Diploma

OTHER AWARDS

Award in Extended Project
Institute of Financial Services Certificate

OUR CAMPUSES

HALEWOOD CENTRE FOR LEARNING

A LEVEL

Biology
Business (Applied)
Chemistry
Dance
Drama and Theatre Studies
English Language
English Literature
Fine Art
French
Geography
Graphic Design
History
ICT
Mathematics
Media Studies
Philosophy and Ethics
Physics
Product Design
Psychology
Textiles

BTEC

Business (Level 2)
Music (Level 3)
Sport (Level 3)

DIPLOMA

Creative and Media Advanced Diploma

OTHER AWARDS

Award in Extended Project

ROBY SIXTH FORM CENTRE

A LEVEL

Accounting
Biology
Business Studies
Chemistry
Communication and Cultural Studies
English Language
English Literature
Film Studies
Fine Art
French
German
Government and Politics
Graphic Design
History
Human Biology
ICT
Law
Mathematics
Media Studies
Physical Education
Psychology
Religious Education
Sociology
Spanish
Statistics

BTEC

Applied Science (Level 3)
Law (Level 3)
Music Technology (Level 3)
Sport (Development, Coaching and Fitness) (Level 3)
Performing Arts (Level 3)
Uniformed Public Services (Level 3)

DIPLOMA

Creative and Media Advanced Diploma
Engineering Advanced Diploma - Kirkby Campus
Hospitality Advanced Diploma - Kirkby Campus

OTHER AWARDS

Award in Extended Project
VTCT Diploma in Sports and
Fitness Therapy Techniques

"I have really enjoyed studying Media in the Sixth Form. The Advanced Diploma is a varied course and we cover everything from film editing to designing websites. I'd say Knowsley Sixth Form is unique – what other College offers the same variety of opportunities?"

ANDREW SEDDON (LEFT),

Creative and Media Advanced Diploma student,
Roby Sixth Form Centre

"I have had a great time studying at Roby Sixth Form. Alongside my A Levels I have volunteered with the College-based radio station – KCC Live FM – which has given me loads of new skills I can take forward to my future career. The best thing about Sixth Form is the people, there is a sociable atmosphere and people tend to work together."

ADAM GREEN (RIGHT),

A Level student, Roby Sixth Form Centre

STUDENT SOUNDBITES



“When we arrived at All Saints from our native Nigeria in 2007 we were nervous and worried about how we would be accepted. Within hours of being in Sixth Form we were made to feel at home and our fellow students made us feel welcome. We had always had a passion to study at University. The wide range of courses on offer at All Saints made this dream a reality as we were guided through the UCAS application process and made aware of what we needed to apply (and be accepted at University)”.

Abigail - “I have worked very hard during my time in Sixth Form and have been rewarded by gaining the highest ever UCAS points tally for All Saints Sixth Form. This has given me the opportunity to gain a place at Cumbria University studying Physiotherapy.”

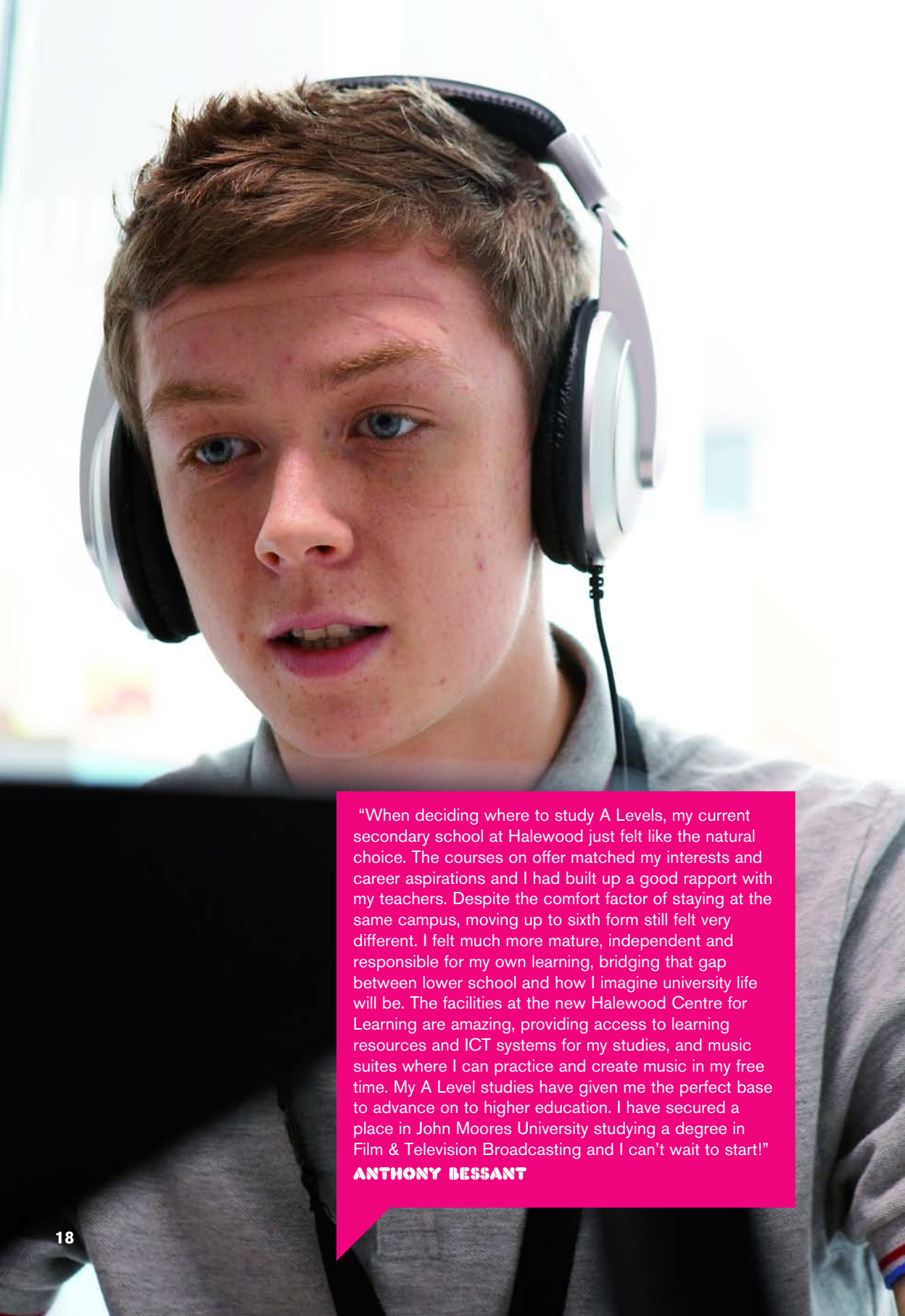
Elizabeth - “Studying at Sixth Form in Knowsley has given me the chance to fulfil my dreams of going to University. I have gained the sufficient marks in my BTECs and A Levels to gain a place at Cardiff Uni, studying Occupational Therapy”.

ABIGAIL AND ELIZABETH ADEDOYIN

Abigail studied Finance (Level 3 Certificate and Diploma), Health and Social Care (A Level) and Sport Level 3 BTEC (2 A Level Equivalent).

Elizabeth studied Finance (Level 3 Certificate and Diploma), Applied Science (A Level), Double Business Level 3 BTEC (2 A Level Equivalent) and ICT Level 3 BTEC (1 A Level).





"When deciding where to study A Levels, my current secondary school at Halewood just felt like the natural choice. The courses on offer matched my interests and career aspirations and I had built up a good rapport with my teachers. Despite the comfort factor of staying at the same campus, moving up to sixth form still felt very different. I felt much more mature, independent and responsible for my own learning, bridging that gap between lower school and how I imagine university life will be. The facilities at the new Halewood Centre for Learning are amazing, providing access to learning resources and ICT systems for my studies, and music suites where I can practice and create music in my free time. My A Level studies have given me the perfect base to advance on to higher education. I have secured a place in John Moores University studying a degree in Film & Television Broadcasting and I can't wait to start!"

ANTHONY BESSANT

OUR COURSES

A LEVEL ACCOUNTING

Course Overview

The subject lays an appropriate foundation for further studies in Accountancy either at Degree Level, or through the Professional Accountancy Bodies which include AAT, ICAEW, CIMA, ACCA, CIPFA. The course introduces students to the processes involved in the recording of financial transactions and information, the presentation of financial information to stakeholders such as investors and financial institutions, and the preparation of information for management decision making.

Entry Requirements

5 GCSEs at Grade C or above, including English and Maths.

Modules Include

Introduction to Financial Accounting (AS)

Financial and Management Accounting (AS)

Further Aspects of Financial Accounting (A2)

Further Aspects of Management Accounting (A2)

Assessment

You will be assessed by an examination in each module. This course will give you underpinning knowledge and understanding across a range of accountancy topics, skills in analysis and problem-solving, and in the communication of accounting information.

Progression

Honours Degree in Accounting. Foundation Degree in Accounting. Professional qualifications such as AAT, ICAEW, CIMA, ACCA, CIPFA. Employment in an accounting role.

A LEVEL BIOLOGY

Course Overview

This course introduces important biological concepts about how organisms function and interact, as well as reflecting new developments in biology and health. It is very current, and also develops practical, communication and mathematical skills. During the first year we study two examinable modules and do three coursework tasks in College. Successful AS students can progress onto A2, where two more modules and three further coursework tasks are completed.

Entry Requirements

5 GCSEs at Grade C or above, including English, Maths and Science. Students studying BTEC Sciences will be expected to achieve a distinction.

Modules Include

Cells, Exchange and Transport Molecules, Biodiversity, Food and Health

Practical Skills in Biology 1

Communications, Homeostasis and Energy

Control, Genomes and Environment

Practical Skills in Biology 2

Assessment

Your final grade will depend on the results of two examinations and practical tasks in each academic year. You will be expected to show understanding of complex biological concepts and apply your knowledge to new situations.

Progression

This course supports progression to University in order to study science and health-based courses such as Biology, Biomedical Science, Nursing, Forensics, Sports, Psychology etc. There are many interesting career paths for people with A Level Biology.

A LEVEL BUSINESS STUDIES

Course Overview

The subject lays an appropriate foundation for the further study of Business Studies or related subjects in employment or Higher Education. The course will introduce students to an awareness of how business works, its environment, the structure and practice of business at a local, regional, national and international level.

Entry Requirements

5 GCSEs at Grade C or above, including English and Maths.

Modules Include

Planning and Financing a Business

Managing a Business

Strategies for Success

The Business Environment and Managing Change

Assessment

You will be assessed through examination. Knowledge and comprehension, application and analysis, and problem solving are key aspects of the examination.

Progression

Degree level at University, or working within a business environment are options for further progression.

A LEVEL BUSINESS (APPLIED)

Course Overview

This A Level course is designed to stimulate and sustain students' interest in, and enjoyment of business, whilst enabling students to gain knowledge, understanding and skills required for future employment in business. It will also help develop students' ability to acquire knowledge by means of practical work, foster imaginative and critical thinking and develop an understanding of the world of business and recognition of its value to the local and national economy.

Entry Requirements

Students should have one or more of the following:-

BTEC First Diploma in Business, or a related Level 2 course (at Merit/Distinction) as well as a minimum of 3 GCSEs at Grade C or above.

A minimum of 5 GCSEs at Grades A-C, including English and Maths.

Modules Include

Investigating People at Work

Investigating Business

Investigating Marketing

Business Development

Managing & Developing People

External Influences on Business

Assessment

You will be continually assessed over the duration of the course. Assessments will take the form of external examinations and course assessment.

Progression

Students can progress into higher education where they can take a wide range of business related courses at Degree level in universities across the country. This course provides a good basis for any pupil wishing to pursue a career in any form of business or management field.

A LEVEL CHEMISTRY

Course Overview

The aim of the course is to develop students' interest in and enthusiasm for chemistry and appreciate its importance to society. The course places an emphasis on relevance to everyday life, green issues and economic awareness.

Entry Requirements

5 GCSEs at Grade C or above, including English, Maths and Science. Students studying BTEC Sciences will be expected to achieve a Distinction.

Modules Include

F321 - Atoms, Bonds and Groups, Atoms and Reactions

F322 - Chains, Energy and Resources

F323 - Practical Skills in Chemistry 1

F324 - Rings, Polymers and Analysis

F325 - Equilibria, Energetics and Elements

F326 - Practical Skills in Chemistry 2

Assessment

Two units at AS and A2 Level are assessed through written examination. The Practical Skills units at AS and A2 Level are assessed through internal assessment. Written exams are available in January and June.

Progression

A Level Chemistry is essential if you plan to study the subject at University and if you are interested in Medicine, Dentistry and Pharmacy. Chemistry combines with the other Sciences and Maths to give a wide choice of Degree courses and careers.

A LEVEL COMMUNICATION & CULTURAL STUDIES

Course Overview

Communication and Cultural Studies is about how you interact with people, how you exchange ideas, how you influence others and are influenced yourself. It is a study of the different influences that come from your family, education, the mass media and your peers. This course will give you an insight into how your culture has shaped your identity by analysing a variety of cultural images and artefacts. We also look at how you present yourself through your body language, clothing, choice of friends and interests.

Entry Requirements

5 GCSEs at Grade C or above, including English.

Modules Include

Understanding Communication and Culture

The Individual and Contemporary Culture: Portfolio

Communicating Culture

Communication and Culture in Practice: Portfolio

Assessment

The course is assessed through both coursework and examinations. At both levels you sit one exam and produce one portfolio of coursework, both of which are worth 50%.

Progression

Communication and Cultural Studies offers you excellent transferable skills and can open many opportunities for you. If you're interested in Marketing, Public Relations, Advertising and Journalism as a career then you'll have made the perfect start.

A LEVEL DANCE

Course Overview

The new A Level in dance will give students an understanding of all aspects of the subject and allow them to specialise in performance. Whilst developing their own skills students will gain insights into the nature of the industry. There are no written exams and assessment is solely through portfolio and performance, which are internally assessed and externally moderated.

Entry Requirements

5 GCSEs at Grade C or above.

Grade C GCSE in Dance or another art form

Grade C in English

An interest in Dance

Modules Include

AS:Developing Skills for Performance

Planning for an Event

Performing to a Commission

A2: Employment opportunities in Performing Arts

Advanced Performance Practice

Production Delivery

Assessment

You will be continually assessed over the two year course. Assessment will take the form of portfolio, written reports and performances. All students will also be given a role within the performance production team, such as stage manager, and assessed on their performance in this role. Students also take part in the Dance Leaders Award.

Progression

This is an enjoyable course in its own right, but it naturally leads into courses at Higher Education.

A LEVEL DRAMA & THEATRE STUDIES

Course Overview

You will explore a wide range of theatre and drama styles. You will study playwrights, while developing your analytical abilities to become an informed critic. The course includes the opportunity to work with professional theatre practitioners, participate in performances, devise your own performances, develop technical theatre skills and visit the theatre. You will also have the opportunity to help run extra curricular activities, such as Drama Club and working on productions.

Entry Requirements

5 GCSEs at Grade C or above.

Students should have a Grade C or above in Drama or English and be well motivated. For students who did not study Drama at GCSE an interview will be expected at this level. Interviews will take place between March – April.

Modules Include

AS: Exploration of Drama & Theatre
Theatre text in Performance

A2: Exploration of Dramatic Performance
Theatre text in context

Assessment

You will be continually assessed over the two year course. At AS Level assessment will take the form of two practical performances, one group piece and a choice of a monologue and duologue. Exploration notes and theatre review form part of the course work. At A2 assessment is through an externally assessed examination, written coursework and practical exploration of a variety of texts.

Progression

Drama A Level course can lead to further study at University or any course at Higher Education as it will give you the confidence and communication skills to make a success of any future studies.

A LEVEL ENGLISH LANGUAGE

Course Overview

The course will explore a wide variety of aspects of English Language, including the study of grammar, the way we learn language as children, how we use language in communicating with others, and how English developed historically. You will learn how to produce your own writing in an examination setting.

Entry Requirements

5 GCSEs at Grade C or above, including GCSE English Language usually at Grade B or above.

Modules Include

Language Variation and Change

Acquisition and Representation

Writing for Specific Purposes and Readers

Interacting through Language

Investigation of an Aspect of Language Use

Assessment

You will be assessed through examinations and coursework.

Progression

This course leads to a wide range of Degree options, as well as varied career opportunities. For example: teaching, journalism, law, marketing, publishing, Civil Service and many other career routes.

A LEVEL ENGLISH LITERATURE

Course Overview

The course is ideal for students who love to read and discuss life's questions. This year's topic is The Struggle for Identity in Modern Literature. We will be engaging in questions of what makes us who we are, and how the modern writer presents this. You will need a desire to read and discuss some of the great literature of the present day in response to the themes of: love, war, sex, class, racism, gender, politics and religion.

Entry Requirements

5 GCSEs at Grade C or above, including GCSE English Language & Literature usually at Grade B or above.

Modules Include

One poetry text - concerning the struggle for identity in modern literature.

Creative Study Coursework - Coursework is 40% of this course and consists of a folder of work on a novel and a play related to the theme.

Assessment

You will be assessed over the two years by 40% coursework and 60% written examinations, requiring full-length essay-type responses.

Progression

Higher Education courses in either English Language or Literature, leading to possible careers in: journalism, teaching, Civil Service, publishing houses, advertising agencies, and a wide range of other careers.

A LEVEL ENGLISH LITERATURE & ENGLISH LANGUAGE (COMBINED)

Course Overview

This course is designed to encourage candidates to:

use integrated linguistic and literary approaches in their reading and interpretation of texts

engage creatively and independently with a wide range of spoken, written and multimodal texts, exploring the relationships between texts

undertake independent and sustained studies to develop their skills as producers and interpreters of language.

Entry Requirements

5 GCSEs including Maths and English. A Grade B is expected in English Language GCSE.

Modules Include

At AS, candidates study language and literature using an Anthology of literary and non-literary texts and a chosen set of paired texts. Further study focuses upon the ways in which different writers have approached similar subjects and the ways in which language and style are affected by change over time and contextual variation:

Unit 1: Introduction to Language and Literature Study

Unit 2: Themes in Language and Literature.

Assessment

Coursework and exam based.

Progression

Various career paths using the skills obtained in Journalism, writing, etc. Undergraduate Degrees in related subjects.

A LEVEL FILM STUDIES

Course Overview

A systematic study of cinema and film, including film criticism and informed film study. It takes film to be amongst the most significant of the mass media and art forms. You will study popular cinema (Hollywood), film form, narrative and other aspects of cinema as an institution. British film is also studied, as is the context, past and present of film.

Entry Requirements

5 GCSEs at Grade C or above, including English.

Modules Include

Messages and Values (British and Irish cinema)

Making Meaning (film form and spectatorship)

Making Meaning 2 (research of own film)

Studies in World Cinema

Critical Studies (experimental, specialist and shocking cinema)

Producers and Audiences (Hollywood cinema)

Assessment

You will be assessed through two written examinations, and one piece of coursework, which involves the study of a genre or director, by discussion with tutor.

Progression

This course can lead to a Degree in film, media and culture, including practical film-making. It offers many career opportunities behind the camera from camera operative, lighting and sound engineer through to creative film maker and admin roles.

A LEVEL FINE ART

Course Overview

Fine Art is used as a term for the expressive arts as opposed to applied or decorative arts or arts connected with function and utility. Within this course you will experience a wide range of media and have the opportunity to work in drawing, painting, printmaking, installation sculpture, mixed media, lens and light-based media and new media that includes ICT and alternative media. The development of ideas through sketchbooks is essential. It is an enjoyable course, with drawing trips and gallery visits being an important element of the course.

Entry Requirements

5 GCSEs at Grade C or above.

Students should have at least Grade C GCSE in Art & Design.

Modules Include

ART1 - One unit of coursework based on themes and subject matter developed from a given starting point and developed in a personal way.

ART2 - One unit that comprises of externally set assignment based on a visual or written stimulus. This is a two-part assignment with a controlled test of eight hours.

You will be expected to select, evaluate and present for assessment.

Assessment

You will be assessed through a combination of coursework portfolio and controlled assignments.

Progression

This course provides a firm foundation for anyone wishing to develop a career in the numerous creative industries, eg fine art, theatre design, fashion, textiles, graphic design, interior design, gallery and museum work, photography, etc.

A LEVEL FRENCH

Course Overview

A modular course developing skills in speaking, listening, reading and writing. You will have the opportunity to practice your oral skills in conversation classes. The use of IT is actively encouraged and the Sixth Form College subscribes to leading online courses and published journals.

Entry Requirements

5 GCSEs at Grade C or above, including English.

Modules Include

MEDIA - Television, Advertising, Communication technology.

POPULAR CULTURE - Cinema, Music, Fashion/trends.

HEALTHY LIVING/LIFESTYLE - Sport/exercise, Health and Well-being, Holidays.

FAMILY/RELATIONSHIPS - Relationships within the family, Friendships, Marriage/partnerships.

Assessment

You will be assessed through one oral exam of 15 mins duration, and one written exam of 2.5 hours, which will include one essay-type question.

Progression

Success at Advanced Level normally leads to a course in Higher Education. A Degree in Modern Languages can lead to careers in: teaching, translating, Civil Service, and many branches of industry, commerce law, and the armed forces.

A LEVEL GEOGRAPHY

Course Overview

A Level Geography provides the opportunity to study contemporary events which candidates will be able to relate to the everyday world in which they live. As well as examining some Physical geography, Human Elements look at issues such as global warming, crime, the spread and impact of AIDS, distribution of racial tension and violence. Students examine the issues and suggest solutions. Students have opportunities to question the world around them and assess proposals for change. All of the work is supported by the use of ICT resources and field trips.

Entry Requirements

5 GCSEs at Grade C or above.

GCSE Geography is not necessarily required. Students should have a Grade C or above in Science or one of the Humanities subjects.

Modules Include

AS: Physical and Human Geography
Applied Geography

A2: Contemporary Geographical Issues
Geography Fieldwork Investigation

Assessment

Final grades will depend on results of two examinations in the first year and either two exams or one exam and one piece of coursework in the final year. Examinations are designed to demonstrate knowledge and understanding of the content, concepts and processes; analyse interpret and evaluate geographical information and apply understanding in unfamiliar contexts. Students will also select and use a variety of methods, skills and techniques to investigate issues, research conclusion and communicate findings.

Progression

Higher Education in Leisure & Tourism, Environmental Studies, Planning, Social Policy, Education, Construction Industry, Social Work, Local Government, Criminology, Journalism.

A LEVEL GERMAN

Course Overview

A modular course developing skills in speaking, listening, reading and writing. You will have the opportunity to practice your oral skills in conversation classes. The use of IT is actively encouraged and the Sixth Form College subscribes to leading online courses and published journals.

Entry Requirements

5 GCSEs at Grade C or above, including English and Maths.

Modules Include

MEDIA - Television, Advertising,
Communication technology

HEALTHY LIVING/LIFESTYLE -
Sport/Exercise, Health and Well-being,
Holidays.

POPULAR CULTURE - Cinema, Music,
Fashion/trends.

FAMILY/RELATIONSHIPS - Relationships
within the family, Friendships,
Marriage/Partnerships.

Assessment

You will be assessed through one oral exam of 15 mins duration, and one written exam of 2.5 hours, which will include one essay-type question.

Progression

Success at Advanced Level normally leads to a course in Higher Education. A Degree in Modern Languages can lead to careers in: teaching, translating, Civil Service, and many branches of industry, commerce, law, and the armed forces.

A LEVEL GOVERNMENT & POLITICS

Course Overview

The first year of this course gives a comprehensive introduction to British Politics, including an examination of electoral systems, voting behavior, constitutional issues, the Executive and Europe. Year two examines the political ideologies of socialism, liberalism, conservatism and fascism. It continues with the government of the USA.

Entry Requirements

5 GCSEs at Grade C or above, including English.

Modules Include

People, Participation and Politics

Governing Modern Britain

Political Ideologies

The Government of the USA

Assessment

Assessment is exclusively via two written examinations at the end of the course. The questions will require short written responses, and longer essay-type answers.

Progression

The course can lead to a broad range of Degrees with a political slant. Careers include: journalism, local government and administration, teaching, parliamentary researcher, legal services, diplomatic service, advisory roles in business and industry.

A LEVEL GRAPHIC DESIGN

Course Overview

A wide range of Graphic Design applications will be taught and whereas the traditional applications of printmaking, painting and drawing will be the mainstay, students can choose from a wide range of possible approaches including Typography, Illustration and Web-based Media.

Entry Requirements

5 GCSEs at Grade C or above, including English.

Modules Include

Typography (the application of text to your designs)

Digital Manipulation of Photography

Contemporary Practice (the study of current Graphic Design)

Printmaking in our superb workshop facilities

Assessment

Students will be continually assessed at the end of each year; you will answer an exam question set by the examination board. You will be assessed on your ability to RESEARCH; DEVELOP your ideas; REALISE your ideas, and EVALUATE your outcomes.

Progression

Students can progress onto the Pre-degree course in Foundation Studies Diploma in Art and Design which prepares students of Art and Design for University application. The course at Knowsley Sixth Form College has a universally accepted reputation for placing students.

A LEVEL HISTORY

Course Overview

AS students will study two units. The first involves examining Tsarist Russia, 1855 - 1917. The second unit will study the impacts of the Vietnam War on the USA. A2 students will do a unit on the Making of Modern Britain, 1951 - 2007. In addition, students will produce one written assignment based on a study of a historical period.

Entry Requirements

5 GCSEs at Grade C or above, including English.

Modules Include

Tsarist Russia, 1855 - 1917

The USA and Vietnam

The Making of Modern Britain, 1951 - 2007

Historical Enquiry

Assessment

Assessment by examination in the first year will be two examinations of 1 hour 15 minutes duration each. In year 2, assessment is by one two hour exam and two 5000 word coursework assignments.

Progression

Gaining an A Level History qualification opens up a choice to study a wide variety of courses in Higher Education. It also opens up a considerable number of career opportunities in the public and private sectors.

A LEVEL HUMAN BIOLOGY

Course Overview

This course starts by using the blood to introduce important concepts about how the human body functions. This contextual theme continues through the course as well as introducing new developments in Biology and Health. During the first year we study two examinable modules and complete three coursework tasks. Successful AS students can progress on to A2 where two more modules and an extended practical investigation are completed.

Entry Requirements

5 GCSEs at Grade C or above, including English, Maths and Science.

Modules Include

Blood Circulation and Gas Exchange

Growth, Development and Disease

Practical Skills in Human Biology

Genetics, Homeostasis and Ageing

Energy, Control and Reproduction

Extended Coursework Task

Assessment

Your final grade will depend on the results of two examinations and practical activities in each academic year. You will be expected to show understanding of biological concepts and apply your knowledge. Communication and Maths skills are also developed.

Progression

This course supports progression to University in order to study science and health-based courses, such as Biology, Biomedical Science, Nursing, Sports, Psychology, etc, leading to careers in these areas.

A LEVEL INFORMATION & COMMUNICATION TECHNOLOGY

Course Overview

The aim of the course is to encourage candidates to develop an understanding of the fundamentals of Information Communication Technology and to provide both knowledge and skills suitable for participation in an evolving information-based society.

Candidates are given opportunities to develop interpersonal, academic and technical skills that will help them meet career challenges in a highly technological future.

Entry Requirements

5 GCSEs at Grade C or above, including English and ICT GCSE or equivalent.

Modules Include

Data, information, knowledge and processing

Software and hardware components of an information system

Characteristics of standard applications software

Spreadsheet and database concepts

Presentation and communication software

The role and impact of ICT

Assessment

One written exam which covers all of the theory. Questions are asked in a variety of ways, from short answers to essays (60%). Coursework - students work on this throughout the year; this is externally moderated (40%).

Progression

A wide range of IT-based Degree courses, leading to a vast range of potential careers in the world of business, finance, public administration, teaching, and data systems and processes.

A LEVEL LAW

Course Overview

Sessions will consist of lectures, group work, debates and research. You will be taught to apply the law, to write analytically and to solve problems, and to express your opinions and discuss those of others. The course will be complemented by a visit to court and other places of interest where appropriate.

Entry Requirements

5 GCSEs at Grade C or above, including English.

Modules Include

The English Legal System - this involves the study of legal systems such as the courts and the police. It also includes the study of legal personnel such as judges, solicitors and barristers.

Sources of Law - this involves looking at where law comes from, such as Parliament and the European Union.

Criminal Law - this involves the study of a variety of crimes, including murder, manslaughter and robbery.

Special Study Unit - this also concentrates on Criminal Law, but requires a link to be made with AS knowledge.

Assessment

Both AS and A2 are assessed entirely by written examination. There are two exams for each year. Throughout the course, you will be assessed in a variety of ways that will prepare you for the exams.

Progression

Many students go on to study Law Degrees, but the skills developed in law are a sound basis for any further study. Some students use the qualification to work in areas such as the courts, police, local government, business and finance.

A LEVEL MATHEMATICS

Course Overview

A Level Mathematics is a demanding course which requires a high level of mathematical and problem-solving skills. Students must be confident at using Algebra and must be prepared to spend a lot of time developing and practicing their skills. The AS course consists of three units: Core 1, Core 2 and Statistics 1. The A2 course contains Core 3, Core 4 and Mechanics 1.

Entry Requirements

5 GCSEs at Grade C or above, including GCSE Mathematics at Grade B or above.

Modules Include

Core 1 includes Co-ordinate Geometry, Quadratic Equations, Transforming Graphs and Differentiation.

Core 2 includes Trigonometry, Sequences and Series, Integration and Logarithms.

Core 3 includes more difficult Trigonometry and more complicated techniques for differentiating expressions.

Core 4 includes more complicated techniques for integrating functions, further Differentiation and Vectors.

Statistics 1 includes Correlation and Regression, Averages and Measures of Spread, and Probability.

Mechanics 1 includes studying Forces, Equations of Motion and Collisions.

Assessment

All units are externally assessed by a 90 minute written examination. No calculators can be used in the Core 1 exam. There is no requirement for coursework associated with any of the units.

Progression

A wide range of Maths-based Degree courses, leading to careers requiring statistical analysis and prediction and other mathematical and logical thinking skills, such as: teaching, costing, accounting, building and surveying.

A LEVEL MEDIA STUDIES

Course Overview

In the course modules you will study a wide range of films from the classics to the contemporary. You will also look at cutting edge documentaries including Docudrama, Reality TV and Docusoaps. Other topics include Soap Opera, Sit-Com, Police Drama and TV Serials. You will also be able to write, produce, direct and star in your own production using new media technologies. You will also study a wide range of printed media, including film posters, advertisements, newspapers and magazines.

Entry Requirements

Candidates need a minimum of 5 GCSEs at Grade C or above which must include GCSE English Language.

Modules Include

AS: Media Representations and responses. Media Production processes.

A2: Media Investigation and Production. Media Text, Industry and Audience.

Assessment

Final grades will depend on results from a mix of externally assessed examinations and internally assessed coursework.

Progression

University courses in Media, Film, Television and Journalism are the obvious links. If a career in the movies or TV is what you want this is the best place to start. Or if you just have a passion for film and TV then this is the course for you!

A LEVEL PHILOSOPHY

Course Overview

Have you ever sat quietly and asked yourself difficult questions like 'Does God exist', or 'Are we really free'? If you have, then you are philosophical by nature. But what is philosophy? What most people agree on is that philosophy is about using rational argument and logical thinking to shine some light on life's big questions. In doing so you'll get a greater understanding of the world we live in.

Entry Requirements

5 GCSEs including Maths and English.

Modules Include

In the first year (AS) you'll have an introduction to Philosophy. Part 1 includes subjects like 'The idea of God, and 'Why should I be moral?'. Part 2 includes 'Realism and idealism' and 'Free will and determinism'. In year two, the first topic is 'Key themes in Philosophy'. Here you will explore Moral and Religious Philosophy, along with Political Philosophy. The second topic is 'Philosophical Problems', where you will be introduced to some of the issues pondered by great philosophers over the years.

Assessment

In the first year you'll sit two 90 minute papers covering the content learned in Part 1 and Part 2, each paper contributing 50% of your marks for the year. In the second year you'll have two papers again, but this time the paper covering 'Key themes' accounts for 60% of your marks for the year, whilst 'Philosophical Problems' accounts for 40%.

Progression

Philosophy prepares students for a range of Degree courses. Popular destinations include Degree courses in medicine and nursing, psychology, law, journalism, humanities, sciences and the arts.

A LEVEL PHILOSOPHY & ETHICS

Course Overview

An exciting course, which focuses on the detailed study of key philosophical and ethical concepts and issues.

Philosophy of Religion – Students study the history of philosophy and its importance in a modern world and seek answers to some of life's big, ultimate questions.

Religious Ethics – In Religious Ethics students study a range of contemporary moral and ethical issues from philosophical secular and religious perspectives.

Entry Requirements

5 GCSEs at Grade C or above.

Grade C or higher in GCSE RE/Philosophy and Ethics. A passion for thinking and learning and a positive attitude and an open mind.

Modules Include

Both the AS and A2 syllabuses will be split between the Philosophy of Religion, and Religious Ethics.

Assessment

Assessment will take the form of two 90 minute written exams at the end of the first and second year, one examination for Philosophy and one for Ethics.

Progression

Students who have successfully completed this A Level have gone on to Higher Education to study subjects such as medicine and nursing, law, journalism, humanities, sciences and the arts.

A LEVEL PHYSICAL EDUCATION

Course Overview

The course will help enhance knowledge and increase understanding of the factors that affect performance and participation in physical education. Students will have the opportunity to experience and develop as a performer, coach and official. The course will address current contemporary issues in sport such as the impact of the upcoming Olympic Games in 2012, the use of technology in a variety of sports and increasing commercialisation of sport.

Entry Requirements

5 GCSEs at Grade C or above, including English, Science and preferably Maths.

Modules Include

Opportunities for and the effects of leading a healthy and active lifestyle

Analysis and evaluation of physical activity as a performer and/or in adopted roles

Optimising performance and evaluating contemporary issues in sport

Optimising practical performance in a competitive situation

Assessment

Assessment: Written paper, two hours: 60% of total AS Level marks. 40% practical assessment in two of the following: coaching, officiating and/or performance.

Progression

A Level Physical Education prepares students for a range of Degree courses, including Sports Science. Possible career paths include teaching, coaching, Public Services and the Armed Services.

A LEVEL PHYSICS

Course Overview

The full A Level consists of four taught modules. Each module includes a centre assessed practical exam and coursework.

Entry Requirements

5 GCSEs at Grade C or above including either:

GCSE Double Award Science at Grade BB, or higher tier at Grade CC

or GCSE Physics higher tier at Grade C or above.

BTEC Science students will be expected to have achieved a Distinction

Modules Include

AS: Particles, Quantum Phenomena and Electricity

Mechanics, Materials and Waves

Centre Assessed Practical Exam (investigative & practical skills)

A2: Fields and Further Mechanics

Section a) Nuclear and Thermal Physics
b) Optional Unit

Centre Assessed Practical Exam (investigative & practical skills)

Assessment

In the first year you will sit two externally assessed unit examinations, a centre assessed practical and a 1 hour practical exam. The second year will follow a similar format.

Progression

University for any choice of subject but especially Engineering and the Sciences.

A LEVEL PRODUCT DESIGN

Course Overview

Product Design allows students to develop a range of creative and technical skills through the design and manufacture of their own projects, developing knowledge and understanding of design, materials and technical processes. Students will also develop research, analysis, product development, project planning and evaluation skills.

Entry Requirements

5 A-C GCSEs or equivalent, including an Art, Science or Technology A*- C.

Modules Include

AS: Portfolio of Creative Skills

Design and Technology in Practice

A2: Designing for the future

Commercial design

Assessment

Students will be assessed through a combination of examination and portfolio work.

Progression

This course would help students who may be thinking of pursuing a career in design or manufacturing, all types of engineering, architecture or computer aided design.

A LEVEL PSYCHOLOGY

Course Overview

You will study explanations of human behaviour through various approaches. You will learn about research skills and use these skills to conduct psychological investigations. Lessons combine lectures, discussions, group and independent work. The course is demanding and requires high levels of English and Maths.

Entry Requirements

5 GCSEs at Grade C or above, including GCSE English Language usually at Grade B and GCSE Maths Grade C.

Modules Include

Perspectives - Approaches to studying Psychology.

Psychology of Gender - why do boys and girls behave differently?

Bio Psychology - the genetic basis of behaviour.

Social Influence - how do people influence and change other people's attitudes and behaviours?

Memory - How do we remember information and why do we forget?

Anxiety Disorders - Phobias and OCD.

Substance Abuse (Addiction, explanations and treatments).

Forensic Psychology (offender behaviour and treatment).

Child Development (attachments and friendships).

Approaches and Debates in Psychology.

Assessment

This course is assessed entirely by examination in January and May/June.

Progression

Psychology leads to a range of Degree courses and to careers including NHS professions, social work, personnel, police services, sports and psychological therapy, prison and forensic work.

A LEVEL RELIGIOUS STUDIES

Course Overview

This course will consider a variety of approaches and aspects of historical and contemporary critical thought about religion. An interest in issues relating to religion, philosophy and ethics, coupled with an open mind and a willingness to explore these issues critically are also essential for this course.

Entry Requirements

5 GCSEs at Grade C or above, including English.

Modules Include

Arguments relating to the existence of God

Religion and Science

Concepts of Ethics

Topical Issues in Ethics

Miracles

Creation versus Evolution

Quantum Mechanics and Religious

World Views

Assessment

AS candidates will be assessed by three 75 minute written papers. A2 candidates will undertake three additional 90 minute written exams.

Progression

This course can lead to a wide range of Degree courses, and to careers in the Church or other ministry, as well as in education, health, social work and the media.

A LEVEL SOCIOLOGY

Course Overview

The course explores the nature of society and its relationship to the individual through the study of social theory and its application to four areas of sociological interest. AS involves the study of socialisation, identity, methods and the family. A2 involves the study of crime and deviance, social inequality and methods. Sociology includes both knowledge and understanding as well as analytical and evaluative skills.

Entry Requirements

5 GCSEs at Grade C or above, including English.

Modules Include

Exploring Socialisation, Culture and Identity. Examines how identity is created through socialisation plus research methods.

Topics in Socialisation, Culture and Identity.

This will involve studying the modern family and how it has changed in recent decades.

Power and Control. This involves the study of crime and deviance.

Exploring Social Inequality and Difference. Covers social inequality in relation to social class, gender, ethnicity and age.

Assessment

The course is assessed by an examination for each unit taken in January or in May/June. There are also formative assignments that lead up to the examination in each unit.

Progression

Sociology is a well established A Level accepted at all universities for entry to Degree courses in a wide range of areas. It is relevant to a range of careers including teaching, research, personnel, business consultancy, marketing, social work, etc.

A LEVEL SPANISH

Course Overview

A modular course developing skills in speaking, listening, reading and writing. You will have the opportunity to practice your oral skills in conversation classes. The use of IT is actively encouraged and College subscribes to leading online courses and published journals.

Entry Requirements

5 GCSEs at Grade C or above, including English and Spanish.

Modules Include

MEDIA - Television, Advertising, Communication Technology

POPULAR CULTURE - Cinema, Music, Fashion/trends

HEALTHY LIVING/LIFESTYLE - Sports/Exercise, Health and Well-being, Holidays

FAMILY/RELATIONSHIPS - Relationships within the family, Friendships, Marriage/partnerships

Assessment

You will be assessed through one oral exam of 15 mins duration, and one written exam of 2.5 hours, which will include one essay-type question.

Progression

Success at Advanced Level normally leads to a course in Higher Education. A Degree in Modern Languages can lead to careers in: teaching, translating, Civil Service, and many branches of industry, commerce law, and the armed forces.

A LEVEL STATISTICS

Course Overview

Statistical techniques are now used throughout all modern business and industry for analysis of data and to help make decisions about the future. This course gives an understanding of some of these techniques and shows how to apply useful maths skills to real situations. It is particularly useful if you are studying Psychology, ICT, Business Studies, Economics, Geography or Biology.

Entry Requirements

5 GCSEs at Grade C or above, including English and Maths.

Modules Include

Numerical measures, Probability, Binomial Distribution, Normal Distribution, Estimation, Correlation and Regression. This module gives a solid foundation for studying statistics.

Time Series Analysis, Sampling, Discrete Probability Distributions, Interpretation of Data. Application of Hypothesis Testing. This module introduces hypothesis testing which will be used in further modules.

Application of Contingency Tables in Real-world situations, Distribution Free Methods, Correlation. Continuous Probability Distributions, Distributional Approximations, Estimation in a Real-world Context, Application of Hypothesis Testing.

The Rectangular and Exponential Distributions. Confidence intervals for variance and standard deviation. More Hypothesis Testing.

Experimental Design, Analysis of Variance, Statistical Process Control, Acceptance Sampling.

Assessment

The course is assessed by module examinations with three examinations in each year.

Progression

This course underpins a wide range of academic disciplines, and can lead to careers in industry, commerce, banking, retail, marketing, data analysis, research and forecasting.

A LEVEL TEXTILES

Course Overview

The course allows students to develop high levels of skills within the field of fashion and creative textiles. As well as developing specialist skills there is an opportunity to develop an interdisciplinary approach to the work through constructed, embellished, printed, sewn and dyed methods of textile design.

Students are taught to develop ideas through experimentation and sketchbooks. It is an enjoyable course, with field trips and gallery visits being an important element of the course.

Entry Requirements

5 GCSEs at Grade C or above.

At least Grade C GCSE in Art & Design, Textile Technology or Graphics.

Modules Include

ART1 - One unit of coursework based on themes and subject matter developed from a given starting point and developed in a personal way.

ART2 - One unit that comprises of an externally set assignment based on a visual or written stimulus. This is a two part assignment with a controlled test of eight hours.

You will be expected to select, evaluate and present for assessment.

Assessment

ART1 Unit 1 Coursework Portfolio to be completed by the end of January.

ART2 Unit 2 Art & Design Controlled Assignment to be externally set on 1st February. Controlled test to take place in April.

Progression

This course provides a firm foundation for anyone wishing to develop a career in the numerous creative industries e.g. theatre design, fashion, textiles, graphic design, interior design, fine art, gallery and museum work, photography.

ADVANCED DIPLOMA IN BUSINESS, ADMINISTRATION & FINANCE

The Advanced Diploma is equivalent to 420 UCAS points (3.5 A Levels)

Course Overview

This qualification gives you an understanding of the essential knowledge and skills needed to help you begin or progress in a broad range of business and financial careers.

Entry Requirements

5 GCSEs including Maths and English

Modules Include

Business Enterprise
Business Administration and Events
Personal Finance and Financial Services
Business Finance and Accounting
Marketing and Sales in Business
Customer Service in Business
Teams and Communication in Business
Responding to Change in Business
Corporate Social Responsibility
Careers and Employment in Business

Assessment

This diploma will be assessed through external examinations and internally marked assignments.

Progression

Employment in the Business and Finance world or further study at a higher level, eg Business related Undergraduate Degree Course.

ADVANCED DIPLOMA IN CREATIVE & MEDIA

The Advanced Diploma is equivalent to 420 UCAS points (3.5 A Levels)

Course Overview

Your study on this course involves completing 6 units that combine various media skills and techniques, including areas of research, design, pre/post production and evaluation. Two specialist routes can also be followed (traditional & interactive).

Entry Requirements

5 GCSEs including English at Grade C or above, and show evidence of Creative and Media involvement. Equivalent qualifications may be considered in some cases.

Modules Include

Capture: capturing resources and creating a multimedia/media product

Show: planning for and managing an exhibition of your own work

Interaction: interacting with an event or taking part in an event

Commission: producing an interactive DVD for a company

Investigation: undertake an individually negotiated research project based on a practitioner/maker

Evaluation: personal review and reflection of the investigation

Work Placement: liaising with employers, colleagues and tutors to produce a media end product.

Assessment

Assessment is via a portfolio of preparatory work, production and observations. The first four units are internally assessed, units five and six are externally assessed.

Progression

You can progress to Degree level study or employment.

ADVANCED DIPLOMA IN ENGINEERING

The Advanced Diploma is equivalent to 420 UCAS points (3.5 A Levels)

Course Overview

This course looks at different aspects of engineering through the Principal learning units. All learners will also complete an extended project and will have to choose a further subject to study called ASL (Additional and Specialist Learning). This extra subject can be engineering related or from another curriculum area.

Entry Requirements

GCSE Mathematics (B), English (C), Science (CC). Personal recommendation from teacher; however the learner must be seen to be on target to progress.

Modules Include

Investigating Engineering Business and the Environment

Applications of Computer Aided Designing

Selection and Application of Engineering Materials

Instrumentation and Control Engineering

Maintaining Engineering Plant, Equipment and Systems

Investigating Modern Manufacturing Techniques used in Engineering

Innovative Design and Enterprise

Mathematical Techniques and Applications for Engineers

Principles and Applications of Engineering Science

Assessment

There are nine units of which seven are internally assessed and two externally assessed.

Progression

This qualification can lead to University entry.

ADVANCED DIPLOMA IN HOSPITALITY

The Advanced Diploma is equivalent to 420 UCAS points (3.5 A Levels)

Course Overview

A Diploma in Hospitality gives you a taste of the huge range of options available to you in this fast moving industry. The Diploma teaches you what you need to know to set up and run your own business, you will also get an insight into the industry. You will learn the importance of creating a good impression through good customer service. The industry is about working with people and communicating effectively so you will develop other important skills such as team working and self-managing.

Entry Requirements

GCSE Mathematics (B), English (C), Science (CC). Personal recommendation from teacher; however the learner must be seen to be on target to progress.

Modules Include

Investigating the hospitality industry

Law and procedures in the hospitality industry

Customer service standards in the hospitality industry

Building and developing effective hospitality teams

Managing people in the hospitality industry

Finance and budgetary control in the hospitality industry

Sales and marketing in the hospitality industry

Running a hospitality business

Assessment

The assessment takes place as two externally set tests and eight internally set, marked assignments. These are then externally moderated.

Progression

This course will provide you with the skills to progress in a career in the hospitality industry at a supervisory level or onto University.

BTEC LEVEL 2 DIPLOMA IN BUSINESS

(formerly known as BTEC Level 2 First Diploma) (4 GCSE grades at A*-C equivalent)

Course Overview

The course is designed to provide students with knowledge, understanding and skills required for future employment, or study, in business. It aims to stimulate and sustain students' interest in, and enjoyment of, business and provide an appropriate course for students wishing to enter employment in business, or to continue with further education.

Entry Requirements

Students who are likely to benefit most, should have one or more of the following:

A suitable standard of literacy and numeracy supported by a general education, including English and Maths, equivalent to GCSE at Grades D to G.

An interest in pursuing a career in Business.

Modules Include

Business Purposes
Business Organisations
Financial Forecasting for Business
People in Organisations
Customer Relations in Business
Business Online
Managing Personal Finances

Assessment

Your BTEC work is assessed by continuous assessment. Assignments are set regularly and you will be awarded Pass, Merit or Distinction Grades.

Progression

This is a full time programme, designed for students who need to improve their Level 2 (GCSE) achievement. Students gaining this qualification, in conjunction with Grade C or above in English Language and Maths, will be able to progress on to Level 3 courses. Alternatively, students can go into a related employment field.

BTEC LEVEL 3 SUBSIDIARY DIPLOMA IN APPLIED SCIENCE

(formerly known as BTEC National Award)
(1 A Level equivalent)

Course Overview

The qualification will give an understanding of the essential skills and attitudes to begin a professional career or move on to further education. Employment opportunities available to science technicians and other fields of employment will be highlighted. The course is designed to be flexible so that it can reflect individual interests and career aspirations and it consists of three core units plus a choice of specialist units.

Entry Requirements

At least 5 GCSEs at Grade C or Level 2 equivalents, one of which must be English and either a Grade C in GCSE Science or BTEC Level 2 certificate in Applied Science.

Modules Include

Three core units: Fundamentals of Science, Scientific Practical Techniques and Working in the Science Industry plus a choice of three specialist units from either the Applied Biology or Forensics pathway.

Assessment

Your BTEC work is assessed by continuous assessment. Assignments are set regularly and you will be awarded Pass, Merit or Distinction Grades.

Progression

The BTEC Level 3 Subsidiary Diploma can lead to further vocational and academic qualifications, including a wide range of Degree courses.

BTEC LEVEL 3 SUBSIDIARY DIPLOMA IN BUSINESS

(formerly known as BTEC National Award)
(1 A Level equivalent)

Course Overview

This qualification gives you an understanding of the essential knowledge and skills needed to help you begin or progress in a broad range of business careers. The course is designed to be adaptable to your needs, abilities and career aspirations. It consists of four compulsory core units plus a choice of two specialist units totalling 360 guided learning hours.

Entry Requirements

5 GCSEs including Maths and English

Business need not have been studied at GCSE level although is preferred.

Modules Include

The core units are:

The Business Environment
Business Resources
Introduction to Marketing
Business Communication

There are 37 optional units, of which two will be chosen in negotiation with the class teacher.

Assessment

Six units need to be completed over the two years. All units are assessed via coursework.

Progression

With the international recognition of BTEC courses you can progress into a variety of potential careers, for example: accounts clerk, medical receptionist or school administrative assistant.

The BTEC Level 3 Subsidiary Diploma can lead to further vocational and academic qualifications, including a wide range of Degree courses.

BTEC LEVEL 3 DIPLOMA IN BUSINESS

(formerly known as BTEC Level 3 National Certificate) (2 A Level equivalent)

Course Overview

This qualification equips you with a broad understanding of the essential knowledge and skills needed to help you begin or progress in a wide variety of business careers. This qualification can also open up further areas of study to you. The course is designed to be adaptable to your needs, abilities and career aspirations: it consists of four compulsory core units plus a choice of eight specialist units.

Entry Requirements

5 GCSEs including Maths and English.

Business need not have been studied at GCSE level although is preferred.

Modules Include

The core units are:

The Business Environment
Business Resources
Introduction to Marketing
Business Communication

Assessment

12 units need to be completed over the two years. All units are assessed via coursework.

Progression

With the international recognition of BTEC courses you can progress into a variety of potential careers, for example: accounts clerk, medical receptionist or school administrative assistant.

The BTEC Level 3 Diploma can lead to further vocational and academic qualifications, including a wide range of Degree courses.

BTEC LEVEL 3 EXTENDED DIPLOMA IN BUSINESS

(formerly known as BTEC National Diploma) (3 A Level equivalent)

Course Overview

This qualification equips you with a comprehensive understanding of the essential knowledge and skills needed to embark upon a successful business career or move on to further study.

The course consists of four compulsory core units plus a choice of fourteen specialist units totalling 1080 guided learning hours.

The structure of the course allows you to focus on your interests, and the areas which you feel will benefit you most, such as understanding business ethics, starting a small business or managing physical resources.

Entry Requirements

5 GCSEs including Maths and English.
Business need not have been studied at GCSE level although is preferred.

Modules Include

The core units are:

The Business Environment
Business Resources
Introduction to Marketing
Business Communication

Assessment

18 units need to be completed over the two years. All units are assessed via coursework.

Progression

With the international recognition of BTEC courses you can progress straight into a variety of potential careers, for example: accounts clerk, medical receptionist or school administrative assistant.

The BTEC Level 3 Extended Diploma can lead to further vocational and academic qualifications, including a wide range of Degree courses.

**BTEC LEVEL 3
SUBSIDIARY DIPLOMA IN
CREATIVE MEDIA PRODUCTION**

(formerly known as BTEC National Award)
(1 A Level equivalent)

Course Overview

This qualification focuses on particular aspects of employment within the appropriate vocational sector. The qualification can extend a learner's programme of study and give vocational emphasis.

Entry Requirements

5 GCSEs including Maths and English.

Modules Include

Animation, Broadcast, Journalism, Camera, Design for the Moving Image, Directors

Editing, Interactive Media and Computer Games, Lighting for Film and Television

Multimedia and Print Journalism, Photo Imaging, Production Design, Production (Film and Television), Publishing, Radio Content Creation and Sound.

Assessment

Six units need to be completed over the two years. All units are assessed via coursework.

Progression

With the international recognition of BTEC courses such as this, you can progress straight into employment. If successful there are a variety of potential careers that you can explore, all of which will benefit from your studies.

The BTEC Level 3 Subsidiary Diploma can lead to further vocational and academic qualifications, including a wide range of Degree courses.

**BTEC LEVEL 3
SUBSIDIARY DIPLOMA IN
ICT**

(formerly known as BTEC National Award)
(1 A Level equivalent)

Course Overview

This qualification is a 30 credit award that consists of two mandatory units plus optional units.

Entry Requirements

5 GCSEs including Maths and English

ICT need not have been studied at GCSE level although is preferred.

Modules Include

Communication and Employability Skills for IT

Computer Systems

Assessment

Six units need to be completed over the two years. All units are assessed via coursework.

Progression

With the international recognition of BTEC courses such as this, you can progress straight into employment. If successful there are a variety of potential careers that you can explore, all of which will benefit from your studies.

The BTEC Level 3 Subsidiary Diploma can lead to further vocational and academic qualifications, including a wide range of Degree courses.

BTEC LEVEL 3 SUBSIDIARY DIPLOMA IN LAW

(formerly known as BTEC National Award)
(1 A Level equivalent)

Course Overview

Sessions will consist of lectures, group work, case studies and research. You will be taught to write analytically and to solve legal problems. The course covers a wide range of legal topics and will give students a good insight into the working of the English Legal System and substantive areas of Law.

Entry Requirements

5 GCSEs at Grade C or above, including English

Modules Include

Dispute solving in the Legal System

Understanding Law Making

Aspects of Legal Liability

Unlawful Homicide and Police Powers

Aspects of Property Offences and Police Powers

Aspects of the Law of Tort

Assessment

Your BTEC work is assessed by continuous assessment. Assignments are set regularly and you will be awarded Pass, Merit or Distinction Grades.

Progression

The course is ideal for anyone who is interested in a career in law. Such careers could include paralegals or legal executives. The course will also give those wishing to study law at University a practical insight into law.

BTEC LEVEL 3 SUBSIDIARY DIPLOMA IN MUSIC (PERFORMING)

(formerly known as BTEC National Award) (1 A Level equivalent)

Course Overview

Learners will develop their practical musicianship skills through practice and performance both as a soloist and in an ensemble. The course includes the development of knowledge in areas of the music industry, popular music, world music and the freelance world.

Entry Requirements

5 GCSEs at Grade C or above including English and Maths (and preferably Music)

The ability to play a musical instrument to an acceptable standard (decided by BTEC tutor team) and an interest in pursuing a career in Music

The dedication to attend weekly instrumental lessons. All students MUST meet with the BTEC Tutor Team to discuss their suitability prior to enrolling on the course.

Modules Include

Music Performance Techniques

Solo Music Performance Skills

Working and Developing as a Music Ensemble

Music in the Community

Music Project

Pop Music in Practice

Studying Music from Around the World

Assessment

Your BTEC work is assessed by continuous assessment. Assignments are set regularly and you will be awarded Pass, Merit or Distinction Grades.

Progression

Students could study music at University entry requirements), apply for employment within the music sector or continue to the BTEC Level 3 Diploma in Music.

**BTEC LEVEL 3
EXTENDED DIPLOMA IN
MUSIC TECHNOLOGY**

(formerly known as BTEC National Diploma)
(3 A Level equivalent)

Course Overview

This is a practically based, work-related course, which will also equip you to go to University. You will learn by completing projects and assignments that are based on realistic work situations. You will have access to purpose built recording studios and state of the art Apple Mac programming suites, to complete your coursework using the latest industry standard technology. Performers will hone their skills at professional rehearsal rooms.

Entry Requirements

At least 5 GCSEs at Grade C or above, one of which must be English, or Level 2 equivalent, or BTEC First Diploma qualification with at least a Merit profile.

Modules Include

Sound Recording Techniques

Listening Skills for Musicians

Composition

Live Sound

Music Sequencing

Band Ensemble

Event Management

Assessment

Your BTEC work is assessed by continuous assessment. Assignments are set regularly and you will be awarded Pass, Merit or Distinction Grades.

Progression

Audio Engineer, Music Arranging, Music Composition, Recording Engineer, Music Software Development, Conducting, Film Scoring, Recording Editing, Teaching, Music Therapist.

**BTEC LEVEL 3 EXTENDED
DIPLOMA IN PERFORMING
ARTS - MUSICAL THEATRE**

(formerly known as BTEC National Diploma)
(3 A Level equivalent)

Course Overview

This is a practically based, work-related course, which will also equip you to go to University. You will learn by completing projects and assignments that are based on realistic work situations. You will also have the opportunity to perform in shows during both years and can supplement your qualification by studying GCSE Dance.

Entry Requirements

At least 5 GCSEs at Grade C or above, one of which must be English, or Level 2 equivalent, or BTEC First Diploma qualification with at least a Merit profile.

Modules Include

Musical Theatre Performance

Performing Arts Business

Dance Improvisation

Applying Physical Theatre

Theatre in Education

Principles of Acting

Devising Plays

Classical Theatre Performance

Assessment

Assessed through continuous assessment of practical and written assignments, most of which are assessed by your tutors. Each assignment is awarded a Pass, Merit or a Distinction, which make up points for University entrance like A Level Grades.

Progression

BA Honours Degree. Performer (Actor, Dancer, etc).

BTEC LEVEL 3 SUBSIDIARY DIPLOMA IN SPORT

(formerly known as BTEC National Award)
(1 A Level equivalent)

Course Overview

If you are interested in the world and industry of sport and wish to gain a deeper insight into the current issues connected to sport, then this is the course for you.

If you wish to develop practical knowledge and experience of working within the fitness and /or sport development industry, this course will provide you with the information and experience you will need.

Entry Requirements

5 GCSEs including Maths and English

PE need not have been studied at GCSE level although is preferred.

Modules Include

There are three core units: The Body in Action, Health and Safety in Sport and Training and Fitness for Sport.

In addition to these core units, you will study an additional three specialist units.

Assessment

You will be assessed via written assignments throughout the two year course. This course is particularly suited to students who achieve more highly in coursework rather than examinations. There is no formal examination at the end of the course.

All units are assessed and graded. Each of the units are added together to provide an overall grade at Pass, Merit or Distinction.

Progression

This course is suitable for 16-19 years olds who are planning a career in the sports industry, or sports development and fitness.

Students are able to use this course to gain UCAS points for University entry. A Distinction grade will usually be required for University.

BTEC LEVEL 3 DIPLOMA IN SPORT

(formerly known as BTEC National Certificate)
(2 A Level equivalent)

Course Overview

If you wish to develop practical knowledge and experience of working within the fitness and/or sport development industry, this course will provide you with the information and experience you will need.

Entry Requirements

5 GCSEs including Maths and English.

PE need not have been studied at GCSE level although is preferred.

Modules Include

There are 7 core units: The Body in Action, Health and Safety in Sport, Training and Fitness for Sport, Sports Coaching, Sport Development, Fitness Testing and Practical Sport (team sports or individual sports).

In addition to these core units, you will study an additional 5 specialist units.

Assessment

You will be assessed via written assignments throughout the 2 year course. This course is particularly suited to students who achieve more highly in coursework rather than examinations. There is no formal examination at the end of the course.

All units are assessed and graded. Each of the units are added together to provide an overall grade at Pass, Merit or Distinction.

Progression

This course is suitable for 16-19 years olds who have decided to have a career in the sports industry, or sports development and fitness.

Students are able to use this course to gain UCAS points for University entry. A Distinction grade will usually be required for University.

BTEC LEVEL 3 EXTENDED DIPLOMA IN SPORT (DEVELOPMENT, COACHING AND FITNESS) (formerly known as BTEC National Diploma) (3 A Level equivalent)

Course Overview

This course has both practical and theoretical components. The course contains 18 modules that are linked to the sports industry and is the equivalent of achieving three A Levels. The course will give you the opportunity to develop a number of skills, including teamwork, self-discipline and time management, self-confidence and motivational skills.

Entry Requirements

At least 5 GCSEs at Grade C or above, one of which must be English, or Level 2 equivalent, or BTEC First Diploma qualification with at least a Merit profile.

Modules Include

- Sports Coaching
- Analysis of Performance
- Sports Leadership
- Fitness Testing
- Sports Development
- Practical Individual Sport
- Organising Sports Events
- Sport and Exercise Massage

Assessment

Assessed through a number of different assessments, which include essays, presentations, practical demonstrations, witness testimonies and log books. The assignments are based around the course content and are as realistic as possible.

Progression

Fitness Instructor, Sports Coach, Sports Development Officer, Sports Therapist, or on to University to become a PE Teacher, Sports Nutritionist or Sports Scientist.

BTEC LEVEL 3 EXTENDED DIPLOMA IN UNIFORMED PUBLIC SERVICES (formerly known as BTEC National Diploma) (3 A Level equivalent)

Course Overview

During this two year course you will study 18 modules in a mixture of classroom and practical situations. You will also study Maths, English and IT and have the opportunity to engage with various Public Services.

Entry Requirements

At least 5 GCSEs at Grade C or above, one of which must be English, or Level 2 equivalent, or BTEC First Diploma qualification with at least a Merit profile.

Modules Include

- Crime and its Effects on Society: looks at why people commit crimes
- Leadership: will look at different styles of leadership and their use in the services
- Skills for Land-Based Adventurous Activities: looks at different types of land based activities
- International Perspectives: will examine institutes such as the EU, the UN and NATO
- Government and Politics: looks at what Government is and how it works
- Citizenship: will look at being a good Citizen within the UK
- Responding to Emergencies: will look at the process of how the services get to an incident
- Teamwork: will involve carrying out a variety of teamwork tasks

Assessment

The course is assessed through essays, presentations and practical demonstrations.

Progression

Students who have studied on this course have progressed to a variety of jobs in the Public Services. Also a number of students have progressed onto University, studying courses such as Criminal Justice, Sports Development and Outdoor Education.

AWARD IN EXTENDED PROJECT

(AS Level Equivalent)

Course Overview

Free choice of topic of study by negotiation with tutor.

The Extended Project is a brand new qualification which allows you to undertake a project to enhance your studies or explore a new area of interest. You will research a topic and produce a written report on your chosen theme. The finished project is worth UCAS tariff points at AS Level.

Entry Requirements

At least 4 GCSEs at Grade D, one of which must be English, or Level 2 skills/craft qualification (eg NVQ 2 or relevant work experience).

Modules Include

There are no set modules for Extended Project. Students are free to choose an area of study.

Assessment

Four forms of assessment.

1. Written dissertation of approx. 4,500 - 5000 words
2. Investigative report of approx. 3,500 words.
3. Production of an artefact supported by written evidence of approx. 2000 words
4. A performance with DVD & 1,500 words.

Progression

Extremely useful qualification for aspiring Higher Education entrants across the full spectrum of Degree disciplines.

INSTITUTE OF FINANCIAL SERVICES - CERTIFICATE

(AS Level Equivalent)

Course Overview

This course enables students to interact with the financial services sector and understand the role of the finance industry.

Entry Requirements

5 GCSEs including Maths and English

Business need not have been studied at GCSE level although is preferred.

Modules Include

First Year (Certificate in Financial Services)

Students will complete three units:

Why money matters

Risk and Reward

Making personal financial judgements

Second Year (Diploma in Financial Services)

Student will complete a further three units:

Financing the Future

Financial Services

Enhancing Financial Capability

Assessment

Each Unit is assessed via an examination.

Progression

This course is designed to meet the needs of those wishing to pursue careers in the finance industry.

Career opportunities include: Financial Service Management, Financial Advisor or Financial Analyst. It also supports progression to Higher Education.

VTCT DIPLOMA IN SPORTS AND FITNESS THERAPY TECHNIQUES

(A Level Equivalent)

Course Overview

The course is taught over two years. You will study a variety of modules that are linked to Sport and Fitness Therapy in a mixture of theoretical and practical situations. The course is designed to give learners the skills needed to gain employment.

Entry Requirements

At least 5 GCSEs at Grade A - C or above, to include English and Science, or Level 2 equivalent, or BTEC First Diploma qualification with at least a Merit profile.

Modules Include

Fitness Testing

Body and Sport Massage

Bio-Mechanics

Nutrition

Taping and Strapping Techniques

Post-Medical Rehabilitation

Injury Avoidance Advice

Personal Training

Assessment

The course is assessed through a number of different assessment methods which include essays, presentations, practical demonstrations, work placements in year two, witness testimonies and log books. The assignments are based around the course content.

Progression

To go on to University or a career in the Sport and Fitness Therapy Industry either employed or self-employment.



Knowsley 6th Form College

Knowsley Sixth Form Campuses

All Saints Catholic Centre for Learning
Roughwood Drive
Northwood
Kirkby L33 8XF

Halewood Centre for Learning
The Avenue
Wood Road
Halewood L26 1UU

Knowsley Community College
Roby Sixth Form Centre
Rupert Road
Roby L36 9TD

www.knowsley.gov.uk/sixthformcollege