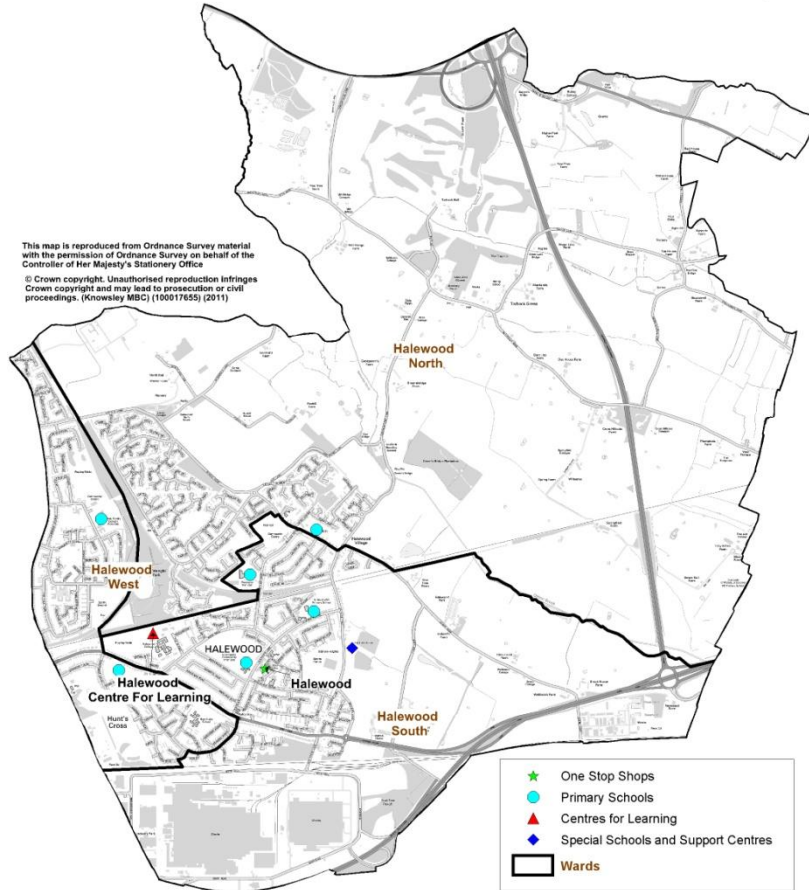
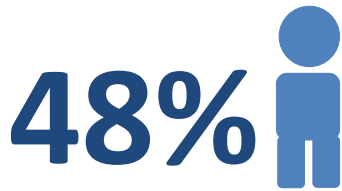


# Area Profile: Halewood

Halewood Area Partnership



## Population



**Male Population 10,297**  
(Knowsley 48%, GB 49%)



**Female Population 11,175**  
(Knowsley 52%, GB 51%)



**Population Change**  
(Down 97 from 2008)



	APB	Knowsley
0-4	1,394 (7%)	9,480 (6%)
5-15	3,016 (14%)	20,335 (14%)
16-64	14,046 (65%)	96,355 (64%)
65+	3,016 (14%)	23,191 (16%)
Total	21,472	149,400

Latest data: 2009 MYE

The age demographics within Halewood reflect those across the borough very closely. The population of Halewood has seen a slight decline from 2008 to 2009, as has the population of the borough as a whole. The decline in population is across the 0-64 age bands, with a slight increase in over 65s in Halewood between 2008 and 2009 (up 47). 14% of Knowsley's population live within Halewood

# Area Profile: Halewood

## Area Priorities

### Health Outcomes

- A project aimed at getting a number of families within the Halewood West and South wards involved in a more intense way and covering whole family health rather than just individual members

### Tolerance & Cohesion

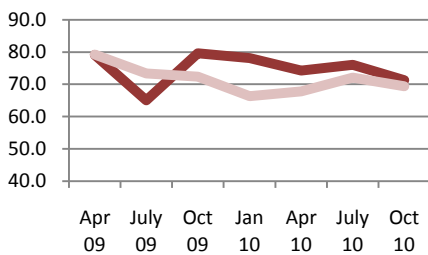
- Map and evaluate current work
- Carry out specific projects at both WAFTA and Kinloch close involving cross generational work
- Develop intergenerational work around the Court Farm Woods area involving younger people

### Climate Change

- Developing a Centres for Learning climate pledge for the borough, with a trial at the Halewood Centre for Learning. The pledge on tackling climate change would be made by governors, teachers and pupils alike and it is proposed should focus on a particular theme – ‘sustainable diets’

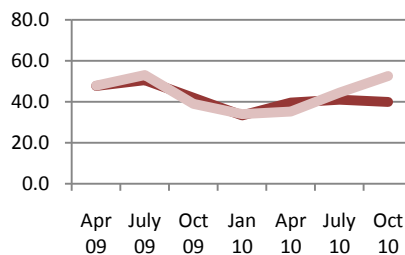
## Tracker Survey

### Happiness



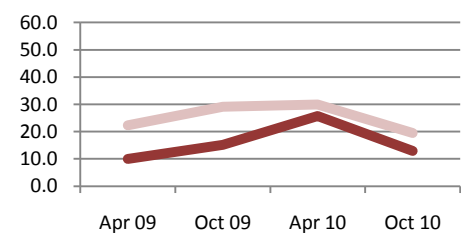
Happiness levels have been on the decline and are **lower** than the same time last year

### Ability to afford what makes people happy



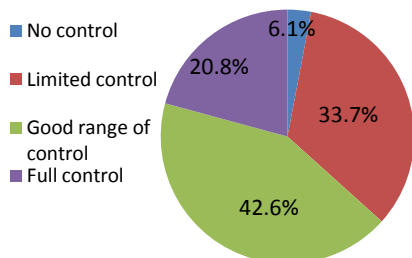
Since January 2010, slightly **more people agree** that it is **more difficult** to afford things that make them happy.

### Tension



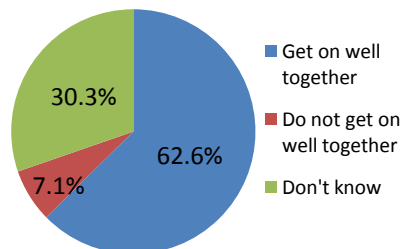
Perceived tension levels are at their **lowest** recorded and have also been lower compared to the borough average

### Resilience



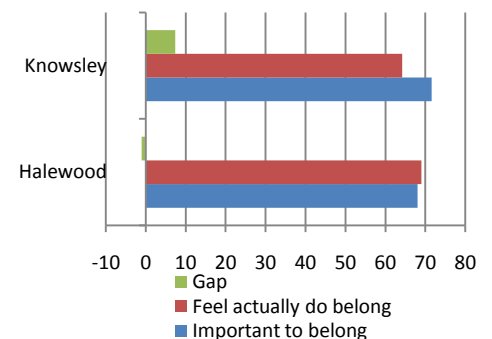
The majority of people feel they have either full or a good range of control (63%). However, this is slightly **below the borough average**

### Whether people get on well together



Nearly **63% of people** feel that people from different backgrounds get on well together, the **highest of all APBS**

### Belonging to neighbourhood



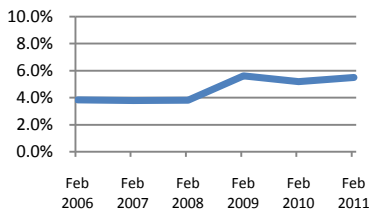
There is a negative gap in Halewood of **-1**, indicating **more people feel they actually do belong** than feel it is important to belong. Halewood is the only APB where this is the case.

# Area Profile: Halewood

## Labour Market

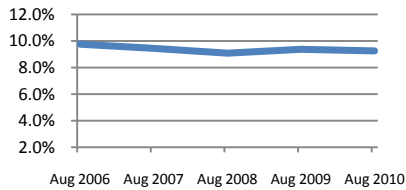


**14,046**  
Working age population  
(65% of total population)  
(Knowsley, 64%, GB 64%)



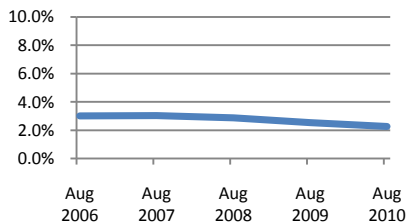
### JSA – 773

(5.50% of Working age population, Feb 2011)  
(Knowsley 6.3%, National 3.8%)



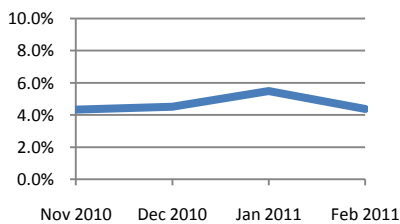
### IB/ESA – 1,300

(9.26% of working age population, Aug 2010)  
(Knowsley 12.9%, National 6.7%)



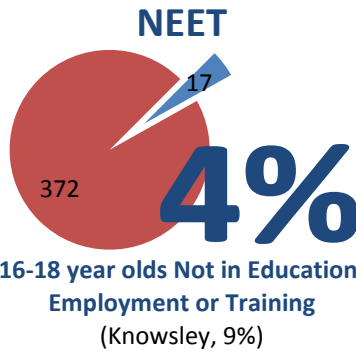
### LP – 318

(2.26% of working age population, Aug 2010)  
(Knowsley 3.3%, National 1.7%)



### NEET – 17

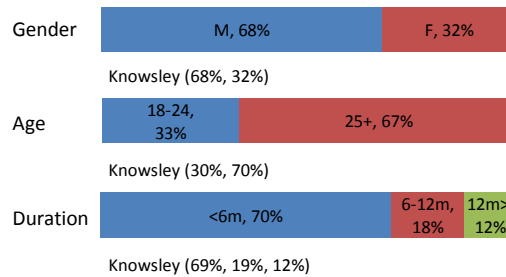
(4.4% of 16-18 year olds, Feb 2011)  
(Knowsley 9.19%)



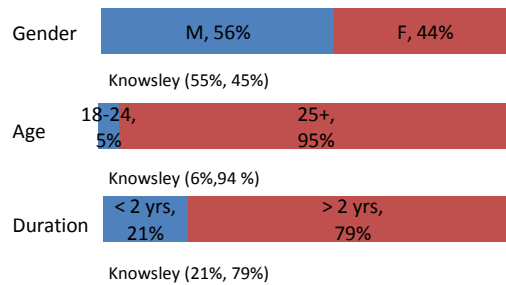
## Total benefit claimants



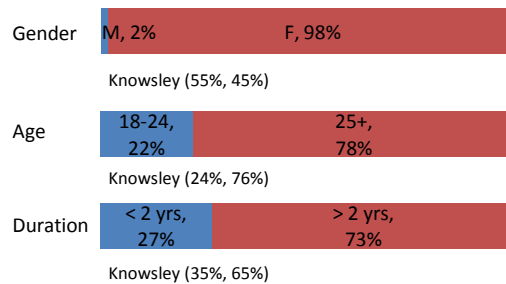
■ JSA ■ IB/ESA ■ LP ■ Other (Aug 10)



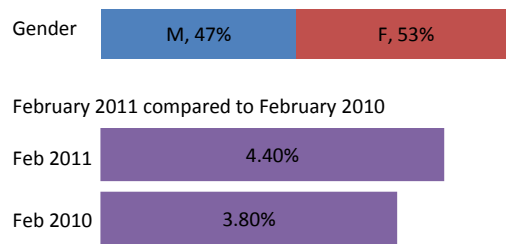
The percentage of JSA claimants has been on the increase for the last 5 years. Levels remain lower than the Knowsley average yet higher than the national. The majority of claimants are male, most are over 25 and the majority have been claiming the benefit for less than 6 months.



The proportion of Incapacity Benefit / Employment Support Allowance claimants is slightly down from last year. The Halewood figure is the lowest of the partnership areas but still above the national average. Most claimants are male, the majority are over 25 and a significant proportion have been claiming for over 2 years.



The proportion of lone parent benefit claimants has reduced over the past 4 years and is the lowest of all partnership areas. However, it remains above the national average. Almost all claimants are female. The majority are over 25 and most have been claiming over 2 years.



Despite a slight increase in January the proportion of NEET 16-18 year olds in Halewood has remained fairly stable over the last 4 months. The figure is below the Knowsley average and the lowest of all partnership areas. The gender split is almost equal. The proportion NEET is up 0.6% points on this time last year.

# Area Profile: Halewood



**8,774**

Number of residential properties

Knowsley 66,569



**246**

Number of empty homes

Knowsley 2201



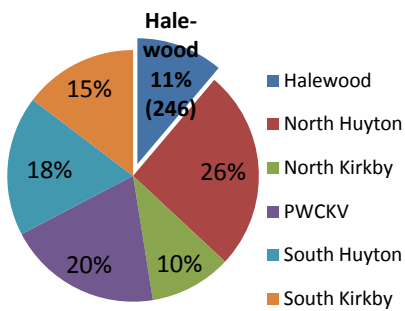
**41**

Number of properties with council tax arrears over £2,000

Knowsley 299

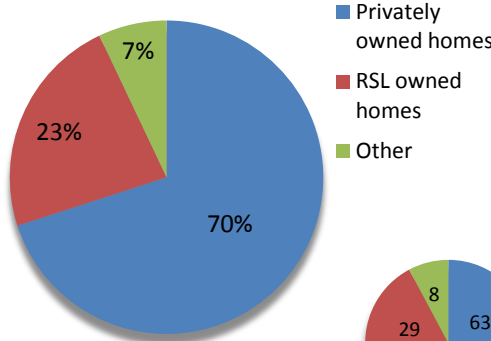
## Housing

### Empty homes



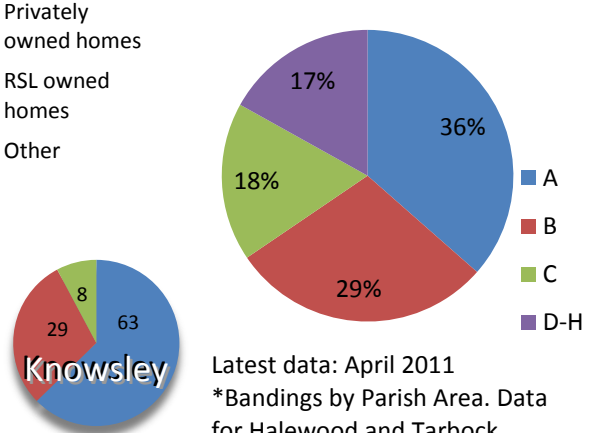
Latest data: March 2011

### Tenure mix



Latest data: March 2011

### Council Tax Banding - Halewood



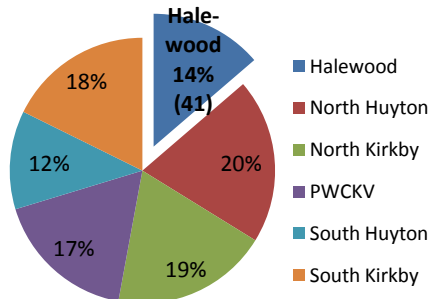
Latest data: April 2011

\*Bandings by Parish Area. Data for Halewood and Tarbock

Halewood has one of the smallest numbers of empty properties in the borough. In Halewood, 70% of the homes are privately owned and 20% are RSL owned which is one of the lowest figures in Knowsley. Around a third of the homes in Halewood (36%) fall within council tax band A, indicating a property valuation in 1991 of under £40,000. Just under half of the properties (47%) are banded B-C with and 17% of properties within bands D-H.

## Debt

### Council tax arrears over £2,000



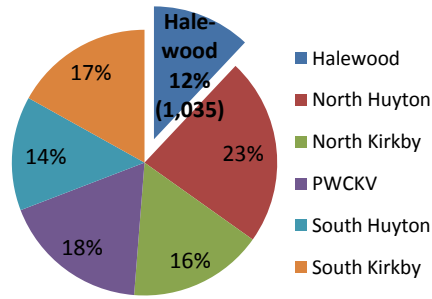
Latest data: October 2010

Total number of addresses

**299**

Knowsley

### Council tax arrears up to £2,000



Latest data: October 2010

Total number of addresses

**8,631**

Knowsley

Of the 299 properties in the Borough with council tax arrears over £2,000 14% (41) are within Halewood. The proportion of properties with council tax arrears up to £2,000 is slightly less, with 12% (1,035) of the 8,631 addresses with council tax arrears under £2,000 within Halewood.

# Area Profile: Halewood

## Health

**76.2 yrs** – Males

**79.5 yrs** – Females

### Life Expectancy

(Knowsley males – 75.9 yrs  
Knowsley females – 79.8 yrs)

**17.9%**

### Smoking Prevalence

(Knowsley 24.1%)

**717.4**

per 100,000 population

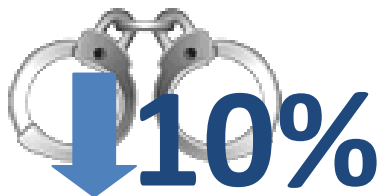
### All causes Mortality

(Knowsley 695 per 100,000 population)

Health Indicator	Time Period	Halewood	Knowsley	England	
Low Birth Weight Births	2007-09	6.8%	8.4%	7.3%	
Breast Feeding	10-14 Days	2009-10	31.3%	21.5%	-
	6 Weeks	2009-10	24.2%	14.8%	44.9%
Obesity	Reception Year	2007-08 to 2009-10	11.1%	11.9%	9.7%
	Year 6	2007-08 to 2009-10	19.9%	21.7%	18.5%
Alcohol Related Harm	2010-11 Q1	1,637.1	2,643.2	1,780.0	

Halewood has one of the lowest percentages of low birth weight births across the borough and is below the England average. The area has the highest percentages for breast feeding out of all six APB's and one of the lowest figures for alcohol related harm. In terms of obesity, Halewood is lower than the Knowsley average but higher than the England average.

## Community Safety



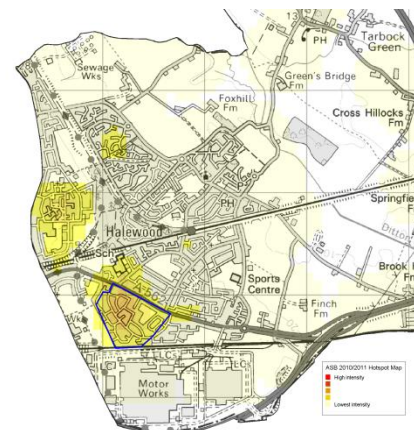
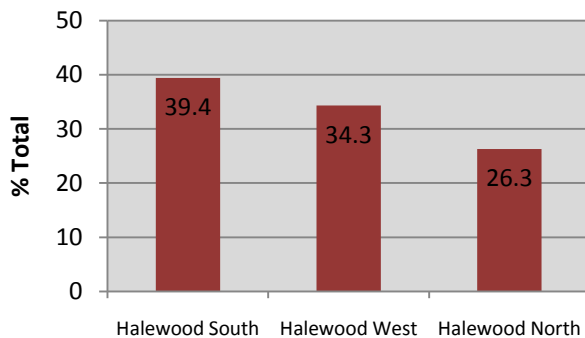
### Crime

(892, last year 995)  
(Knowsley 13% reduction)



### Anti Social Behaviour

(882, last year 1,186)  
(Knowsley 18% reduction)



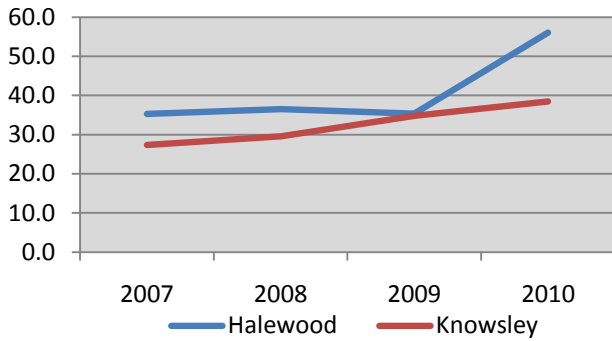
Crime levels have continued to fall in Halewood, in line with the rest of the borough. The most common crimes are Criminal Damage (25%) and Drugs (20%). Criminal Damage is particularly high compared to Knowsley overall.

ASB levels have continued to fall in Halewood, in line with the rest of the borough. Hotspot locations include Torrington Drive and the Arncliffe area.

# Area Profile: Halewood

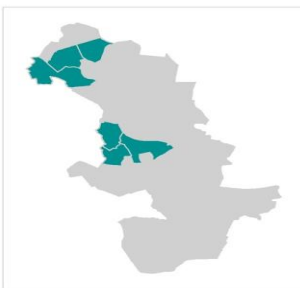
## Attainment

### % achieving 5+ A\*-C (including English and maths) at GCSE



GCSE attainment in Halewood is much higher than the Knowsley average and the highest of all partnership areas. Progress was stable over 2007-2009, with an increase in performance between 2009 and 2010. 2010 data shows a performance gap with Knowsley of 18 percentage points.

### Ward level GCSE attainment

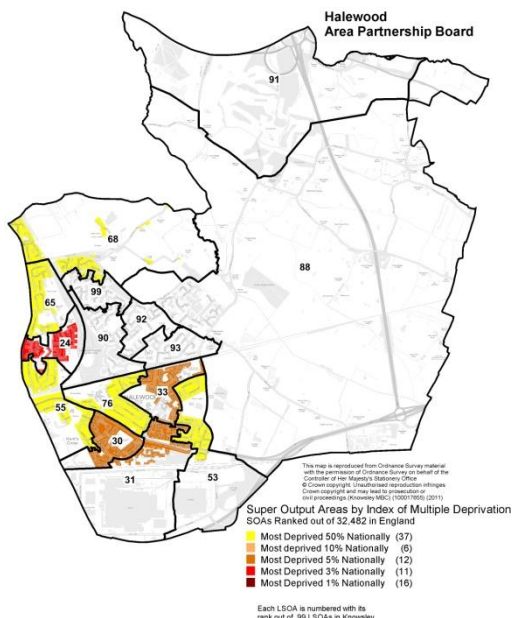


This map highlights the Knowsley wards with the lowest attainment rates. None of these wards are within Halewood.

All three wards within Halewood are performing above the Knowsley average. Halewood North has the highest GCSE (5+ A\*-C including English and Maths) attainment of all the wards at 74.5%. Latest performance in Halewood West was 53.7% with performance at 43.4% in Halewood South.

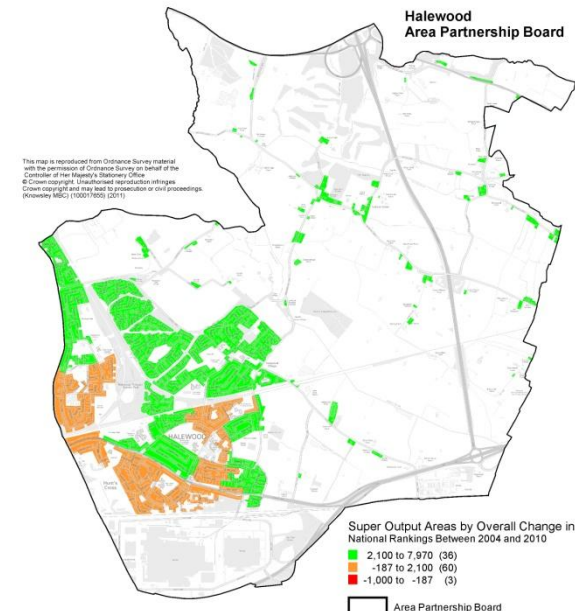
## Index of Multiple Deprivation 2010

### Most Deprived Nationally



The majority of Halewood is outside of the 50% most deprived nationally. One Super Output Area is within the 3% most deprived nationally, and is ranked 24<sup>th</sup> locally.

### Overall Change between 2004 and 2010



The above map shows Super Output Areas which have declined or improved in rankings between the IMD 2004 and 2010. The majority of Super Output Areas have seen an improvement in rankings between 2004 and 2010.