

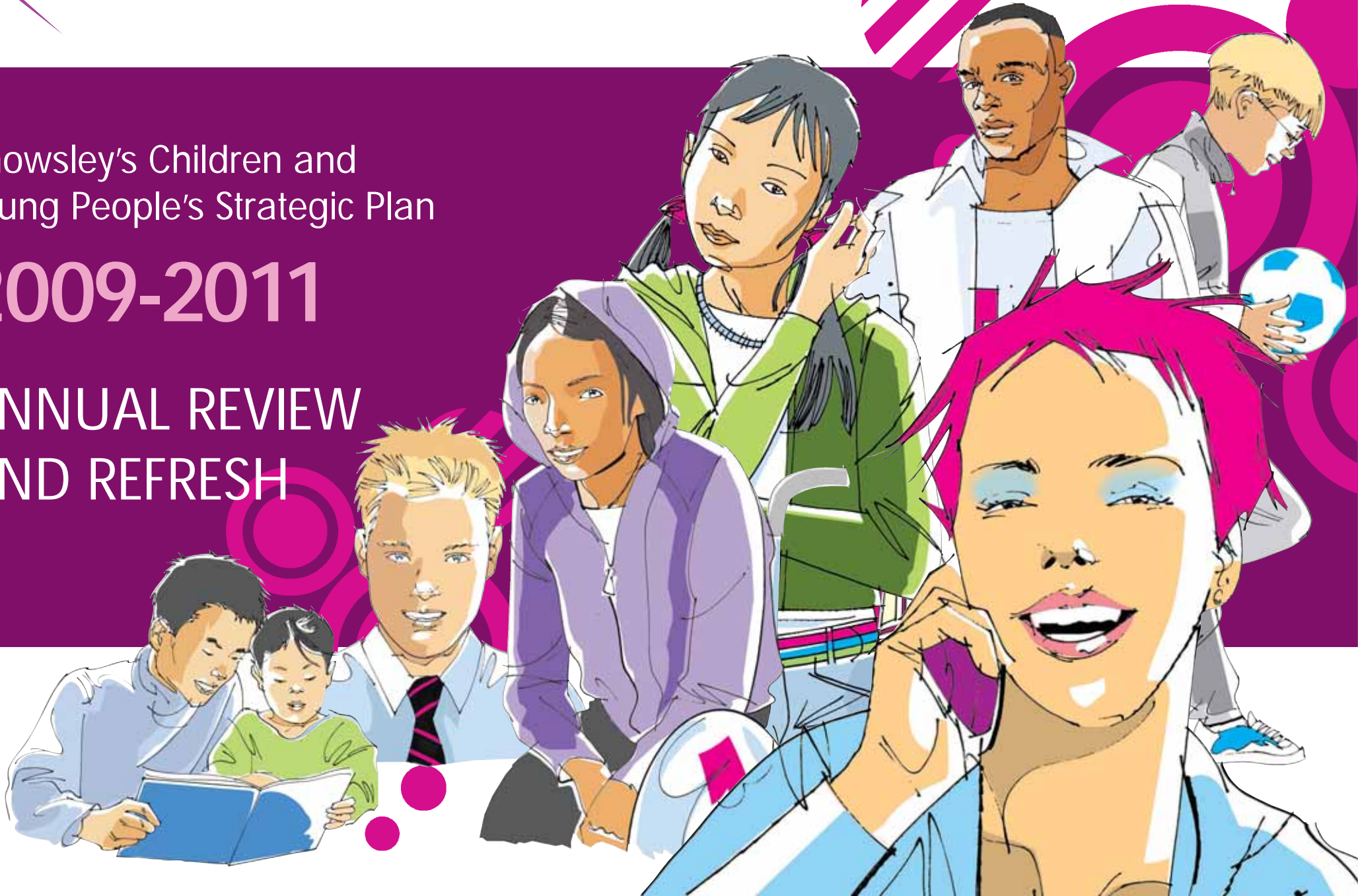


Knowsley Children
and Young People's
Services

Knowsley's Children and
Young People's Strategic Plan

2009-2011

ANNUAL REVIEW
AND REFRESH



Foreword	2	Where are we investing and why?	20
Why have a plan for children and young people?	4	Who benefits from the services provided?	21
The Knowsley Children's Trust	5	Conclusion	25
A Borough of Choice	6	Appendix - Delivery Plan 2009-11	27
What are the successes of children and young people in Knowsley?	7		
Annual Review	8		
Local Priorities	14		
What are the challenges facing children and young people in Knowsley?	15		
What are children and young people and parents and carers telling us about their needs?	18		



Contents

Supporting the children of Knowsley to grow and develop is not the work of a few but of the many. This fourth Plan for Children and Young People illustrates how the efforts of the many are making a big difference.

Most importantly, the efforts of children and young people themselves must be recognised. The hard work and great new ideas of the Children and Young People's Forum are being turned into multi million pound investments across the borough. Children and young people working alongside a variety of teachers, youth workers, social workers, healthcare workers and many others is proving a potent combination.

When we look around us we can see that things are happening. We are entering into a period of renaissance for the facilities for children and young people. Millions of pounds of investment is being rolled out across the borough for new children's centres, our state of the art centres for learning, new youth facilities, new primary schools, health facilities and new play facilities. Some of these are up and running, some are being built as we speak, and some are being planned in the knowledge that we have the money to spend. While buildings in themselves don't always change lives, they do represent hope and embody a formidable local determination from both children, young people, families and professionals alike that Knowsley is investing in the future.



Foreword

Confidence is growing. Earlier this year Government surveyed young people across the country asking them how happy they felt and found that young people in Knowsley were among the happiest. This is truly heartening. Happiness of course has many foundations and for a child or young person to truly thrive they need a loving and supportive family or care, a good home, the best of friends, a strong community in which they feel a sense of belonging, good health and well being and opportunities to reach their potential. Every family wants better for their children and all services and agencies want to help them help their children. In 2010 we will be establishing our Knowsley Children's Trust, which will provide a strong foundation on which to deliver this commitment.

The evidence of improvement is mounting, as illustrated here, and while this is great news we are not complacent. Making Knowsley the 'Borough of Choice' is a profound ambition and to realise this we must be relentless in our ambition for our children and young people. In this plan we set out how we can all work together to achieve this.



A handwritten signature in black ink, appearing to read 'G Wright'.

Cllr Graham Wright
Lead Member for
Children and Family Services
Knowsley MBC



A handwritten signature in black ink, appearing to read 'Damian Allen'.

Damian Allen
Executive Director for
Children and Family Services
Knowsley MBC



A handwritten signature in black ink, appearing to read 'Stephanie Hall'.

Stephanie Hall
Chair of
Shout Participation
All Round Knowsley (SPARK)

In 2007 Knowsley published its third Children and Young People's Plan setting out how local organisations working with children and young people come together to support them to:

- **Be Healthy**
- **Stay Safe**
- **Enjoy and Achieve**
- **Make a Positive Contribution**
- **Achieve Economic Wellbeing**

This document updates the 2007/10 plan to reflect recent performance and Government policy, and extends its delivery to 2011. In doing this the partnership has:

- reviewed the performance of services and the impact on children during 2007/08;
- assessed need by listening to what children, young people, families and staff have told us;
- evaluated the external assessment of our performance from inspection information; and
- identified areas where most improvement is needed.

**Why have a plan for
children and young people?**



Recently Government has decided to require each area to establish a Children's Trust by March 2010. The Knowsley Children's Trust will be made up of all the agencies supporting children and young people such as the council, the NHS, schools, GPs, the Police, Knowsley College, Voluntary and Community Organisations, the Connexions Service, Job Centre Plus and many others. In Knowsley we already have strong foundations for this through our Children and Young People's Partnership, so we will grow from a point of strength.

The meeting of the ambitions for children and young people set out in this revised plan will be the responsibility of all members of the Knowsley Children's Trust to deliver. Children's Trusts must prepare a new plan by April 2011.

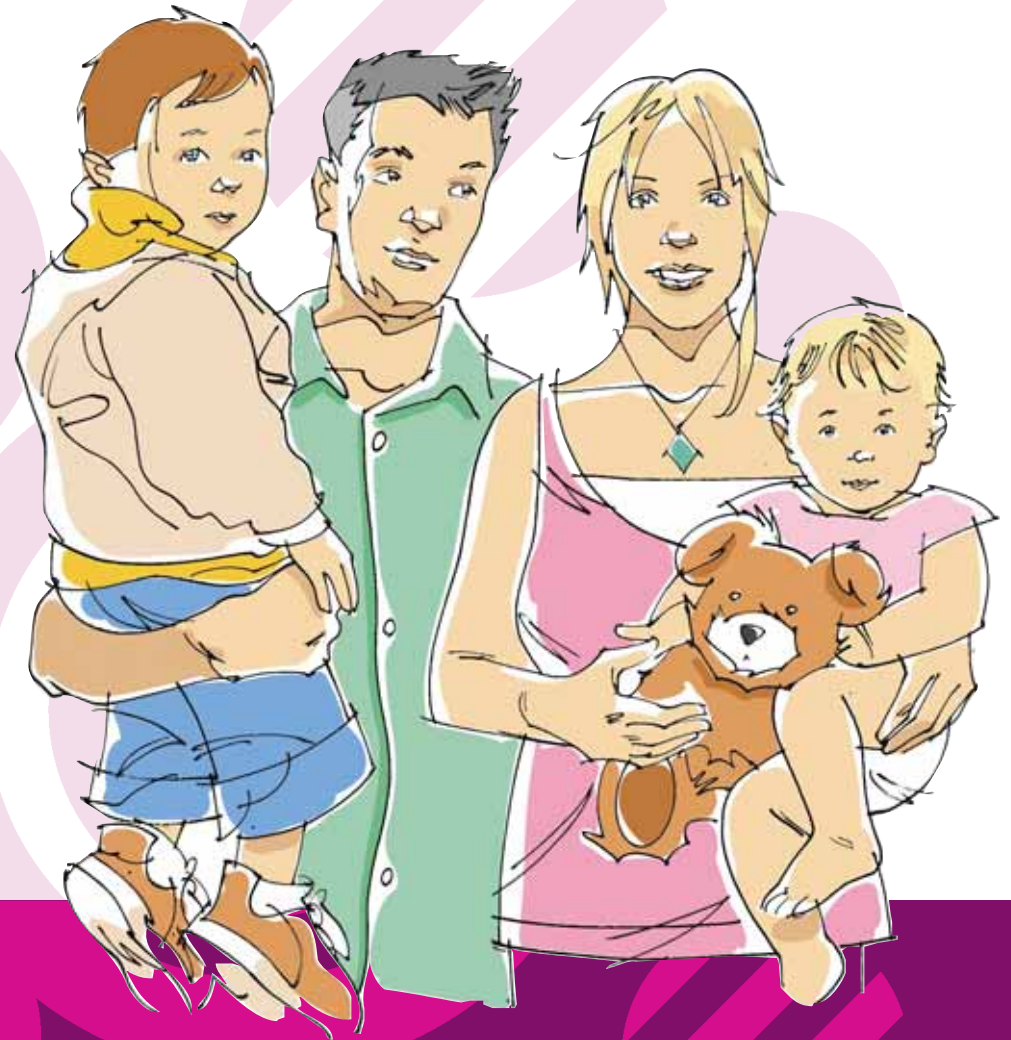


The Knowsley Children's Trust

The council and its partners' wider ambition for Knowsley is that it has attractive communities with high quality and affordable housing and excellent facilities, high performing schools, more people in work, fewer children living in poverty, healthier residents, less anti social behaviour and crime and more public green space.

If Knowsley is to achieve these ambitions it is the children and young people of today who will most likely make a huge contribution.

This plan sets out how the services provided to children and families will help them so that they in turn can make the most of their potential.



A Borough of Choice

Very recently Government undertook a national survey of young people to gauge their general happiness, amongst other things. It found that young people in Knowsley were among the happiest in the country in contrast to those from many wealthier areas. Perhaps this leads to a conclusion that there is a quality of life in Knowsley that is underestimated, and not routinely monitored by central Government.

We know that every day children and young people across the borough are achieving great things. Some of these are reflected in our annual 'Celebration of Achievement' at the Philharmonic Hall in Liverpool. What we are seeking to demonstrate here is the story behind the lives of children in the borough.

The work of the Children and Young People's Partnership has been assessed by Government through a process called the Annual Performance Assessment and from this year through the Comprehensive Area Assessment, and the Children and Young People's Assessment. Currently Knowsley shows clear improvements across children's health, safety, achievement, positive contribution and economic wellbeing.

We chose to focus on nine priorities within the Children and Young People's Plan 2007/10, and we have assessed our progress in delivering these.

In addition we have compiled a comprehensive Children and Young People's Needs Assessment, which pulls together information about the borough, with a comprehensive overview of what children, young people and their families are telling us. A summary of the key headlines and the areas we have chosen to focus on for the next two years are below.



What are the successes of children and young people in Knowsley?

Priority outcome 1:

Children and young people maximise their health potential

We want Knowsley children to be healthy children and we think that good progress has been made towards this. The key successes have been:

- More children and young people understand the need for exercise and the importance of being healthy
- The number of infant deaths is falling
- More babies are being breastfed
- More children are being immunised
- Levels of obesity in reception age children are reducing

What have we chosen to focus on for the next two years?

- Improving maternal health and early years
- Improving dental health
- Healthy weight
- Improving children and young people's emotional and mental health

Priority outcome 2:

Children and young people make positive choices in relation to risk taking behaviour

We have seen some positive progress but appreciate that children and young people face significant risks. The key successes have been:

- Reduction of under 18 conception rates
- Reduced numbers of children and young people who smoke and a reduced number who are exposed to smoke within their homes

What have we chosen to focus on for the next two years?

- Continuing to reduce teenage pregnancy rates
- Reducing the number of children and young people taking drugs and drinking alcohol
- Further reducing the number of children and young people who smoke

Priority outcome 3:

Children and young people are safe in their families and communities

Since our Joint Area Review (JAR) in 2007 we have invested in improving the safeguarding of children and young people in Knowsley and we are making good progress. However, events at a national level and the subsequent responses, reinforce the need to continue our focus on this locally, to ensure that children are protected from harm. We also know both from Government 'sampling' and from our local evidence gathering that whilst Knowsley may seem to compare favourably to some other areas, bullying is still a significant issue for our young people and for their parents and carers. Improvements have been:

- 'Stay Safe', ensuring that children are safe, was judged as 'good' in last year's Annual Performance Assessment and actions arising from the JAR have been completed
- The number of Knowsley children being killed or seriously injured has reduced
- A Knowsley E Safety Policy has been launched
- More children are benefiting from services working more effectively together
- Number of Knowsley children going to hospital with injuries has reduced

What have we chosen to focus on for the next two years?

- Better identification, assessment and support for children with additional needs
- Improve support for children where abuse or neglect is suspected
- Improve the support for families where domestic abuse is an issue
- Improve our approaches to bullying

Priority outcome 4:

Children are ready for school

Having the best start in learning gives children the best opportunity to develop now and in later life, and we have made significant improvements which include:

- The achievement of Knowsley children at the Foundation Stage has risen rapidly in recent years and is now better than the national average
- We have narrowed the gap between the lowest achieving 20% of children and the rest of their peers
- There have been particular improvements in communication, language and literacy at Foundation Stage

What have we chosen to focus on for the next two years?

- Having sufficient and accessible early years and childcare provision
- Continuing our efforts to narrow the gap in achievement between the lowest achieving 20% of 5 year olds and the rest of their peers
- Improving the quality of private and voluntary early years settings

Priority outcome 5: Improved and sustained educational attendance and attainment

Knowsley has continued to invest in improving standards in education and we have improved year on year. In 2008 attainment of 5 A*-C GCSE rose by a further 6% to 57%. This is 40% higher than a decade ago. GCSE results including English and Maths rose three times faster than the national average. Importantly, achievement by looked after children at GCSE in 2008 saw a 33% rise on 2007. Our new state of the art centres for learning are now opening, with the last one due to open in January 2010 and:

- We have narrowed the gap in attainment at Key Stage 2 and 4
- Less children are absent from primary schools
- Knowsley young people with special educational needs (SEN) do well at Key Stage 4 and the gap between pupils identified with SEN and those without is less than the national average
- More children leave primary school with good achievements in Key Stage 2 SATs
- More young people than ever left school with 5 or more good grade GCSEs
- Fewer children and young people excluded for one or more fixed periods, which is below the national average

What have we chosen to focus on for the next two years?

- Improving children and young people's attendance at school, particularly unauthorised and persistent absence
- Improving standards in primary schools
- Increasing the number of young people gaining good GCSEs including English and maths
- Narrowing the gap and support for vulnerable children and young people



Priority outcome 6:

High quality informal learning, cultural and sporting opportunities available for children and young people both inside and outside school

We know that children and young people benefit from having a range of positive experiences and as a borough we have invested both in the environment and in things for young people to do. Equally as important is investing in improving the skills, and qualifications of parents, whose impact on whether children do well at school is critical. Successes have been:

- More parents than ever are taking up family learning programmes
- More schools now offer a range of extended activities
- More children and young people participate in sports
- Sixty per cent more schools were awarded the Arts Mark, and we anticipate exceeding our target next year
- There have been a range of projects undertaken with schools to promote community cohesion

What have we chosen to focus on for the next two years?

- Increasing the take up of leisure and cultural activities by all children inside and outside the school curriculum
- Increasing the range of family learning activities available and the number of families participating in these
- Increasing the number of schools offering the full range of extended schools activities

Priority outcome 7:

Children and young people are positively engaged and contributing in their communities

We know that by engaging with young people they have opportunities to participate in activities which broaden their horizons and support them in living independent and fulfilling lives. Successes in this area include:

- Increased number of young people in contact with the Youth Service
- Increased number of recorded or accredited outcomes for young people
- Recent figures for young people who enter the youth justice system for the first time suggest that we compare well with similar areas
- Reduced incidents of anti-social behaviour
- Reduction in overall re-offending rates
- 2,528 more young people voted in the Youth Parliament elections

What have we chosen to focus on for the next two years?

- Improving development opportunities, advice and guidance and positive leisure activities
- More children and young people engaged in the design, delivery and evaluation of services
- Reducing the number of first time entrants to the youth justice system

Priority outcome 8:

Young people, by the age of 19, achieve economic wellbeing through choice

Young people need to have the right skills as they become adults and move into higher education or work. A recent Government inspection of our work in this area judged Knowsley to be one of the national leaders on broadening out the curriculum for 14-19 year olds and judged it to be outstanding. Key strengths have been:

- Reduced the proportion of young people who are not in employment, education or training (NEET) from 15.6% in 2001 to 12.45% in 2008. Latest Knowsley NEET figures continue to improve, bucking the national trend
- Expanded our range of diplomas judged as good by Ofsted and partnership working in this area was judged as outstanding
- Created more than 200 new apprenticeships for young people

What have we chosen to focus on for the next two years?

- More young people in education, employment or training, and increasing the number of youth apprenticeships
- More young people with good qualifications
- Reduce child poverty and increase employment rates

Priority outcome 9:

Improved overall outcomes for the most vulnerable children and young people:
Children Looked After

Spending time in care as a child is one of the most powerful indicators of social exclusion. Considerable improvements have been made this year to ensure that children in care in Knowsley have the best possible experience. The multi agency Corporate Parenting Strategy that underpins our improving outcomes for children looked after, the launch of the Children in Care Pledge and the establishment of MADE (Making a Difference Everywhere) ensure that looked after children and young people's voices are heard effectively in decision making. Improvements include:

- More children and young people looked after have health check ups than the national average
- More children have stable placements
- Higher than the national average number of care leavers in suitable accommodation
- Good attendance at school
- Significant improvement in the number of young people looked after leaving school with good GCSEs, which is significantly better than the national picture
- Knowsley has more care leavers in education, employment or training than the national picture

What have we chosen to focus on for the next two years?

- Improvements in the quality and choice of placements
- Embedding improvements and continuing to improve educational achievements at all stages
- Reducing the numbers of looked after children through improved care planning and more effective preventative services

Children with disabilities

In Knowsley 2.2% of the 0-19 population have disabilities or learning disabilities that lead to a statement of educational needs compared to 1.98% nationally. Children with disabilities and their families need additional support to help them live as 'normally' as possible and achieve their potential. We intend to focus on improving the provision and outcomes for children and young people with disabilities. They are more vulnerable than many children without disabilities. We will:

- Significantly increase the provision of short breaks based on a local population needs assessment and in line with what disabled children and families want
- Improve the transition process to adulthood and to adult services
- Significantly increase access to universal services including measures specific to severely disabled children
- Improve the co-ordination of services for disabled children under five and their families



Each of the Area Partnership Boards have agreed neighbourhood priorities which will focus on a number of issues for its area and will improve children and young people's outcomes at a local level. The priorities for 2009/10 are:

Halewood

- Reduction in smoking
- Increase attendance at THINK services by young people
- Reduce NEET
- Reducing crime and anti social behaviour

North Huyton

- Stockbridge Village regeneration
- Community Cohesion
- Youth diversionary activities
- Supporting families

South Huyton

- Improved educational attainment
- Reducing NEET
- Reduction in perception / fear of crime and dealing with gangs of youths

North Kirkby

- Play facilities and maximising open space potential
- Education and behaviour change
- Fear of crime, diversionary activities, cross-generational activities and reducing serious crime and arson rates
- Alcohol use and abuse and impact on the community
- Under fives' dental health
- Sexual health - primarily reducing Chlamydia in under 25s
- Northwood, NEET - apprentice/find your talent and maximising the impact of the learning centre

South Kirkby

- Kirkby central, worklessness, crime, health and school attendance
- Cherryfield, NEET
- Specific hotspots - fear of crime (rowdy/inconsiderate behaviour)
- School attendance

Preston, Whiston, Cronton and Knowsley Village

- Clean, green and safe, improved service delivery
- Attainment and attendance

Local Priorities

Child poverty

Perhaps the biggest challenge in our borough is the number of children that live in poverty as defined by household income below 60% of the national average. While everyone knows that less wealthy people can be contented and wealthy people unhappy it is generally true that poverty affects a child's long term opportunities and aspirations.

We calculate that approximately 58% of children in Knowsley live in some form of poverty; tackling deprivation in order that children have better chances in life must be a priority for us all.

Families under stress

Children, of course, do not live in isolation. They have families and people who care for them. We estimate that there are in the region of 21,500 families in Knowsley, with around 35,000 children. Of these families, 31% have no working adult, 47% are lone parent families, and 26% are lone parent families without work. Approximately 12,500 children live in workless homes and just over 10,000 of these children are in single parent families. In short there are large numbers of children of single parents who live in a technical definition of poverty and who rely heavily on extended family for support.

We recognise that against this background some children and young people do not have the same advantages and that some Knowsley families can experience stress. At this time families need additional support from services. Family background remains the most likely determinant of a child's future success so working alongside families to break cycles of poverty is critically important. Given the scale of this issue in Knowsley agencies have to strike a difficult balance between supporting parents to do their job and intervening in the interests of the child.



What are the challenges facing children and young people in Knowsley?



Staying safe

Children need to be and to feel safe if they are to fulfil their potential. Safeguarding children is therefore of critical importance to the council and its partners. In Knowsley there are significant challenges facing agencies in their efforts to keep children safe, such as the high levels of parental drug and alcohol misuse, domestic violence and mental health problems. Weapon crime and related criminal activities are placing increasing numbers of children and young people at risk.

The council and its partners will need to continually improve the effectiveness of their joint working to keep children safe.

At school

While the performance of Knowsley's schools remains short of national averages, the gap has narrowed considerably in recent years. Performance in Knowsley's schools has also seen steady improvement and many of our schools are among the best in the country having been identified as outstanding by Ofsted. Schools have seen high levels of investment in

recent years both in the school workforce, buildings and new technology. The link between higher investment and increased performance is evident and further improvement can be expected in the coming years. Changes in the way children learn are expected and the challenge to our schools is to adapt to those changes. Changes in the function of schools is also taking place as Government outlined in its policy on 21st Century Schools; schools are part of a wider delivery of services to children, families and communities and we are increasingly seeing schools as more than just a place for education.

Being healthy

The health of children and young people is of critical importance. Whilst it is generally acknowledged that children are now healthier than many previous generations there are areas of current concern which perhaps reflect modern lifestyles. A combination of factors mean that children are perhaps less active than in the past and this, together with ready availability of unhealthy food, is leading to higher levels of childhood obesity.

Further, we perceive there to be evidence that young people are more vulnerable to mental health problems and are less resilient. One of Knowsley's most challenging problems is that of teenage pregnancy with the current rate running at 54 per one thousand 16-19 year old girls. There is a clear need to continue to reduce the number of teenage pregnancies but also to directly address the social and cultural issues that provide the context.

Anti social behaviour

Anti social behaviour remains high on the agenda and evidence from our communities, particularly from older residents, points to serious concerns, with anti social behaviour featuring highly on local quality of life surveys. Far more needs to be done to find places to go and things to do for young people, prevent the problems from occurring in the first place, hold families to account and create a climate whereby it is seen as unacceptable.

Social mobility and aspiration

Everyone knows that the world of work is changing rapidly and that many of the jobs held by the grandparents of young people today simply no longer exist or will have moved to other parts of the world. If our young people are to succeed in today's world then they need to be equipped to meet the challenges. If Knowsley is to succeed in breaking the problem of intergenerational unemployment then it is critical that the combination of better education and jobs availability combines to good effect.

The challenges are quite stark. More and more jobs require qualifications and more and more jobs require higher level qualifications. Over 40% of young people now go to university and employers can choose from a bigger pool of talent. So called 'professional' jobs are growing while jobs requiring no skills or qualifications are disappearing fast.

University, of course, isn't for everyone and not every young person will want to take this pathway but if Knowsley is to thrive in the future then more of its young people need to be educated to this level. Alongside this, young people have to be able to satisfy the needs of local employers and few these days are interested in young people with no qualifications.

Since the emergence of the Every Child Matters agenda we have invested heavily in involving young people in explaining how they wish services to work for them through SPARK (Shout Participation All Round Knowsley) approach, which aims to join together a range of networks that children and young people are part of.

Consultation with young people elicits strong views. These range from a widely held view that PSHE lessons in schools are poor, the view that adults think crime is worse than it actually is, that relationship education should start in primary school and sexual health education should start early in secondary school and should also be accessible at youth and leisure centres. Many young people state that the reasons for school non attendance are boredom and a lack of practical education and there being no incentives for those who attend regularly. Many felt that there should be more positive coverage of the lives of young people.


Our across the board engagement with children and young around service design is having profound impact. This is particularly the case around looked after children where service providers have signed up to a 'looked after pledge' under which every action is premised with the phrase 'if this were my child'; setting out the requirements looked after children have of services when in placements, supported by social or health workers and at school.

Working with a succession of groups of both children and young people around issues of identity and locality raised some interesting challenges and illustrated clearly the rapid changes that take place from childhood to early teens. Simply put, some younger children are intimidated by their communities and place trust in families and extended families. As they become teenagers they develop a devotion to relatively small neighbourhoods to the extent which they fear straying beyond given boundaries.

The conclusion drawn from this is that many young people and children live in relatively small places. This presents huge challenges for public services as they cannot hope to provide every small community with one of everything. Furthermore, such attitudes inevitably influence approaches to employment and wider social mobility.

The Children and Young People's Partnership has commissioned an independent Commission on the Lives of Young People in Knowsley led by Phil Redmond of Capital of Culture, Hollyoaks and Brookside fame. It is due to report in December after a long consultation with both young people themselves, parents, schools, older people and those who work with young people. The outcome of the work of the Commission will no doubt provide us all with much food for thought.

What are children and young people and parents and carers telling us about their needs?



By and large the views of parents and carers agree with those from children and young people. Parents fear for their children particularly around drugs and alcohol. They fear for their safety, that they do not become victims of bullying or knife crime. Parents want their children to start to discuss relationship education and to receive sexual health information, around years 6 and 7 at that important stage of transition from primary to secondary school.

Parents were aware that children and young people use technology, such as MSN, Facebook etc and understand that that this brings with it dangers such as 'cyber' bullying. Most parents wanted to be able to support their children to use technology safely and wanted to see more information about this maybe a national campaign.

Like children and young people, parents want to see their achievements positively promoted rather than always hearing about the 'bad' things that young people do, 95% of parents consulted felt they would like to see a Knowsley children and young people's publication to celebrate achievements and to highlight opportunities for children and young people to get involved in positive activities.

Children and Family Services in Knowsley have benefited hugely from increased investment in recent years. Approximately £240 million is spent on services for children, young people and families. As you would expect the bulk of resources goes on health professionals, teachers, family social workers, teaching assistants, nursery carers and the like, but Knowsley has also been successful in persuading Government to invest in a raft of new facilities. These include £2m in new play facilities, £160m on new Centres for Learning, £26m on 14 new Children's Centres, £40m additional investment in primary schools, £9.5m to invest in a new primary school, children and family centre and youth facility in Stockbridge Village, £5m to build a world class new youth centre in Huyton, £2m on the Firm Foundations Initiative designed to support young people through their GCSEs and over £2m to explore way in which child poverty can be tackled. The Knowsley Partnership has invested £2m to create apprenticeships for young people.

This is a record level of investment going into improving the lives of children, young people and families in Knowsley. Of course, the money has to make a difference and the Knowsley Partnership invests these huge sums to ensure that there are 'World Class' facilities at the heart of communities that deliver services to children, families and residents. It enables the health, education and social care professions to work closely together in communities to provide better services and deliver a coherent local response to the Every Child Matters agenda.

Where are we investing and why?



Every child and young person will interact to differing degrees as they progress towards adulthood. The Partnership's job is to make these interactions as positive and inspiring as possible so that we build self belief and unleash potential.

Services to children and young people should do what it says on the tin but of course there is much more to it than this. Services for children and young people benefit families and a wide variety of residents. Of course every member of a family will benefit from the good health or education of their children and every family will feel grateful to those dedicated professionals who cared for a child. We feel that supporting an individual child supports all, supporting one family supports all families and supporting one resident brings benefits to us all.

Children, young people and families have told us what they expect from staff they come into contact with and we have used this feedback to review our workforce development planning. This year we will publish 'People make it happen, a Workforce Strategy for people who support children, young people and their families across Knowsley (2009/11)'. The 5 key priorities are:

- Inspirational leaders and managers at all levels
- A workforce with the right knowledge, skills and attitude to meet and exceed the needs of children and young people every day
- Organisations which support workers
- Recognise and reward passion, excellence and commitment
- A children's workforce across Knowsley where people want to work

Who benefits from the services provided?

Infants and small children

In recent years we have seen the establishment of Children's Centres across the borough as well as a number of independent childcare providers. This enables us to bring together those services that are critical in the important first years. They also provide young children with the chance to meet and play with other children in safe and stimulating surroundings, helping their learning and development.

Of course young children benefit from the support provided to their parents and many of our services now help new mothers learn enhanced parenting skills that are important for nurturing healthy babies.

It is important that small children receive those vital immunisations against the illnesses that dogged the lives of their grandparents and great grandparents. We are now seeing more mothers than ever breastfeeding which is proven to improve the health of children as they grow older.

Recent national events have proven how very vulnerable the youngest children can be. On those occasions, when the authorities have to intervene to protect a young child, it is important to know that they are in good hands.

Children

It is important that children enjoy their primary school years and all the evidence we have from Ofsted inspections and listening to children is that our schools are happy thriving places. In schools children not only

learn but play, make friends, imagine and grow.

During these years children start to enjoy libraries and leisure facilities, learning to swim perhaps, playing with friends. Knowsley continues to invest in increasing amounts of after school activities for learning and play, better facilities and opportunities to participate in sport and culture, which we know rounds our young children and helps them discover things that they are good at and brings them increasing confidence and capability.

We also know that children are happiest in loving and caring families but there are times when children need to be outside the family home for their own wellbeing. Our services are there to deal sensitively with these difficult times.

Children need a lot of support during this stage to ensure they are healthy and well. Our services provide support such as health visitors, school health services.

Older children and pre-teens

Older children will clearly benefit from much of the support available to younger children, but as they move toward the end of primary school years their needs and outlook change. The transition between primary and secondary is a critical time for children and increasingly marks a turning point in young people's lives as they become 'pre-teens'. Over many years schools across the borough have worked closely together to ensure this transition is smooth and supportive.

Young teenagers

This is the age at which young people can go through the most change in terms of physical and emotional needs, and often as they experience growing independence they need more specific support and resources. This is why so many tailored services are targeted at this age group. As young people grow it is important they receive appropriate support through sex education and personal health advice and additional resources to ensure that they can grow safe from harm in a nurturing environment that encourages positive personal growth.

Apart from schools, with their range of learning, sporting and cultural activities, there exists a range of local clubs, many of which are supported by the Partnership, which provide things to do and places to go. There are youth clubs and youth workers across the borough and the new Centres for Learning will be opened during the evenings and weekends for a whole range of activities.

On the less positive side, anti social and criminal behaviour among young people is more widespread than all of us would like and significant time and energy is spent by the likes of the Youth Offending Service, Youth Justice Service, outreach youth workers, Fire Service and Police, to support the community and the young people themselves.

Older teenagers

Older teenagers continue to benefit from many of the services they used as younger teenagers, from 14 onwards young people start to make choices which will inform their life to come. The schools and the colleges have worked enormously hard in recent years to widen out the types of courses and qualifications that young people can access with a stronger emphasis on vocational options. This year the council, with the active support of a range of agencies including local businesses, has also worked to introduce an apprenticeships scheme and the Connexions Service provided life and career advice focused on this age group.

These can also be difficult years for those who feel that they exist outside the system and too many fail to achieve their potential and live lives unfulfilled. Too many turn to drugs, alcohol and crime and many of our services are devoted to solving the problems of these young people. Also, the borough has high rates of teenage pregnancy and this group, especially in parts of the borough which are hard pressed, are vulnerable to falling pregnant earlier than they would like. Our services are very active in this area of work.

Families

The services provided by the Partnership are increasingly focused around the needs of the family. Children's Centres support the needs of the child and its family with a particular focus around health and wellbeing. Schools themselves are offering much more in the way of support to families through school/family liaison staff, through classes in cooking and helping parents to help their children get on at school. Projects are springing up across the borough focused around the needs of whole families where members of the community help to mentor other families that are struggling to cope. Within our new Centres for Learning there are plans to establish parents' forums, establishing stronger local accountability for schools.

We are changing the way that we deliver our children's social care services so that we focus on assessing the needs of families in a comprehensive and timely fashion, support those parents who are struggling to cope to care for their children safely and where this is not possible to ensure that children are placed in alternative family settings wherever possible.

Through our 'Aiming High for Disabled Children' programme we are working closely with parents, carers and disabled children to plan and develop new services that will better meet their needs; more 'short breaks', more family activities, activities for young people and support for parents.

Residents

There has been a drive over many years to make our 'institutions' more accessible to the public - more warm, friendly and inviting. The message this sends to our residents is that these are places where you are welcome to learn, to have fun.

The best example of this is our new Centres for Learning which will be open to residents every evening, on weekends and during school holidays. We expect them to be well used by local sports clubs, local societies, community activities, for arts and drama and a host of things people are yet to think of.

Knowsley's children and young people deserve the best support we can offer so that they become confident, creative and caring citizens of the future. This responsibility is shared between parents, families, communities, voluntary groups and people employed to support children and young people. Our Plan aims to address those areas where, through talking and listening to people, change is needed in order to improve the wellbeing and life chances of children and young people in Knowsley and establish Knowsley as the borough of choice.

Conclusion



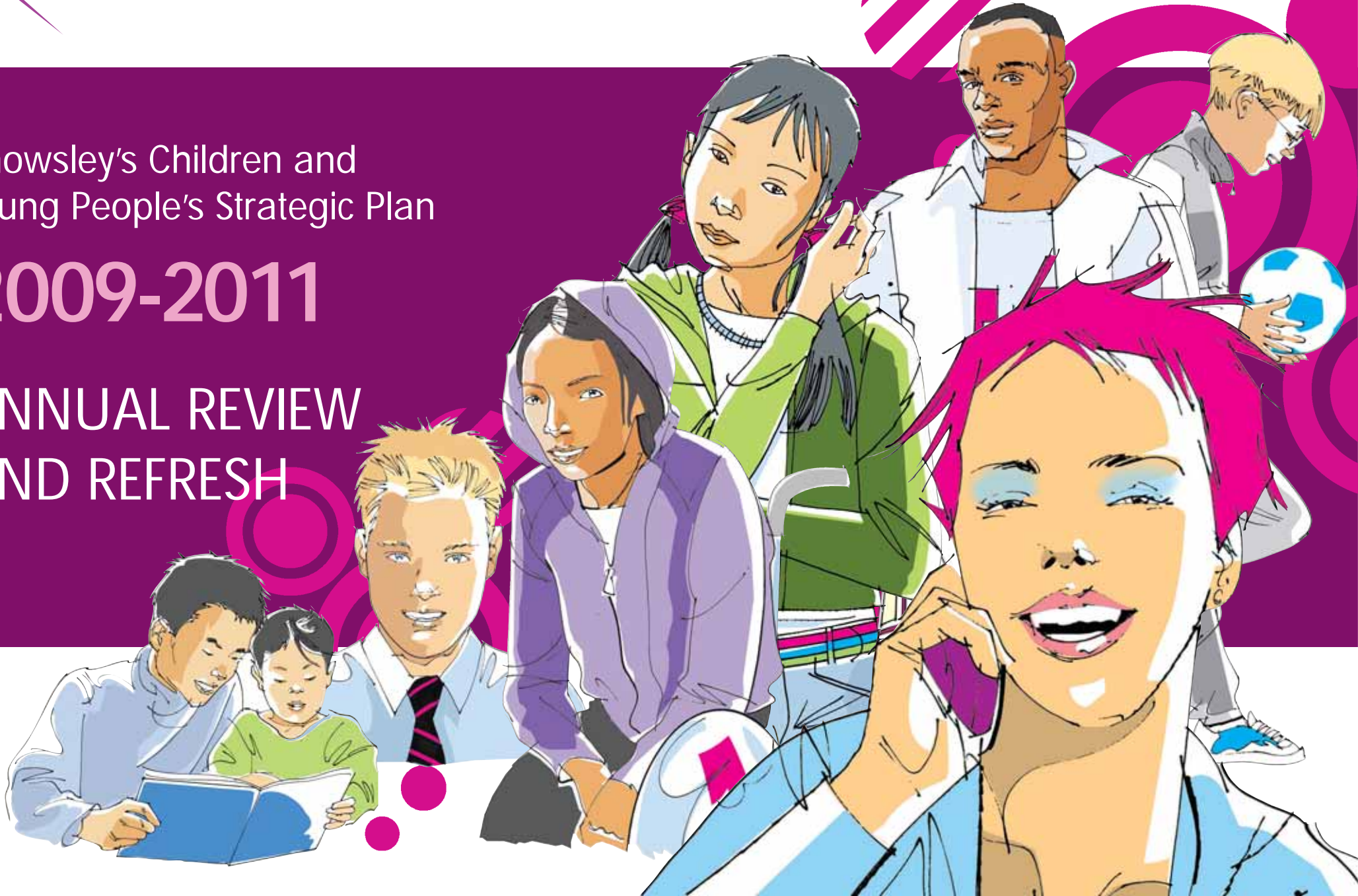


Knowsley Children
and Young People's
Services

Knowsley's Children and
Young People's Strategic Plan

2009-2011

ANNUAL REVIEW
AND REFRESH



Delivery Plan	30	Children and young people are positively engaged and contributing in their communities	67
Introduction	31	Young people, by the age of 19, achieve economic well-being through choice	71
Children and young people maximise their health potential	33	Improved overall outcomes for the most vulnerable children and young people: children with disabilities and children looked after	75
Children and young people make positive choices in relation to risk taking behaviour	39		
Children and young people are safe in their families and communities	43		
Children are ready for school	49		
Improved and sustained educational attendance and attainment	55		
High quality informal learning, cultural and sporting opportunities available for children and young people both inside and outside school	61		

Contents



Delivery plan

Quality Assurance Certificate (applicable to all DCFS/CYPP action plans)	
Purpose of plan This delivery plan sets out the partnership's priorities and how they will be delivered in the period from 1st April 2009 to 31st March 2011	
Suitability: Will the plan achieve this purpose?	Y
Feasibility: Are the actions/deadlines achievable?	Y
Acceptability: Do the actions accord with the council's/Partnerships values and policies?	Y
Review/evaluation and reporting process	Frequency
Performance against the targets contained in this plan will be reviewed by the CYP Performance Management Group and reported to the CYP Executive.	Quarterly
Name of certifying person or body	Date
CYP Executive	19/05/09

The context for this delivery plan is described in the 2009/10 review of Knowsley's Children and Young People's Strategic Plan.

Action plans are organised around a framework of nine priority outcomes:

1. **Children and young people maximise their health potential**
2. **Children and young people make positive choices in relation to risk taking behaviour**
3. **Children and young people are safe in their families and communities**
4. **Children are ready for school**
5. **Improved and sustained educational attendance and attainment**
6. **High quality informal learning, cultural and sporting opportunities available for children and young people both inside and outside school**
7. **Children and young people are positively engaged and contributing in their communities**
8. **Young people, by the age of 19, achieve economic wellbeing through choice**
9. **Improved overall outcomes for the most vulnerable children and young people**

Children looked after and children with disabilities have been identified as the focus for support under priority outcome nine for the period up to 31 March 2011.

This plan has been informed by:

- A review of latest performance data and impact during 2007/08
- A thorough assessment of the statistics, data, analysis, evidence, research, and local intelligence
- Engaging with and listening to what children, young people, families and staff have told us
- An evaluation of the external assessment of our performance from inspection information and
- The identification, through multi agency engagement, of areas where most improvement is needed, using an outcomes based approach



Introduction

This plan has been developed with the participation at every stage of children, young people and families. Through the development of the Children and Young People's Needs Assessment 2009, a review of all recent consultations and engagement events was undertaken to consider specific and common themes. In addition, alongside the planning workshops, the Knowsley Young Advisers conducted consultation with children and young people, and a range of services conducted feedback with parents and carers. A summary of their feedback is contained in the needs assessment and has been used to inform the areas or focus for 2009/11. The areas for improvement identified for priority outcome nine children looked after, have been developed through work with MADE, (Making a Difference Everywhere), the voice of children and young people looked after, who have articulated their views in the development of the Knowsley Children Looked After Pledge.

Each outcome has an accountable owner and each action has an identified lead agency responsible for ensuring that progress is made. The plan will be monitored quarterly by the Children and Young People's Performance Management Group, and reported by exception to the Children and Young People's Executive as part of its business cycle. All Partners within the Children and Young People's Partnership will ensure that business plans are aligned to the delivery of the agreed priorities, so that as a Partnership we are clearly focusing on those areas where we need to make the most improvement. In addition the partnership will:

- Continue to drive integrated working at a local level, transforming the delivery of services in local areas and exploiting the potential of hubs of delivery such as Centres for Learning and Children's Centres, and further embedding tools and processes such as the Common Assessment Framework, Lead Practitioner and ContactPoint
- Ensure that we develop creative ways of working; using the Child Poverty programme to innovate to find sustainable solutions
- Invest in community based solutions, harnessing the skills and talents of local people to drive change
- Use evidence based approaches informed by a more thorough understanding of need and context
- Value the rights of children and young people across the Partnership and embed a culture of participation and engagement in service design

The priorities agreed in this plan will form the basis for the Children and Young People's Joint Commissioning Strategy due to be published in the autumn, which will align the resource decisions of the Partnership to the priorities identified in this plan.

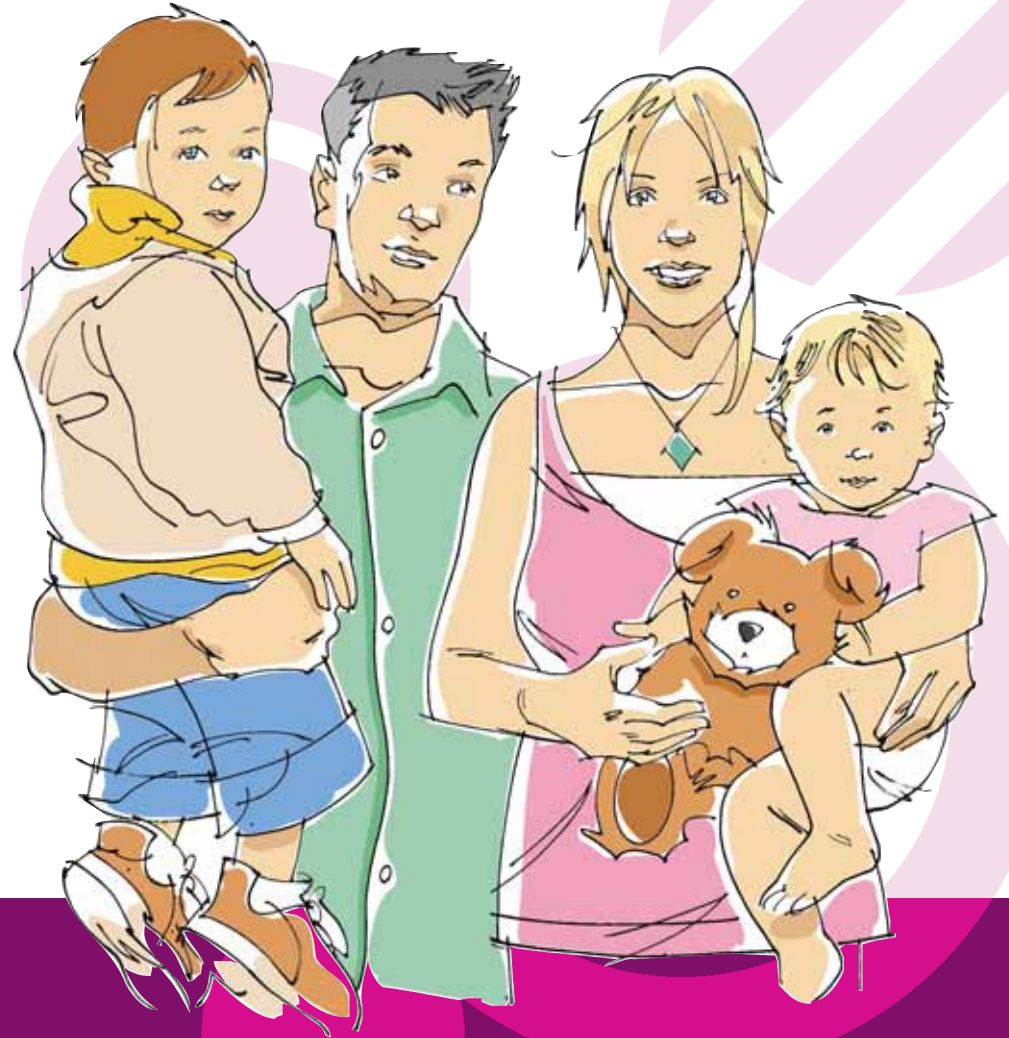
Current outcomes

The infant mortality rate in Knowsley has fallen from a high of 7.2 deaths per 1,000 live births in 1997/99 to 4.2 deaths per 1,000 live births in 2005/07. This rate is markedly lower than it is regionally and nationally and has been so for four successive years. The rate in the most deprived areas of Knowsley is over double that in the least deprived quintile (7.7 and 3.6 per 1,000 live births respectively). The proportion of babies born in Knowsley who are deemed to be underweight was 8.0% in 2005/07, significantly above the north west (7.9%) and England (7.7%) rates.

Breastfeeding rates in Knowsley are improving but are still significantly below the average rates for the north west and England. Q4 2008/09 saw a Knowsley breastfeeding initiation rate of 42%, however only 21.2% of babies are still breastfed at 10-14 days and 13.5% are fully or partially breastfed at six weeks. There is wide variation in breastfeeding continuation rates across the borough with the most deprived area having the lowest breastfeeding rates at both 10-14 days and six weeks.

In England during 2007/08, 14.5% of mothers were classified as being smokers in the 12 months before or during pregnancy. Data for Knowsley in Quarter 3 2008/09 shows that just under a quarter of all women were classed as being smokers at time of delivery.

There has been little overall change in the number of women smoking at the time of delivery since 2005/06.



**Children and young people
maximise their health potential**

MMR immunisation amongst the 24 month cohort is often used as an indicator of all childhood immunisation rates. Immunisation uptake amongst this cohort has improved in recent years but the increase is not yet robust. The proportion of children from Knowsley who had received their MMR immunisation in 2007/08 was 84.2%. This was marginally lower than the uptake in England (84.6%) as well as being lower than regional levels (86.7%). The annual figure for 2008/09 is 87.3% and is the highest figure attained in Knowsley since records began. This compares with 86.9% for the north west region. In 2007/08, 12.0% of reception year pupils and 20.1% of Year 6 pupils were classified as obese (National Child Measurement Programme, 2008). In Knowsley this represents a reduction from 13.1% in 2006/07 at reception age and an increase from 18.2% in 2006/07 at Year 6. Knowsley is in the bottom quartile nationally for the percentage of people in reception and school Year 6 who are obese.

At reception stage the prevalence of obesity does not strictly follow the expected pattern of deprivation levels linked to higher rates of obesity. Longview and Kirkby Central are areas that have higher deprivation but low obesity rates and Swanside, Roby and Whiston North feature as areas that have lower deprivation but higher obesity rates.

The prevalence of obesity at Year 6 also does not strictly follow the expected pattern of deprivation levels linked to higher rates of obesity. Stockbridge and Kirkby Central are areas that have higher deprivation but low obesity rates and St Bartholomew's and Whiston North feature as area that have lower deprivation but higher obesity rates.

The latest robust data available pertaining to children's dental health is from 2005/06. Data from the 2005/06 survey tells us that 59% of five year olds had untreated tooth decay. This suggests that not all children visit a dentist for treatment.

Exams and tests were considered to be the greatest cause of worry for males and females across years 6, 8 and 10. Generally, female pupils across all age groups and all years worried more about issues than their male counterparts. National prevalence estimates suggest that across the 5 – 16 year old age group in Knowsley, 1264 children will have a conduct disorder and 1025 will have an emotional disorder.

A Health Equity Audit of access to CAMHS service has recently been undertaken and an updated comprehensive needs assessment is underway.

Health issues relating to smoking, alcohol and drug abuse are managed under priority outcome 2.

Priorities for improvement

The priorities for children and young people's health in Knowsley are:

- Maternal health and early years
- Healthy weight
- Understanding of children and young people's mental health in Knowsley

Delivery plans

Priority for improvement			
Maternal health and early years			
Outcome measures	Baseline	2009/10 target	2010/11 target
Breastfeeding initiation rate	31.5% (2007/08)	39%	41%
Babies being breastfed at 10-14 weeks	17.8% (2007/8)	21.8%	23.8%
NI 53: Breastfeeding at 6-8 weeks	13.4% (Q4 2008/09)	14.7%	18.7%
Percentage of women smoking in pregnancy	25.6% (Q4 2008/09)	24.8%	22.8%
Take-up of MMR immunisation at 24 months	81.9% (2007/08)	92%	95%
Immunisation rate for Diphtheria, Tetanus, Polio, Pertusis, Hib at 5 years	74.9% (2007/08)	92%	95%
Implementation strategies	Status		
Infant Feeding Strategy 2008/11	In place		
Healthy Weight Strategy	In place		
Oral Health Strategy	In place		
Maternal Health Strategy	Under development		
Tobacco Control Strategy 2007/10	In place		
Commissioning Strategic Plan	In place		
Childhood Immunisation Improvement Action Plan	In place		

High level actions	Lead agency
Social marketing of breastfeeding across North Mersey PCTs	Directorate of Children and Family Services
Implement the Infant Feeding Strategy focusing on progress towards UNICEF Baby Friendly Community Accreditation	Health and Wellbeing
Commissioning of a Paid Peer Support service for breastfeeding	Directorate of Children and Family Services
Public Health Development Midwifery provision across the borough	Directorate of Children and Family Services
Family Nurse Partnership Pilot 2010/13	Directorate of Children and Family Services
Work with partners to develop and implement comprehensive pathway to identify and support women to help them quit smoking in pregnancy and to stay quit	Health and Wellbeing
Sustain current improved MMR uptake rates in Knowsley and target areas with lowest uptake figures	Health and Wellbeing
Social marketing of childhood immunisation in Knowsley	Health and Wellbeing
Roll out of fit for purpose Childhood Health information technology system in Knowsley	Health and Wellbeing

Priority for improvement			
Healthy weight and dental health			
Outcome measures	Baseline	2009/10 target	2010/11 target
NI 56: Obesity in primary school age children in Year 6	21% (2007/08)	20.3%	20%
Average number of decayed, missing or filled teeth per child	3.02 (2005/06)	Not measured until 2010/11	2.79

Implementation strategies	Status
Energise Knowsley - Healthy Weight Strategy 2009/12	In place
Healthy Schools Business Plan	In place
Infant Feeding Strategy	In place
SPAA Action Plan	In place
Play Strategy	In place
Commissioning Strategic Plan 2008/12	In place
Dental Commissioning Strategy	In place
Oral Health Improvement Plan	In place
High level actions	Lead agency
National child weighing and measuring programme	Health and Wellbeing
Healthy Schools programme	Directorate of Children and Family Services
Increase uptake of healthy meal options in schools	Directorate of Children and Family Services
To increase fruit and vegetable consumption amongst adults and children	Health and Wellbeing
To increase the number of excellent or good standard play spaces	Directorate of Neighbourhood Services
No. of schools with travel plans, to increase number of children walking/cycling to school	Directorate of Regeneration, Economy and Skills
Support the Strategic Health Authority processes leading to public consultation around fluoridation of water supply	Health and Wellbeing
Delivery of fluoride toothpaste to under 5s population through supervised tooth brushing and 'take home' schemes	Health and Wellbeing
Sustain current fluoride milk scheme in Knowsley primary schools	Health and Wellbeing
Increased delivery of evidence based preventive care to child patients attending Knowsley dentists	Health and Wellbeing
Increase the number of Knowsley children attending local dental practices (for preventive dental care)	Health and Wellbeing

Priority for improvement			
Develop comprehensive pathways for recently commissioned CAMHS posts targeting young offenders and children and young people experiencing domestic abuse, paying particular attention to early intervention			
Outcome measures	Baseline	2009/10 target	2010/11 target
NI 51: Effectiveness of CAMHS (PSA 12 aggregate assessment against proxy indicators)	15	15	16
Number of children receiving treatment from CAMHS in YOS and domestic abuse services	0 (New service)	50	75
Implementation strategies	Status		
Emotional Health and Wellbeing Plan 2010	Currently in development - to ensure sufficient investment and robust pathways across Tier 1 - Tier 4 CAMHS		
Prevention and Early Intervention Strategy	To be developed		
High level actions	Lead agency		
Develop sub-regional core Tier 3 CAMHS specification (5 BP footprint) with local variations specific to Knowsley (includes children looked after)	Health and Wellbeing and CAMHS Partnership Board		
Develop robust performance and contract monitoring framework for Tier 3 specification	Health and Wellbeing and CAMHS Partnership Board		
Progress Commissioning Strategic Plan investment into Youth Offending Service and Domestic Violence service to meet the emotional health and wellbeing needs of these vulnerable groups, including re-engineering service pathways and protocols	Health and Wellbeing		
Review the level of CAMHS support to children and young people with learning disabilities and mental health issues via the Aiming High for Disabled Children Programme	Directorate of Children and Family Services and Health and Wellbeing		

Current outcomes

The under 18 conception rate in Knowsley (52.7 per 1,000) is significantly above that in England (41.7 per 1,000). There has been a 3.9% reduction in the under 18 conception rate in Knowsley between 1998 (54.8 per 1,000) and 2007 (52.7 per 1,000), compared to a 10.7% reduction in England. To achieve the 2010 target, a further 48.0% reduction is required in the Knowsley rate (approximately 16% per year).

Conception rates across Knowsley range from 18.5 per 1,000 to 82.3 per 1,000. Areas with high conception rates tend to be the same as those with high levels of social deprivation. In Knowsley, areas of Kirkby and Huyton experience the highest levels of teenage conceptions. The gap between conception hotspot areas within Knowsley and the borough as a whole declined by 46.2% between 2000/02 and 2004/06. The conception rate for North Kirkby (60.1 per 1,000) in 2004/06 was significantly above the overall Knowsley rate for the same period (44.7 per 1,000). Knowsley has the highest abortion rate in the North West (24.2 per 1,000).

Local levels of binge drinking in children and young people are on the increase. This mirrors what is happening nationally. For females in the 16-24 age group binge drinking has doubled from 15% in 1988 to 30% in 2008. The Knowsley Health and Wellbeing for All Joint

Strategic Needs Assessment identifies the key feature that young people in 2007 who drink are consuming significantly more alcohol than their 1990 counterparts. The number of units drunk has nearly doubled to an average of 10-11 units per week.

Smoking prevalence has reduced for all age groups between 1999 and 2007; this reduction is by 2-3% for all groups. Year 6 pupils who smoke had declined from 3% for males and 2% for females in 1999 to only 1% in 2007.

Living in a household where they are exposed to smoke carries with it some of the inherent risks of tobacco also for young people. 52% of primary school pupils said that at least one person smoked inside their home 'on most days'. There has been a reduction in the number of pupils in all age groups reporting that someone had smoked in their home on most days. A higher proportion of primary school pupils in North Kirkby (68%) and North Huyton (64%) reported someone smoking within their homes 'on most days'.

Year 8 males saw an increase in the proportion stating that they had taken drugs between 2005 and 2007; for those who had taken them in the last month, last year and ever. This is particularly prominent in Year 8 males in 2007 who said they had ever taken drugs which rises to 17%.

**Children and young people make positive choices
in relation to risk taking behaviour**

Priorities for improvement

Focus up to 2011 will be on:

- Reducing teenage pregnancy rates
- Reducing the number of children and young people involved in substance misuse (inc. alcohol)
- Reducing the number of children and young people who smoke

Delivery plans

Priority for improvement			
Reduce teenage pregnancy rates			
Outcome measures	Baseline	2009/10 target	2010/11 target
NI 112: Under 18 conception rate	54.83 per 1,000 (1998)	33.99 per 1,000	30.70 per 1,000
Implementation strategies	Status		
Teenage Pregnancy Strategy	In place		
Child Health Strategy	Being developed (Autumn 2009)		
High level actions	Lead agency		
Develop intelligence base to support prevention and improved support for teenage parents	Health and Wellbeing		
Improve effectiveness of PSHE and SRE in schools on preventing teenage pregnancies	Directorate of Children and Family Services		
Systematically roll out contraceptive training (LARCs) in Knowsley	Health and Wellbeing		

Priority for improvement

Reducing the number of children and young people involved in substance misuse (inc. alcohol)

Outcome measures	Baseline	2009/10 target	2010/11 target
NI 115: Substance misuse by young people	10.6% (2008/09)	9.1%	7.5%
Percentage of secondary age pupils reporting having drunk alcohol within the last seven days	34% (2007/09)	32%	30%
Percentage of secondary age pupils reporting ever having taken illegal drugs	11% (2008)	10%	9%
Implementation strategies	Status		
Drug and Alcohol Strategy	In place		
Child Health Strategy	Being developed (Autumn 2009)		
High level actions	Lead agency		
Social marketing campaign led by Young Advisors to raise awareness of risks focused on Centres for Learning	Directorate of Children and Family Services		
Develop swift and easy access and clear referral pathways through Tier 1 - 4 and across adult services for young people through co-ordinated relevant service delivery	Directorate of Children and Family Services		
Research predicting factors for 'risk taking behaviour' to enable us to target specific cohorts or geographical areas for intensive intervention work	Directorate of Children and Family Services		
Development of workforce and resources to ensure capability of delivery of alcohol awareness curriculum across services	Directorate of Children and Family Services		
Early intervention through work with children of primary school age and parents	Directorate of Children and Family Services		
Access to online health information e.g. Teen Life Check, THINK website	Directorate of Children and Family Services		
Trading Standards to target reducing underage sales	Directorate of Corporate Resources		

Priority for improvement			
Reducing the number of children and young people who smoke			
Outcome measures	Baseline	2009/10 target	2010/11 target
Proportion of female Year 10 pupils reporting having smoked within the last seven days	16% (2007/09)	14%	12%
Proportion of male Year 10 pupils reporting having smoked within the last seven days	8% (2007/09)	7%	6%
Proportion of female Year 8 pupils reporting having smoked within the last seven days	5% (2008)	4.5%	4%
Proportion of male Year 8 pupils reporting having smoked within the last seven days	7% (2008)	6%	5%
Implementation strategies	Status		
Child Health Strategy	Being Developed (Autumn 2009)		
Tobacco Control Strategy 2008/10	In place		
Commissioning Strategic Plan	In Place		
High level actions	Lead agency		
Social marketing campaign led by young people to raise awareness of risks associated with smoking to be focused on Centres for Learning	Directorate of Children and Family Services		
Wider screening and referral of young people into smoking cessation services	Health and Wellbeing		
Work with Trading Standards to reduce underage sales and sales of tobacco from private addresses	Directorate of Children and Family Services		
Access to online health information e.g. Teen Life Check, THINK website	Directorate of Children and Family Services		

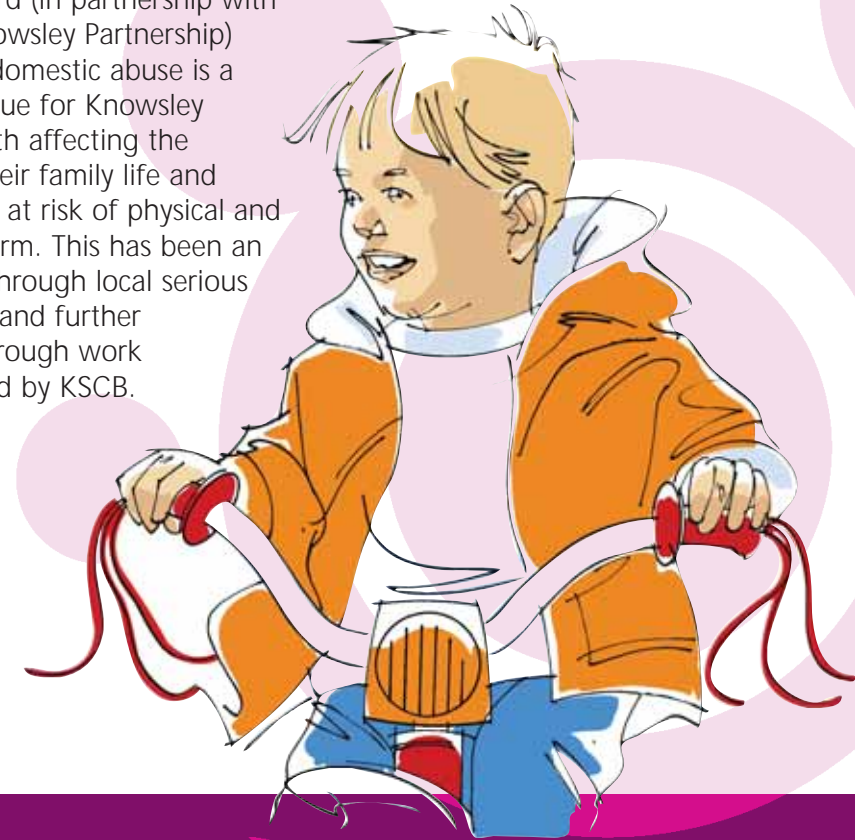
Current outcomes

We need to get better at identifying children with additional needs and undertaking appropriate assessments on the continuum from the Common Assessment Framework (CAF) to referrals for initial and core assessments undertaken by Children's Social Care but with contributions from other agencies. Our evidence tells us that we need to embed CAF across all agencies, improve the quality of all referrals and assessments and improve the timeliness of initial and core assessments.

We have put in place many improvements locally in our children's social care (child protection and family support services) over the last 18 months following the recommendations of the Joint Area Review in 2007. However, events at a national level in Haringey and the subsequent Government and Ofsted responses and the review undertaken by Lord Laming, reinforce the need to maintain this area as a focus of local work, particularly from the perspective of the quality of risk assessment and investigation, the co-ordination of support to children subject to a child protection plan and the support offered once a child protection plan is no longer in place. We know that we need to look more closely at how we identify and work together to minimise the risk of neglect. These are multi-agency issues.

In addition, Knowsley's Safeguarding Children Board needs to ensure that each agency has a robust approach to safeguarding and child protection and that robust scrutiny and challenge is applied.

Work undertaken by the Knowsley Safeguarding Children Board (in partnership with the Safer Knowsley Partnership) tells us that domestic abuse is a significant issue for Knowsley children - both affecting the stability of their family life and placing them at risk of physical and emotional harm. This has been an issue raised through local serious case reviews and further evidenced through work commissioned by KSCB.



**Children and young people are safe
in their families and communities**

Evidence in respect of the incidence of bullying is mixed and at times contradictory (possibly as a result of the nature of the evidence gathering). However, we know both from Government 'sampling' and from our local evidence gathering that whilst Knowsley may seem to compare favourably to some other areas, bullying is still a significant issue for our young people and for their parents and carers. We know that internet bullying is increasing and we believe there is a clear link between bullying, fear of crime, young people as victims of crime and violent crime.

The incidence of children killed or seriously injured on the roads is reducing in Knowsley and we are on track to achieve the national target.

The rate of admission of Knowsley children to hospital following injuries is reducing (from 250 at the beginning of 2007/08 to 123 in the 3rd quarter of 2008/09).

Priorities for improvement

We have agreed the following as priorities for continued improvement:

- Consistently high quality identification, referral and assessment of children with additional needs
- Quality of assessment, planning and implementation of support where neglect or abuse is suspected
- Multi-agency approaches to families where domestic abuse is an issue and children are present
- To develop a strategic approach to reducing the incidence of bullying and put in place a range of effective approaches

Delivery plans

Priority for improvement			
Consistently high quality identification, referral and assessment of children with additional needs			
Outcome measures	Baseline	2009/10 target	2010/11 target
Number of CAF assessments completed	219	Increase by 20%	Increase by 20%
Percentage of CAF assessments meeting minimum quality standards		50%	75%
Implementation strategies	Status		
Knowsley Safeguarding Children Board Business Plan	In place		
Children's Social Care Business Plan	In place		
CAF Implementation Plan	Under development		
High level actions	Lead agency		
Embed the CAF within the practice of all agencies ensuring synergy with specialist assessments	Directorate of Children and Family Services		
Implement revised service delivery arrangements (area based/specialist) for children's social care	Directorate of Children and Family Services		

Priority for improvement			
Quality of assessment, planning and implementation of support where neglect or abuse is suspected			
Outcome measures	Baseline	2009/10 target	2010/11 target
To be agreed once new National Indicators and statutory targets are introduced			
Implementation strategies	Status		
Knowsley Safeguarding Children Board Business Plan	In place		
Children's Social Care Business Plan	In place		
A multi-agency strategy to protect children at risk of harm (the implications for Knowsley arising from Lord Laming's Review of the 'Protection of Children in Knowsley' and other work undertaken locally)	In development		
High level actions	Lead agency		
Implement revised service delivery arrangements (area based/specialist) for children's social care	Directorate of Children and Family Services		
Improve frontline child protection practice across agencies	Directorate of Children and Family Services		
Commission a piece of work to develop a multi-agency effective practice approach to children experiencing neglect. Work to include identifying outcome measures against which impact can be measured	Directorate of Children and Family Services		
Review membership and structure of KSCB and relationship with LSP and other thematic partnerships to ensure effective challenge and support	Directorate of Children and Family Services		

Priority for improvement			
Multi-agency approaches to families where domestic abuse is an issue and children are present			
Outcome measures	Baseline	2009/10 target	2010/11 target
This is a development issue where outcomes cannot directly be measured, therefore progress of these activities will be measured and reported.			
Implementation strategies	Status		
Domestic abuse strategy	In place		
High level actions	Lead agency		
Cross partnership Strategic Group established to drive forward Knowsley wide Domestic Abuse Strategy	Knowsley Safeguarding Children Board		
Recognition of impact of Domestic Abuse on children and young people	Knowsley Safeguarding Children Board		
Development of Information Exchange protocols at all levels	Knowsley Safeguarding Children Board		
Multi-Agency Training Strategy	Knowsley Safeguarding Children Board		

Priority for improvement			
To develop a strategic approach to reducing the incidence of bullying and put in place a range of effective approaches			
Outcome measures	Baseline	2009/10 target	2010/11 target
Percentage of primary pupils reporting that they felt afraid to go to school because of bullying at least sometimes	26% (2008)	24%	22%
Percentage of secondary pupils reporting that they felt afraid to go to school because of bullying at least sometimes	22% (2008)	20%	18%

Implementation strategies	Status
Knowsley Safeguarding Children Board Business Plan	In place
A multi-agency strategy to protect children at risk of harm (the implications for Knowsley arising from Lord Laming's Review of the 'Protection of Children in Knowsley' and other work undertaken locally)	In development
High level actions	Lead agency
Develop an integrated whole system response to bullying, within schools and other settings, families and communities - including recording and reporting?	Directorate of Children and Family Services
Define LA roles and responsibilities - including operational aspects, training and development, co-ordination, central point of contact? (individual or team or school?)	Directorate of Children and Family Services
A specific focus on vulnerable children, with particular reference to strategies to protect children and young people affected by racist, homophobic or disabilist bullying	Directorate of Children and Family Services
Community awareness raising about the incidence, pathology and impact of bullying	Directorate of Children and Family Services
Action to promote e-safety and to tackle internet / mobile phone / cyber bullying	Directorate of Children and Family Services
Promote and publicise Knowsley's Anti Bullying strategy and actions (marketing and communication)	Directorate of Children and Family Services

Additional Local Area Agreement target

Outcome measures	Baseline	2009/10 target	2010/11 target
NI 64: Child Protection Plans lasting 2 years or more	17.3% (2006/07)	8%	6%

Current outcomes

The outcomes of the Local Authority Childcare Sufficiency Assessment (CSA) March 2008 outlined the priorities for the Local Authority in relation to the provision of childcare in the borough these include:

- A full review of the early years free offer for three and four year olds to ensure that the extended and flexible offer meets parental demand, whilst reducing surplus places across all areas of the borough; in particular in the maintained sector
- Monitoring market forces and vacancies to ensure that there is sufficient childcare 0-19 years to meet customer and beneficiary need; particular attention is given to the South Huyton, South Kirkby and Whiston/Prescot Partnership areas where there is potential customer led demand. Close monitoring of the supply and demand in the Cronton, Knowsley Village and Stockbridge areas are in place, as there is limited choice for parents in those areas
- The creation of childcare places has been prioritised where there is potential beneficiary-led demand; the areas identified in the CSA in particular are in the North Huyton and North Kirkby Partnership areas
- Partnership working with Extended Schools and the Play Service are in place to meet the demand for provision for older children

- Consultation with customers, potential customers and beneficiaries will take place; particular focus will be placed on the minority groups across the borough. Targeted work will then be undertaken with the PVI and maintained sector to ensure demand is met
- The implementation of Aiming High for Disabled Children will ensure that those families who have children with disabilities will be supported to access childcare provision
- The development and implementation of the Family Information Service to ensure a cohesive information service is available to all families.



Children are ready for school

The achievement of Knowsley children at the Foundation Stage has risen rapidly in recent years and is now better than the national average. This has been achieved while also narrowing the gap between the lowest achieving 20% and the rest. However, statutory targets for narrowing this gap have been set at a very ambitious level and have not been achieved.

The percentage of Private and Voluntary Early Years sector providers judged by Ofsted to be good/outstanding is below the national average.

Priorities for improvement

Our focus in the period 2009/11 will be on:

- Sufficiency and accessibility of early years and childcare provision
- Narrowing the gap in achievement between the lowest achieving 20% of 5 year olds and the rest
- Improving the quality of private and voluntary early years settings



Delivery plans

Priority for improvement			
Sufficiency and accessibility of early years and childcare provision			
Outcome measures	Baseline	2009/10 target	2010/11 target
Percentage of childcare places that are vacant	28% (March 2009)	27%	26%
Implementation strategies	Status		
Early Years Workforce Development Strategy	In place		
Childcare Sufficiency Assessment and Action Plan	In place		
Future Schooling in Knowsley Strategy	In place		
High level actions	Lead agency		
Implement the targeted 2 year old offer	Directorate of Children and Family Services / PV childcare sector		
Implement the Aiming High for Disabled Children Programme	Directorate of Children and Family Services / PV childcare		
Implement the universal extension to the free offer for 3 and 4 year olds	Directorate of Children and Family Services / Schools / PV providers		
Implement a single funding formula for the 3 and 4 year old offer	Directorate of Children and Family Services / Schools Forum		
Review progress with CSA action plan six monthly and undertake full re-assessment of childcare sufficiency by March 2011	Directorate of Children and Family Services		
	Continued		

High Level Actions	Lead Agency
Implement an Accredited Childminder Network	Directorate of Children and Family Services / Private childcare providers
Support sector to have an Early Years Professional (EYP) in every Private or Voluntary setting	Directorate of Children and Family Services / Private or Voluntary providers
Family Information Service (FIS) implemented, incorporating the Childcare Information Service	Directorate of Children and Family Services

Priority for improvement			
Narrowing the gap in achievement between the lowest achieving 20% of 5 year olds and the rest			
Outcome measures	Baseline	2009/10 target	2010/11 target
NI 92: Narrowing the gap between the lowest achieving 20% in the Early Years Foundation Stage Profile and the rest	30% (2008)	24.9% (2009)	23.33% (2010)
Implementation strategies	Status		
Local Authority Moderation Plan	In place		
Communication Language and Literacy Development (CLLD) Programme	In place		
Every Child A Talker (ECAT)	In place (National Strategies programme)		
Inclusion Development Programme	In place (National Strategies programme)		
'Family Reading Matters' Strategy	To be developed		

High Level Actions	Lead Agency
Implement universal and targeted visits to settings to support the progress and achievements of children vulnerable to underachievement	Directorate of Children and Family Services / School / PV sector
Improve the use of data to target children vulnerable to underachievement	Directorate of Children and Family Services / Schools / PV sector
Continue to implement the National Strategies CLLD programme and Knowsley's Early Literacy for Families programme in targeted schools and the National Strategies CLLD, Phase 1 Letters and Sounds, programme in the Private and Voluntary sector. Introduce the ECAT programme in targeted settings from April 2010	Directorate of Children and Family Services / Schools / PV sector
Improve the quality of the enabling environment outdoors in Full Daycare Private and Voluntary/Children's Centre settings and in the home environment for Childminders	Directorate of Children and Family Services / PV sector
Support settings to follow boys' interests in order to ensure that the play environment supports and promotes the learning and development of boys	Directorate of Children and Family Services / Schools / PV sector
Improve children's levels of wellbeing and engagement	Directorate of Children and Family Services / Schools / PV sector
Support settings to use CAF processes effectively to further develop inclusive practice	Directorate of Children and Family Services / Schools / PV sector
Parent Support Workers, Children's Centres and Schools continue to promote attendance with parents/carers and families	Directorate of Children and Family Services / Schools

Priority for improvement			
Improving the quality of private and voluntary early years settings			
Outcome measures	Baseline	2009/10 target	2010/11 target
Percentage of childminders judged by Ofsted to be good or better	51.5% (Q1 2009/10)	55%	61%
Percentage of non-domestic childcare settings judged by Ofsted to be good or better	56% (Q1 2009/10)	63%	70%
Implementation strategies	Status		
Early Years Quality and Development Service Review process for Private and Voluntary settings	In place		
Early Years Workforce Development Strategy	In place		
High level actions	Lead agency		
Review the Knowsley review process in order to support and challenge Childminders and Non-Domestic settings	Directorate of Children and Family Services / PV sector		
Support the sector to have an Early Years Professional (EYP) in every Full Daycare Private or Voluntary setting	Directorate of Children and Family Services / PV sector		
Support Private or Voluntary settings and childminders to undertake effective self evaluation using the Ofsted Early Years Foundation Stage framework	Directorate of Children and Family Services / PV sector		
Improve the quality of the enabling environment outdoors in Full Daycare Private and Voluntary/Children's Centre settings and in the home environment for Childminders	Directorate of Children and Family Services / PV sector		

Additional Local Area Agreement target

Outcome measures	Baseline	2009/10 target	2010/11 target
NI 72 Achievement of at least 78 points across the Early Years Foundation Stage with at least 6 in each of the scales in Personal, Social and Emotional Development and Communication, Language and Literacy	50% (2008)	43% (2009)	55.8% (2010)

Current outcomes

Primary attendance

- Unauthorised absence is rising faster than national or statistical neighbours - large and widening gap

Key stage 1

- Need to sustain improvement in reading
- Need to accelerate in writing
- Need to start improving in maths

Key stage 2

- Need to sustain improvement in L4+ in English and maths
- Progress measure for English is excellent
- Progress measure in maths is satisfactory
- FSM gap is good and improving
- SEN gap much worse in 2008

Secondary attendance

- Unauthorised absence has worsened sharply over the last two years
- Persistent absentees - need to sustain improvement to hit targets, accelerate to close gap
- Rate of permanent exclusions remains high

Key stage 3

- SATs abolished but need to accelerate improvement in L5+ in English and maths

Key stage 4

- Need to accelerate improvement in 5+ A*-C GCSEs including English and maths
- Science performance is excellent
- FSM gap is good but worsening
- SEN gap continues to be excellent

Key stage 5

- Average point score (APS) per pupil and APS per entry are both very poor

Improved and sustained educational attendance and attainment

Priorities for improvement

Improvement objectives are as follows:

- Improve attendance focusing on unauthorised absence and persistent absentees
- KS1: Improve standards
- KS2: Sustain improvement and narrow SEN gap
- KS3/4: Accelerate improvement while maintaining FSM/SEN performance
- KS5: Improve standards

It is recognised that local and national improvement strategies are in place and impacting positively on outcomes and our focus is therefore on how partners can add value around the following priorities for improvement:

- Standards of attainment in primary schools
- GCSE results
- Attendance especially persistent absentees
- Support for vulnerable groups

N.B. Attendance and attainment of children looked after and children with disabilities are covered under priority outcome nine.

Delivery plans

Priority for improvement			
Standards of attainment in primary schools			
Outcome measures	Baseline	2009/10 target	2010/11 target
NI 73: Achievement at level 4 or above in both English and maths at Key Stage 2	70% (2008)	73% (2009)	75% (2010)
NI 93: Progression by 2 levels in English between Key Stage 1 and Key Stage 2	83% (2008)	85% (2009)	87% (2010)
NI 94: Progression by 2 levels in maths between Key Stage 1 and Key Stage 2	75% (2008)	81% (2009)	85% (2010)

Implementation strategies	Status
Primary National Strategy	Fully in place
Knowsley School Improvement Partnership Framework	Fully in place
High level actions	Lead agency
To disseminate Primary National Strategy key messages	Directorate of Children and Family Services / Schools
Continue to implement the CLLD programme	Directorate of Children and Family Services / Schools
Embed use of Primary National Strategy renewed Frameworks	Directorate of Children and Family Services / Schools
Roll out the one to one tuition programme	Directorate of Children and Family Services / Schools
LTP Narrowing The Gap programme	Directorate of Children and Family Services

Priority for improvement			
GCSE results			
Outcome measures	Baseline	2009/10 target	2010/11 target
NI 75: The percentage of pupils achieving 5 or more A*-C grades at GCSE or equivalent including English and maths	29.9% (2008)	36.2% (2009)	40% (2010)
NI 78: Number of schools where fewer than 30% achieve 5 or more A*-C grades at GCSE including English and maths	4 (2008)	3 (2009)	2 (2010)
Implementation strategies	Status		
Secondary National Strategy	Fully in place		
National Challenge	Fully in place		
Knowsley School Improvement Partnership Framework	Fully in place		
Future Schooling in Knowsley	Fully in place		
Firm Foundations	Fully in place		

High level actions	Lead agency
Disseminate Secondary National Strategy key messages	Directorate of Children and Family Services / Centres for Learning
Improve the overall quality of teaching through the implementation of the Pedagogical Framework	Directorate of Children and Family Services / Centres for Learning
Close the gap in attainment between the underperforming groups and that of other students	Directorate of Children and Family Services / Centres for Learning
Promote greater engagement of parents and families in children's learning	Directorate of Children and Family Services / Centres for Learning
Implement the transition programme into the Centres for Learning	Directorate of Children and Family Services / Centres for Learning
Continue to develop and implement targeted support through the Firm Foundation programme	Directorate of Children and Family Services / Centres for Learning
LTP Narrowing The Gap programme	Directorate of Children and Family Services

Priority for improvement			
Attendance especially persistent absentees			
Outcome measures	Baseline	2009/10 target	2010/11 target
NI 87: Secondary school persistent absence rate	8.65% (2008)	8.3% (2009)	6.3% (2010)
Implementation strategies	Status		
Primary and Secondary National Strategies	Fully in place		
School Attendance Service	Fully in place		
Firm Foundations	Fully in place		
National Challenge	Fully In place		
Healthy Schools Strategy	Fully in place		
Strategy for Inclusion	Fully in place		
Strategy for the use of wellbeing indicators	To be developed		
High level actions	Lead agency		
Provide focus and challenge regarding attendance through Primary and Secondary National Strategy key messages	Directorate of Children and Family Services / Schools		
Promote whole school programmes which promote positive attendance linked to attainment and emotional wellbeing	Directorate of Children and Family Services / Schools		
Implement attendance and attainment project with identified schools	Directorate of Children and Family Services / Schools		

Priority for improvement			
Support for vulnerable groups			
Outcome measures	Baseline	2009/10 target	2010/11 target
NI 102a: Achievement gap between pupils eligible for free school meals and their peers achieving the expected level at Key Stage 2	20% (2008)	16.5% (2009)	13% (2010)
NI 102b: Achievement gap between pupils eligible for free school meals and their peers achieving the expected level at Key Stage 4	22.9% (2008)	18.95% (2009)	15% (2010)
NI 104: Special Educational Needs (SEN)/non-SEN gap - achieving Key Stage 2 English and maths	51.4% (2008)	50.4% (2009)	48.4% (2010)
NI 105: Special Educational Needs (SEN)/non-SEN gap - achieving 5 A*-C GCSE inc. English and maths	30.3% (2008)	29.3% (2009)	28.3% (2010)
Implementation strategies	Status		
DCFS Strategy for Inclusion	Fully in Place		
High level actions	Lead agency		
Reduce the number of Statements of SEN in line with the National average	Directorate of Children and Family Services / Schools		
Promote early intervention and provide support to Children and Young People at risk of exclusion from education	Directorate of Children and Family Services / AIMs groups		
Develop the role of the special sector to extend outreach work for mainstream schools, as well as fostering learning opportunities between mainstream and special settings	Directorate of Children and Family Services / Special Schools / Schools		
Ensure that Children and Young People with 'High Level Need' experience a smooth process when they transfer between schools and when they enter adult life	Directorate of Children and Family Services / Schools		
LTP Narrowing The Gap programme	Directorate of Children and Family Services		

Current outcomes

Outcomes in this area are strongly linked to other areas of children's and young people's lives:

- Our Healthy Weight Strategy 'Energise Knowsley' is impacting on obesity levels amongst children and there is a need to continue to support the management of obesity - participation in sports and physical activity can support this need. (Being Healthy)
- There are many initiatives to support children and young people to stay safe and there is a need to continue to support this - participation in positive leisure and cultural activities, in safe environments, can support this need. (Stay Safe)
- On average, children and young people have relatively low achievement compared to the national average. We know too that alternative pathways have increased the numbers of young people gaining awards and there is a need to develop this opportunity further; participation in, and achievement through, leisure and cultural activities can improve confidence, self esteem, skills, communication and social and emotional development. (Enjoy and Achieve)
- We have exceeded national targets for young people getting involved in positive activities, which has had a positive impact on young people. This is an area that supports young people to

develop recognition and skills for life; participation in leisure and cultural activity can make a significant difference to young people making a positive contribution. (Positive Contribution)

- We know that the level of young people who are not in employment, education or training (NEET) is high in some areas of the borough and that there is a need for young people to access work experience, skills, volunteering and employment to enhance their ongoing employment chances; participation in opportunities through leisure and culture can create a pathway for continuous employment, education and training. (Economic Wellbeing)

Details of these outcomes are covered under the appropriate outcomes in this document.

We know that, in broadening access for children and young people, there needs to be a 'universal' offer as well as a more 'targeted' offer for different groups of children and young people (whether that be groups linked to pathways in their development or linked to specifically identified need).



High quality informal learning, cultural and sporting opportunities available for children and young people both inside and outside school

Priorities for improvement

- Increased and enhanced take up of leisure and cultural activities by all children inside and outside the school curriculum
- Increase of range of family learning activities available and increased number of families participating in these.
- Increased number of schools offering full range of extended schools activities (core offer)

Delivery plans

Priority for improvement			
Increased and enhanced take up of leisure and cultural activities by all children inside and outside the school curriculum			
Outcome measures	Baseline	2009/10 target	2010/11 target
NI 110: Young people's participation in positive activities	66.2% (2008/09)	70%	73.5%
NI 57: Children and young people's participation in high-quality PE and sport	77% (2007/08)	80%	82.5%
Implementation strategies	Status		
Knowsley Cultural Strategy - multi agency and partnership approach	Strategy currently being rewritten to underpin the Sustainable Communities Strategy		
Sports and Physical Activity Strategy and Action Plan - multi agency and partnership approach	Strategy in place		
Arts and Heritage Alliance Action Plan - multi agency and partnership approach	Plan in development		
Knowsley Youth Offer - multi agency and partnership approach	Plan in place		
High level actions	Lead agency		
Enhance, develop and deliver the 5 hour sporting offer (inside and outside school day) to include the development of robust monitoring and measurement of this and promotion of the free swim offer. As part of this produce an Active Leisure Plan to meet KPI targets of increasing the number of young people participating in sports and physical activity.	Sports and Physical Activity Alliance		
	Continued		

High level actions	Lead agency
<p>Provide opportunities for Sports and Cultural Leaders to gain NGB qualifications and for volunteers to gain placements within accredited clubs and organisations.</p> <p>Linked to this support clubs and groups to become accredited to enable pathways to achievement and increased participation, and also support the 3rd sector to provide greater opportunities for participation.</p>	Sports and Physical Activity Alliance
<p>Enhance, develop and deliver the 5 hour cultural offer (inside and outside school day) to include the development of robust monitoring and measurement of this.</p>	Arts and Heritage Alliance
<p>Linked to the development of a Cultural Strategy for Knowsley, pilot a Cultural Plan for children and young people in Halewood, with all stakeholder involvement. Evaluate and roll out across the borough if appropriate.</p>	Health and Wellbeing
<p>Communication:</p> <p>Raise awareness and promote opportunities already available with clear and appropriate lines for further detail.</p> <p>Explore the potential to develop the existing 'Active Card' (which is part of the MRM+2 system), to deliver the 'access card' principle for children and young people to access all leisure and cultural opportunities.</p> <p>Explore the potential for a role of 'life coaches / advisors' for families and through supporting children and young people, re-engage adults.</p>	Youth Offer Steering Group
<p>Maximise existing physical resources to create quality 'hubs' of activity through partnership working. Including leisure centres, centres for learning, OurPlace, etc.</p>	Directorate of Children and Family Services

Priority for improvement			
Increase of range of family learning activities available and increased number of families participating in these			
Outcome measures	Baseline	2009/10 target	2010/11 target
Number of parents/carers gaining accreditation or qualifications through family learning courses	260 (2008)	270	300
Implementation strategies	Status		
Family Support and Child Health Business Plan	In Place		
High level actions	Lead agency		
Plan and deliver a programme of family literacy/numeracy courses in partnership with schools and Knowsley Community College.	Directorate of Children and Family Services		
Plan and deliver a range of 'wider family learning' courses and activities in partnership with schools and voluntary sector organisations	Directorate of Children and Family Services		

Priority for improvement			
Increased number of schools offering full range of extended schools activities (core offer)			
Outcome measures	Baseline	2009/10 target	2010/11 target
NI 88: Percentage of schools providing access to extended services	74.3% (2008/09)	86%	100%
Implementation strategies	Status		
Family Support and Child Health Business Plan	In place		
High level actions	Lead agency		
Evaluation of the whole Extended Service programme	Directorate of Children and Family Services		
Increase the number of schools offering full range of extended service activities (Core Offer)	Directorate of Children and Family Services / schools		
Support schools and Centres for Learning with their new statutory responsibility of community cohesion through community access including adult learning	Directorate of Children and Family Services		
Identify gaps in Extended Service Core Offer delivery within clusters of schools	Directorate of Children and Family Services		
Establish ES support within Special Schools to develop inclusive extended service activities across the full range	Directorate of Children and Family Services		

Current outcomes

In 2008 59% of young people in Knowsley participated in positive activities, this is 3% lower than the national average. Nearly 40% of respondents of the Knowsley Residents' Survey stated that they were unhappy with the level of 'youth club' provision in their local community. Thirty young people aged between 16 and 25 are being recruited over two years on to voluntary placements in Knowsley as part of the V for Volunteering Talent Year programme.

The Youth Service contact rates in Knowsley exceed the targets and are increasing year on year. In 2008 59% of young people in Knowsley participated in positive activities, this is 3% lower than the national average.

Recorded outcomes for the Youth Service have increased 58.84% at the end of the year 2006/07 to 76.88% at the end of the year 2007/08. Accredited outcomes exceeded national benchmarks and will increase again in line with the LAA target around accreditation. Both these indicators tell that young people contacted by the youth service, stay in contact for longer and achieve a variety of accreditation through their engagement.

First time entrants remain a key issue for the Partnership with the majority being young males. Although recently recalculated figures suggest that we compare well with similar areas, numbers have risen for the last two years and evidence from the community shows that youth crime is a priority issue in a number of areas of the borough.

There are key geographical locations where FTE is an issue. There is a significant percentage of FTEs who have been arrested for violent offences, mainly possession of an offensive weapon.

40% of respondents to the Tellus3 Survey said they feel 'quite safe' from being hurt by other people around their local area, whereas the national average was 48%.

Services are inclusive and capture the needs of vulnerable groups. The Engagement and Participation Team work with various groups (Looked After Children, LDD and gay and lesbian). The Youth Service contact with at risk and hard to reach young people is achieved through detached youth work. The use of the mobile facility through street based teams and the YCAP priorities will enable us to increase our activity with this group. The target to reach for young people through street based teams for 2009/10 is 720 young people who are perceived as causing anti social behaviour.

Children and young people are positively engaged and contributing in their communities



Priorities for improvement

Our focus in the period up to 2011 will be on:

- Young people able to access a range of development opportunities, advice and guidance and positive leisure activities
- Effective engagement of children and young people in the design, delivery and evaluation of services
- Reduce the number of first time entrants to the Youth Justice System

Delivery plans

Priority for improvement			
Young people able to access a range of development opportunities, advice and guidance and positive leisure activities			
Outcome measures	Baseline	2009/10 target	2010/11 target
NI 110: Young people's participation in positive activities	66.2% (2008/09)	70%	73.5%
Number of young people achieving accredited outcomes through youth work	724 (2007/08)	918	n/a
Number of young people achieving the Mayor's Award	518 (2007/08)	668	n/a
Implementation strategies	Status		
Integrated Youth Support Strategy	In place		

High level actions	Lead agency
Implementation of Integrated Youth Support Strategy	Directorate of Children and Family Services
Coordinate delivery of activities across services and directorates and improve marketing of activities	Directorate of Children and Family Services
Engage voluntary, community, faith and private sector organisations in delivery of activities for children and young people and coordinate publicity in line with local youth offer	Directorate of Children and Family Services
Map existing resources targeted and universal and identify opportunities to complement positive activities through commissioning process	Directorate of Children and Family Services

Priority for improvement			
Effective engagement of children and young people in the design, delivery and evaluation of services			
Outcome measures	Baseline	2009/10 target	2010/11 target
Participation Standards Quality Marks awarded	0 (2008/09)	50	50
Implementation strategies	Status		
Children and Young People's Engagement and Participation Strategy	Being Developed (October 09)		
High level actions	Lead agency		
Achievement of Participation Standards Quality Mark	Directorate of Children and Family Services		
Expansion of the Young Advisors Programme	Directorate of Children and Family Services		
Implementation of Young Inspectors Programme	Directorate of Children and Family Services		

Priority for improvement			
Reduce the number of first time entrants to the Youth Justice System			
Outcome measures	Baseline	2009/10 target	2010/11 target
NI 111: Number of first time entrants to the Youth Justice System per 100,000 people aged 10-17	2,070 (2007/08)	2,007	1,945
Implementation strategies	Status		
Youth Justice Capacity and Capability Plan	In place		
Youth Crime Prevention Strategy	Being developed		
High level actions	Lead agency		
Integrated governance and alignment of youth crime prevention activities	Directorate of Children and Family Services		
Implementation of Youth Crime Action Plan interventions	Directorate of Children and Family Services		
Early identification and tailored support for individual children and young people with relevant risk factors	Directorate of Children and Family Services		

Current outcomes

Within Merseyside, Knowsley has the second highest rate of child poverty at 58%, against a national rate of 40%.

Children living in workless, lone parent households have a 56% risk of living in poverty. Within Knowsley, there are twice as many lone parents (4.5%) compared to the national average (2.2%). Lone parents are mainly concentrated in North Huyton (7.4%), South Kirkby (5.9%) and North Kirkby (5.7%).

The proportion of young people who are not in employment, education or training (NEET) has reduced from 15.6% in 2001 to 12.45% in 2008. However with a target figure of 10.1% by 2010 there is still much to be achieved. (GMCP figs).(SOURCE: Greater Merseyside Connexions, March 2009).

North Kirkby (16.8%) and North Huyton (14.2) have the most significant proportions of the 16-18 year old population NEET. The lowest proportions of people in learning between the ages of 16 and 18 are in North Kirkby (73.4%), South Kirkby (75.1%) and North Huyton (76.2%). Halewood has the lowest percentage of 16-18 year olds NEET (5.1%) and the highest percentage in learning (84.6%).

This reinforces the notion that there is a big difference in the percentage of 16-18 year olds NEET spatially in Knowsley. (GMCP Figs)

Within the NEET cohort of young people Knowsley has a high number of young people with learning difficulties or disability (LDD) and recognise the importance of developing 'progression pathways' as a key challenge to improving outcomes for this group. Other key 'vulnerable' groups being targeted with additional support are teenage mothers, care leavers and young people supervised by the Youth offending Service.

Priorities for improvement

Our focus in the period 2009/11 will be on:

- More young people in education, employment or training
- More young people with good qualifications
- Reduce child poverty and increase employment rate



Young people, by the age of 19, achieve economic wellbeing through choice

Delivery plans

Priority for improvement			
More young people in education, employment or training			
Outcome measures	Baseline	2009/10 target	2010/11 target
Percentage of 16 -18 year olds not in education, employment and training (LAA targets calculated using Connexions methodology)	14.5% (2007/08)	10.1%	10%
Implementation strategies	Status		
Integrated Youth Support Strategy	In place		
NEET Strategy	In place		
14-19 Strategy	In place		
High level actions	Lead agency		
Development of a package of NEET programmes and services addressing prevention, intervention and sustainability	NEET Strategy Group		
Knowsley's Young Apprenticeship Programme	Directorate of Regeneration, Economy and Skills		
Activity Agreement Programme - targeting vulnerable young people and supporting their progression into EET	Connexions		
Area Partnerships' development of 'local' understanding of NEET and development of action plans to achieve NEET reduction	Directorate of Neighbourhood Services		
Improve retention on ESF funded courses	Knowsley Community College		
Sub-Regional Procurement of Connexions Service	Directorate of Children and Family Services		

Priority for improvement			
More young people with good qualifications			
Outcome measures	Baseline	2009/10 target	2010/11 target
NI 80: Achievement of a Level 3 qualification by the age of 19	28% (2007/08)	34%	36%
NI 82: Inequality gap in the achievement of a Level 2 qualification by the age of 19	52.68% (2007/08)	58.68%	64.68%
Implementation strategies	Status		
14-19 Strategy	In place		
NEET Strategy	In place		
High level actions	Lead agency		
Establish Data and Action group	Directorate of Children and Family Services		
Targeted work on Year 12 and 13 retention and progression	Knowsley Community College		
Analysis of current performance on Knowsley 16-18 year olds in all FE/WBL providers	Learning and Skills Council		
Establish Knowsley 14-19 entitlement/Compact for learning and progression routes	Directorate of Children and Family Services		

Priority for improvement			
Reduce child poverty and increase employment rate			
Outcome measures	Baseline	2009/10 target	2010/11 target
NI 116: Proportion of children in poverty	34.3% April 2007	31%	29%
NI 151: Overall employment rate	65.7% 2007/08	70%	71%
Implementation strategies	Status		
Family Policy	Being developed		
Child Poverty Reduction Strategy	Being developed		
High level actions	Lead agency		
Establish child poverty programme and strategic level programme board	Directorate of Children and Family Services		
Reduce number of children in households receiving worklessness benefits	Directorate of Children and Family Services		
Develop measure of children living in poverty in working households	Directorate of Children and Family Services		
Develop localised set of impact measures	Directorate of Children and Family Services		

Improved outcomes for children with disabilities

Current Outcomes:

- Children with disabilities are subject to the same health inequality issues and health needs as other children in Knowsley. This means that obesity, the need to exercise and eat healthy food, dental health and immunisations are key issues
- Emotional health and wellbeing needs are not always identified at an early stage but specialist services are available
- Children with disabilities are particularly vulnerable to abuse and bullying and their safeguarding needs are important
- In 2008 873 children in Knowsley had disabilities or learning disabilities that led to a statement of Special Educational Needs. This is 2.23% of the 0-19 population (compared to 1.98% nationally)
- 232 children in Knowsley have been diagnosed with autistic spectrum disorders with a further 59 undergoing diagnosis. We know that whilst our assessment and diagnostic pathway is robust for these children, our support and service provision does not always meet their needs (and those of their families) well
- In 2008 210 children and their families were receiving support from children's social care

Young people tell us:

- They want more access to leisure and social activities and to be able to do the things that all children and young people are able to do
- They should be involved in shaping services

Parents tell us:

- That they and their families need more varied and flexible short breaks provision and support
- That the transition to adulthood does not always go smoothly and they have concerns for their children's future
- Services are not joined up
- Parents know what is needed for their child
- Parents want local provision, reducing travelling distance to services/activities
- Emotional and wellbeing support needed for parents, including alternative therapies
- Want to be involved in developing services, in a range of ways
- More whole family fun events

Improved overall outcomes for the most vulnerable children and young people: children with disabilities and children looked after

Priorities for improvement

- Significantly increased provision of short breaks based on local population needs assessment and in line with what disabled children and families want
- Improved transition process to adulthood and adult services
- Significantly increased access to universal services including measures specific to severely disabled children
- Pilot and then implement Early Support - a process for making sure services for disabled children under 5 and their families are joined up.

Improved outcomes for children looked after

Current outcomes:

Spending time in care as a child is one of the most powerful indicators of social exclusion. Considerable improvements have been made this year to ensure that children in care in Knowsley have the best possible experience, including the multi agency Corporate Parenting Strategy that underpins our improving outcomes for children looked after, the launch of the Children in Care Pledge and the establishment of MADE (Making a Difference Everywhere) to ensure that looked after children and young people's voices in decision making are heard effectively.

Improvements include:

- More children and young people looked after have health check ups than the national average
- More children have stable placements
- Higher than the national average number of care leavers in suitable accommodation
- Good attendance at school
- Significant improvement in the number of young people looked after leaving school with good GCSEs, which is significantly better than the national picture
- Knowsley has more care leavers in education, employment or training than the national picture



Priorities for improvement

- Improvements in the quality and choice of placements
- Embedding improvements and continuing to improve educational achievements at all stages
- Reducing the numbers of looked after children through improved care planning and more effective preventative services

Delivery plans

Priority for improvement			
Improved outcomes for disabled children			
Outcome measures	Baseline	2009/10 target	2010/11 target
Number of residential overnight stays including fostering and care in own home	3,143	3,457	3,803
Numbers of disabled children accessing universal provision through Bridging Worker project		100	200
Improved parental satisfaction with services (NI54)	Baseline to be established in 2009/10		
All children aged 14-19 with SEN who have learning disabilities needing transition to adult services have person centred reviews by 2012	4.5%	10%	50%
Implementation strategies	Status		
Aiming High for Disabled Children Implementation Plan	In place		
Transition Strategy	In place, to be refreshed/reviewed throughout 2009		
High level actions	Lead agency		
Enable/support access to universal provision	Directorate of Children and Family Services		
Demonstration of high priority given to disabled children and families, including signing of Charters	Directorate of Children and Family Services / NHS Knowsley		
Communication of increases in short break provision/development of programme to disabled children and families	Directorate of Children and Family Services		
Implementation of person centred reviews for all children 14-19 with SEN who have learning disabilities needing transition to adult services	Directorate of Children and Family Services		

Priority for improvement			
Improved outcomes for children looked after			
Outcome measures	Baseline	2009/10 target	2010/11 target
NI 99: Children in care reaching level 4 in English at Key Stage 2	43% (2008)	31% (2009)	57% (2010)
NI 100: Children in care reaching level 4 in Maths at Key Stage 2	50% (2008)	35% (2009)	64% (2010)
NI 101 Children in care achieving 5 A*-C GCSEs (or equivalent) at Key Stage 4 (including English and Maths)	34.1% (Q4 2008/9)	40%	50%
Percentage of children's homes rated good or outstanding	Overall effectiveness: 40% Staying safe: 60% Make a positive contribution: 0% (Q3 2009/10)	Improved grades	Further improvement
Inspection ratings for the council's fostering agency	Overall effectiveness: Good Being healthy: Good Staying safe: Satisfactory		

Priority for improvement			
Improved outcomes for children looked after			
Outcome measures	Baseline	2009/10 target	2010/11 target
	Enjoying and achieving: Good Making a positive contribution: Satisfactory Achieving economic wellbeing: Good (Nov 2007)		
Implementation strategies	Status		
Children Looked After (CLA) Strategy	In place		
High level actions	Lead agency		
Improvements in the quality and choice of placements	Directorate of Children and Family Services		
Improved care planning and more effective preventative services	Directorate of Children and Family Services		
Embedding improvements and continuing to improve educational achievements at all stages	Directorate of Children and Family Services		
Prioritise services for children looked after for accreditation to the Participation Standards Quality Mark	Directorate of Children and Family Services		
Improve quantity and quality of foster carers	Directorate of Children and Family Services		

You can also get this information in other formats.
Please phone Customer Services on 0151 443 4031,
or email customerservices@knowsley.gov.uk

Designed by Knowsley Communications Copyright © 2009 Metropolitan Borough of Knowsley